

PLAT OF PEPELKA COMMERCE CENTER SUBDIVISION, SECOND FILING

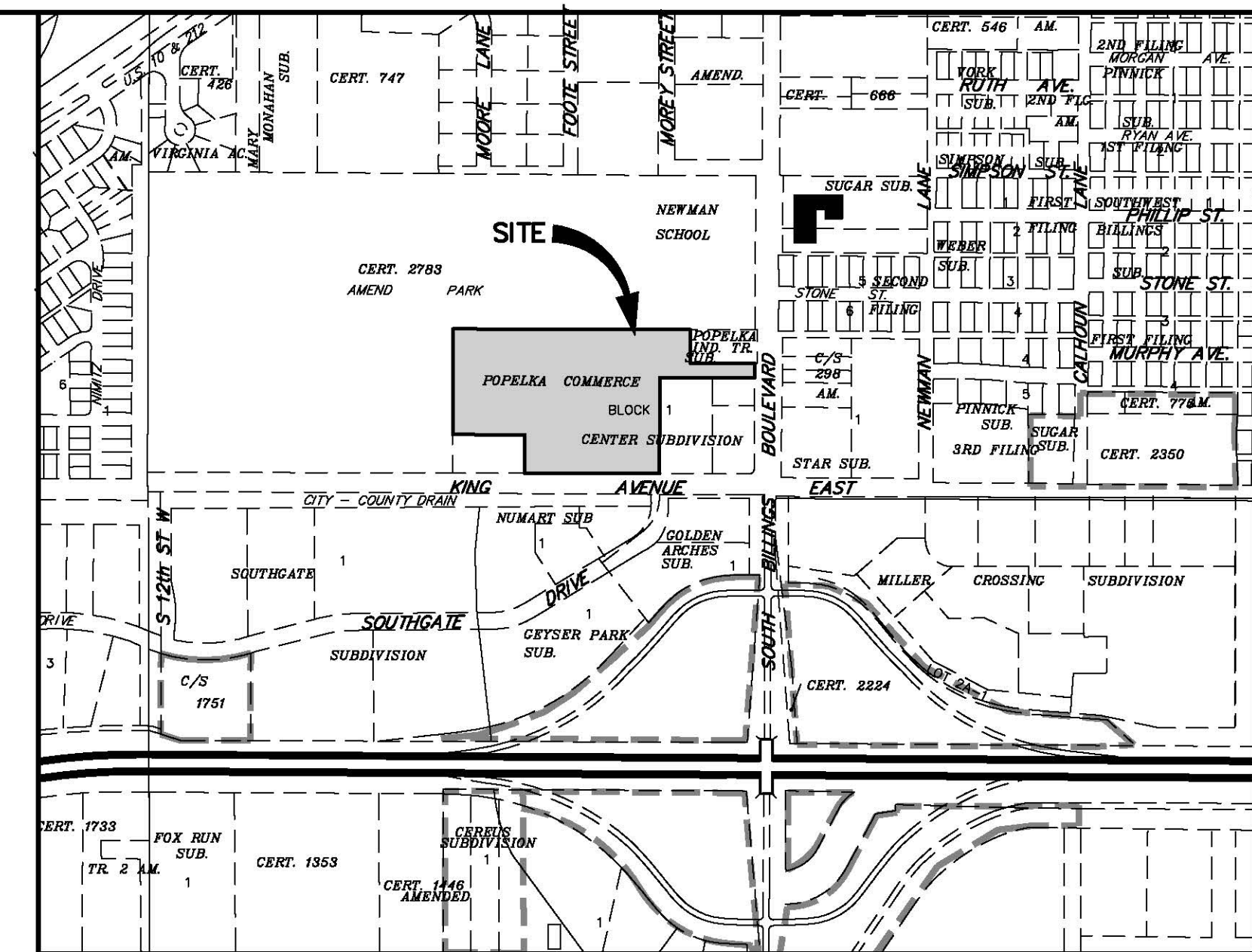
BEING LOT 3A, BLOCK 1, OF AMENDED PLAT OF LOTS 3 AND 4, BLOCK 1, POPELKA COMMERCE CENTER SUBDIVISION,
SITUATED IN THE SE1/4 OF SECTION 8, T. 1 S., R. 26 E., P.M.M.,
IN THE CITY OF BILLINGS, YELLOWSTONE COUNTY, MONTANA

PREPARED FOR : POPELKA ENTERPRISES, LLC.

JUNE, 2014

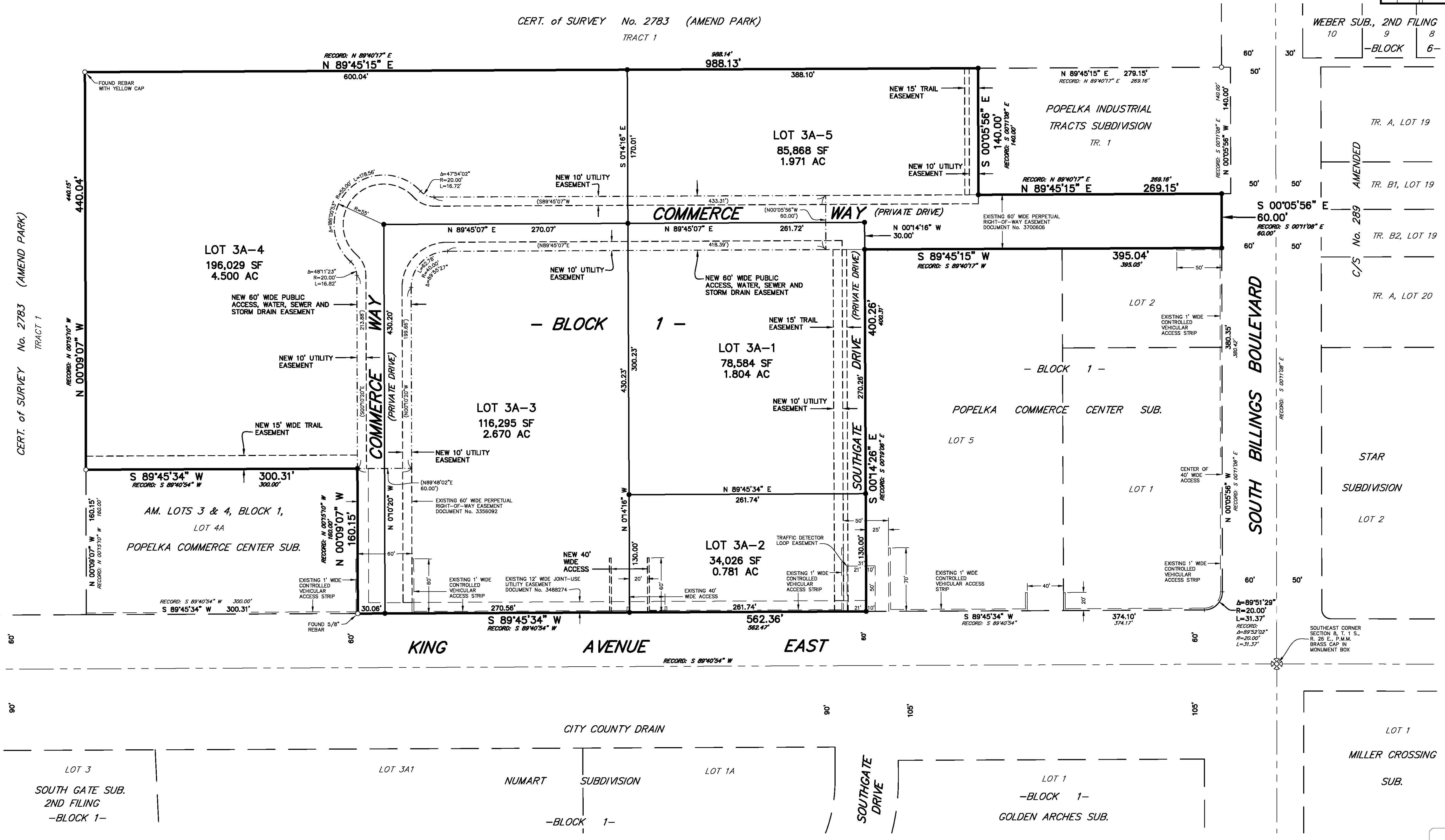
PREPARED BY : SANDERSON STEWART 

BILLINGS, MONTANA



VICINITY MAP
NOT TO SCALE

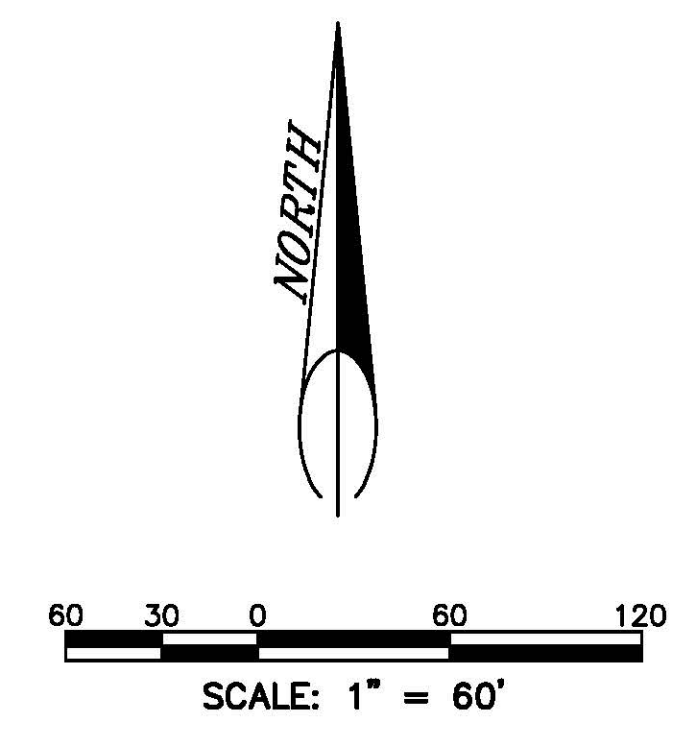
CERT. of SURVEY No. 2783 (AMEND PARK)
TRACT 1



THE BASIS OF BEARINGS FOR THIS SURVEY HAS BEEN DERIVED FROM GPS OBSERVATIONS AND IS BASED ON A NAD 83, LAMBERT CONFORMAL CONIC, SINGLE PARALLEL, LOW DISTORTION PROJECTION FOR THE CITY OF BILLINGS, HAVING A POINT OF ORIGIN AT 45°47'00" N LATITUDE AND 108°25'00" W LONGITUDE WITH A SCALE FACTOR OF 1.0001515. DISTANCES ARE GRID, INTERNATIONAL FEET, GRID TO GROUND COMBINED FACTOR IS 1.0000031. THE CONVERGENCE ANGLE AT THE SOUTHEAST CORNER OF SECTION 8 = -0°05'07"

- FOUND SURVEY MONUMENT, REBAR WITH YELLOW CAP MARKED "ENGINEERING INC 9960LS", OR AS NOTED
- SET 5/8" X 18" REBAR WITH CAP MARKED WITH THE LICENSE NUMBER OF THE UNDERSIGNED LAND SURVEYOR AND "SANDERSON STEWART"

NOTE: ALL CURVES ARE TANGENT AND ALL PROPERTY LINES INTERSECTING CURVES ARE RADIAL UNLESS OTHERWISE NOTED.



RESERVED FOR CLERK AND RECORDER

P:\PROJ... MANAGEMENT\75028..._PLAT..._COMMERC..._CENTER..._SUB..._BLOCK..._1..._SHEET..._2..._OF..._2..._DWG