

PRELIMINARY AMENDED PLAT OF LOT 1C-2, BLOCK 1,
CIRCLE FIFTY SUBDIVISION

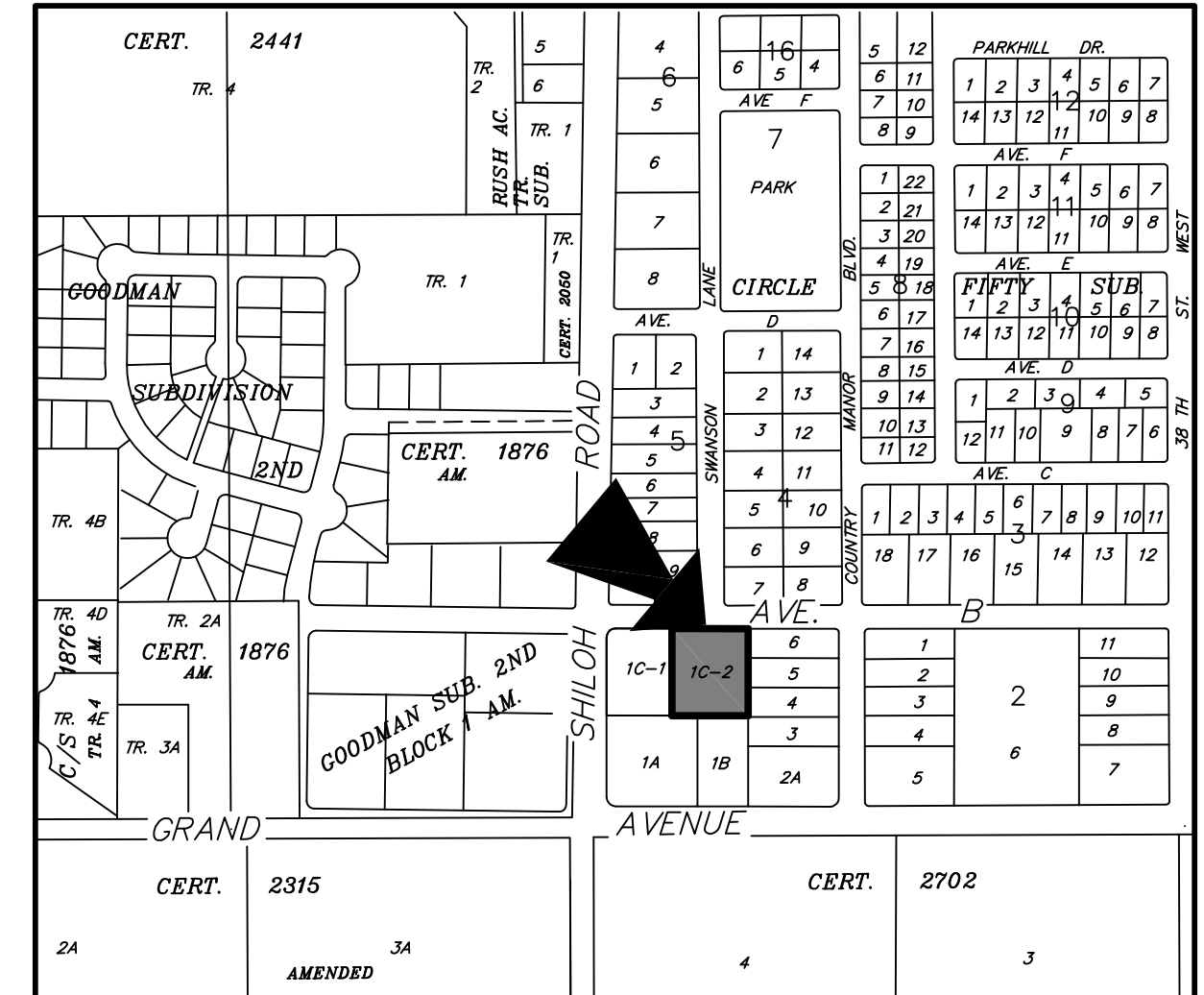
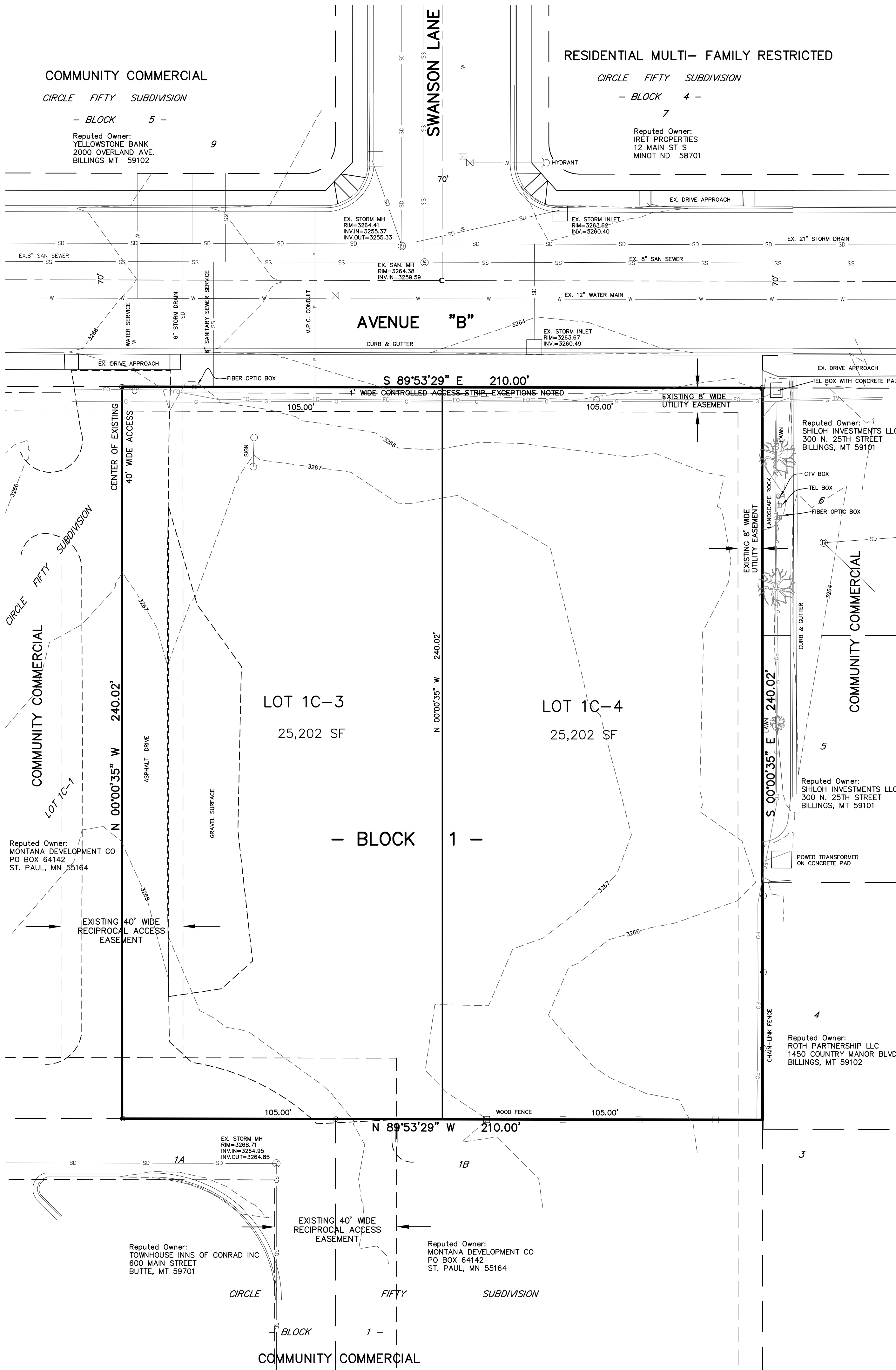
SITUATED IN THE SE1/4 OF SECTION 33, T. 1 N., R. 25 E., P.M.M.
 IN THE CITY OF BILLINGS, YELLOWSTONE COUNTY, MONTANA

PREPARED FOR : ROBERT SUKIN

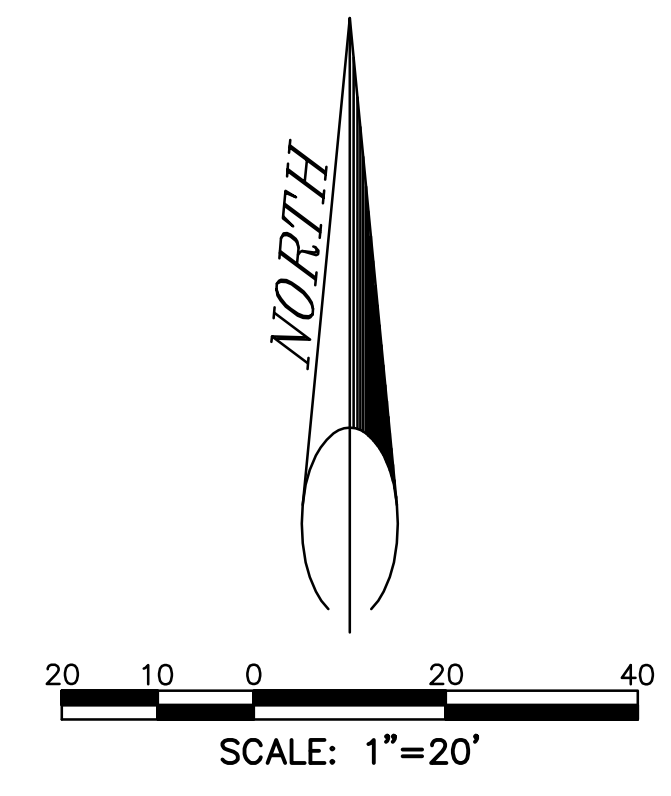
AUGUST 2014

PREPARED BY : SANDERSON STEWART

BILLINGS, MONTANA



VICINITY MAP
 NOT TO SCALE



- SS— SANITARY SEWER LINE
- W— WATER LINE
- SD— STORM DRAIN LINE
- G— GAS LINE
- P— POWER LINE
- FO— FIBER OPTIC LINE
- TV— CABLE TELEVISION

PLAT DATA

GROSS AREA	= 50,404 Sq Ft
NET AREA	= 50,404 Sq Ft
NUMBER OF LOTS	= 2
MINIMUM LOT SIZE	= 25,202 Sq Ft
MAXIMUM LOT SIZE	= 25,202 Sq Ft
LINEAL FEET OF STREETS	= 0
PARKLAND REQUIREMENT	= NONE
EXISTING ZONING	= COMMUNITY COMMERCIAL (CC)
SURROUNDING ZONING:	
NORTH	= CC & RMF-R
SOUTH	= CC
EAST	= CC
WEST	= CC
EXISTING LAND USE	= VACANT
PROPOSED LAND USE	= COMMERCIAL DEVELOPMENT
TAX CODE	= A30024