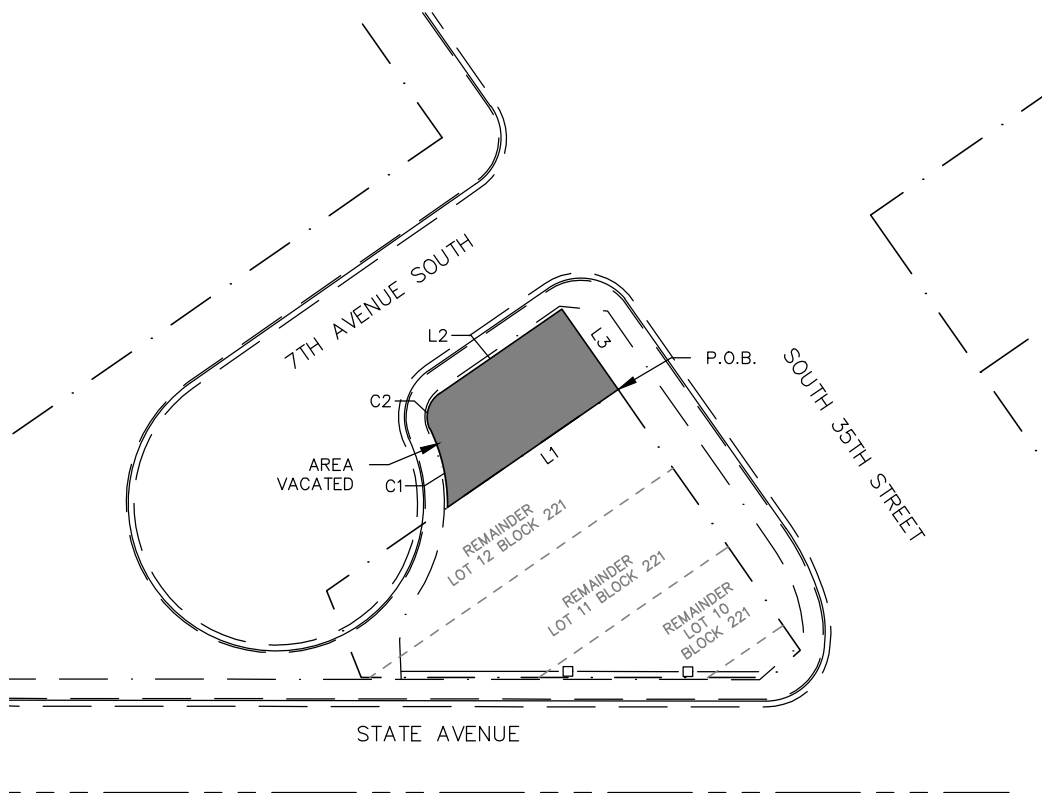
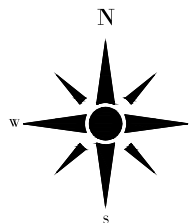


EXHIBIT "A"



Line #	DIRECTION	LENGTH
L1	S55° 23' 30"W	54.06
L2	N55° 23' 30"E	38.68
L3	S34° 57' 43"E	25.50



CURVE #	LENGTH	RADIUS	DELTA	CHORD DIRECTION	CHORD LENGTH
C1	21.14	45.00	26°55'18"	N12°35'14"W	20.95
C2	10.35	7.50	79°05'04"	N15°50'58"E	9.55