

**PRELIMINARY PLAT OF
AMENDED PLAT OF LOT 6, BLOCK 3
OF BURLINGTON NORTHERN
SUBDIVISION 19TH FILING**

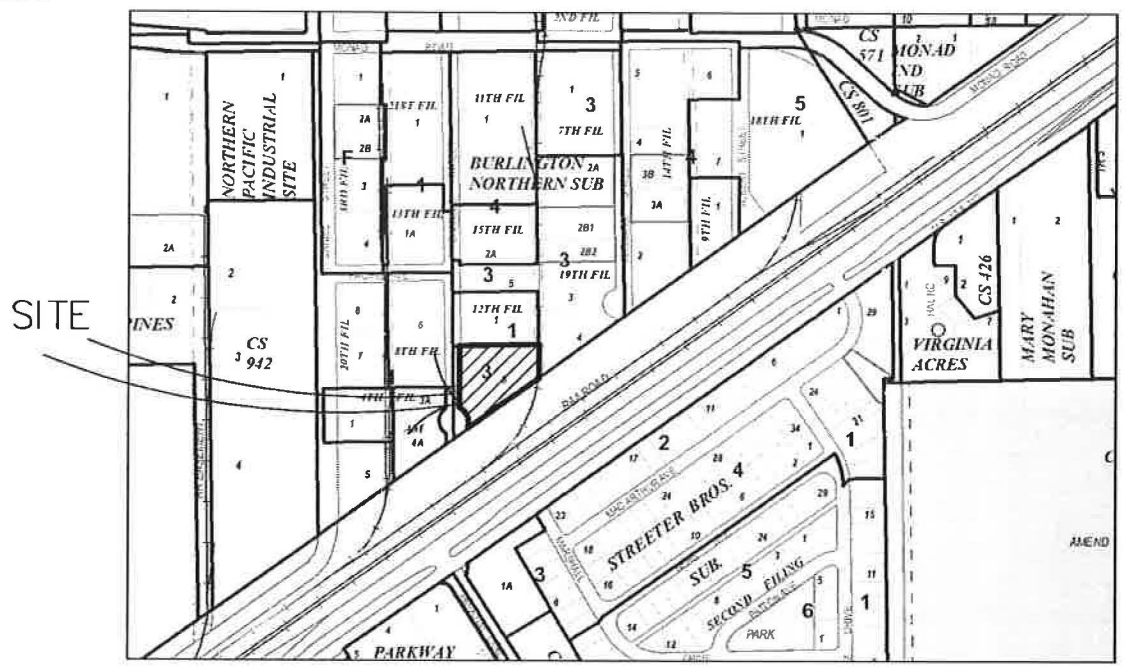
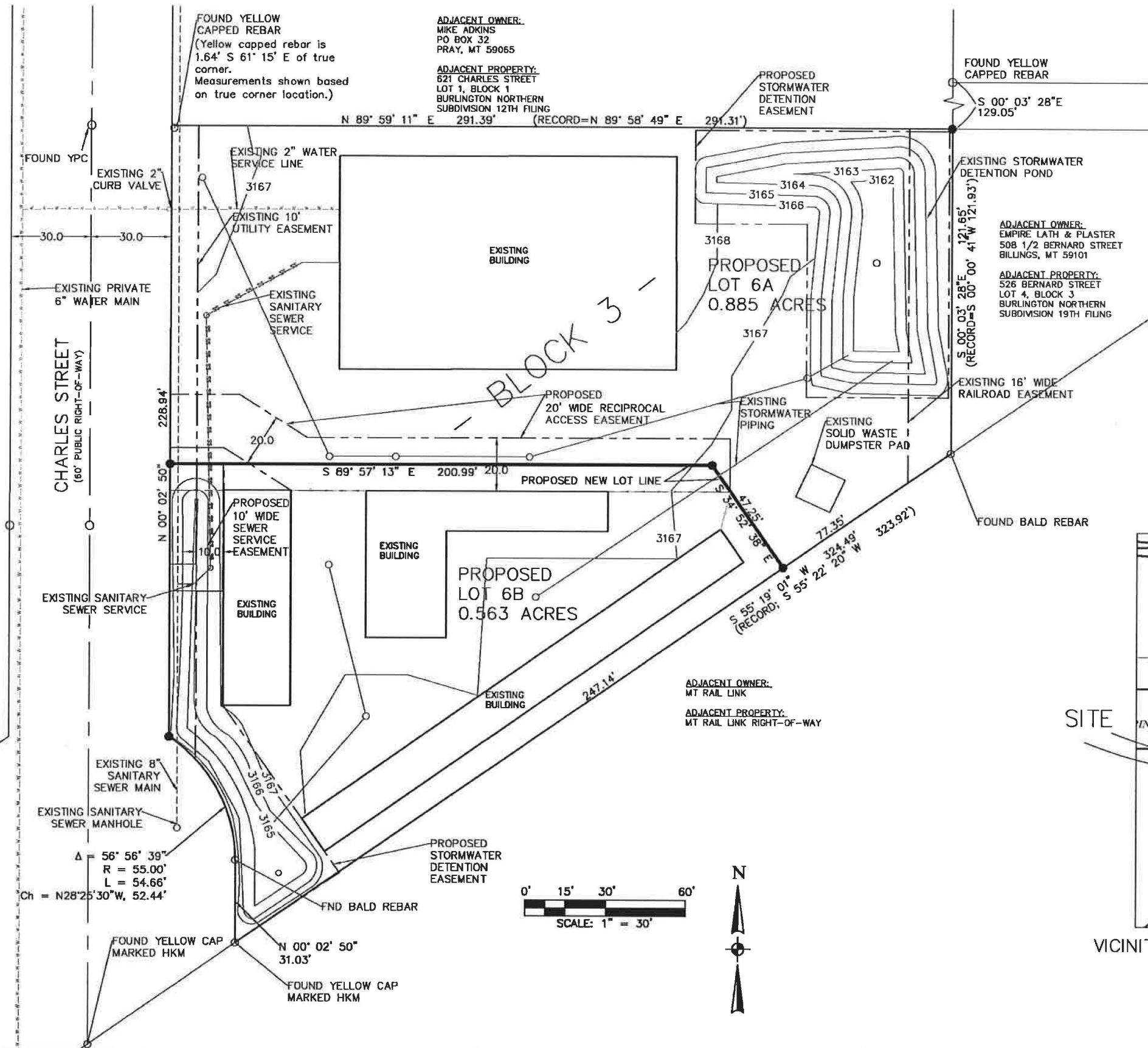
LOCATED IN THE SOUTHWEST 1/4 SECTION 08, TOWNSHIP 1 SOUTH, RANGE
26 EAST, P.M.M. YELLOWSTONE COUNTY, STATE OF MONTANA
OCTOBER, 2014

SURVEYED FOR: EMPIRE LATH & PLASTER, INC.

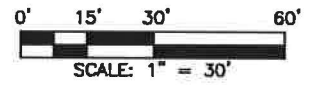
SURVEYED BY: EGGART ENGINEERING COMPANY

SUBDIVISION DETAILS:

GROSS AREA: 1.448 ACRES
 NET AREA: 1.448 ACRES
 ROAD AREA: 0.00 ACRES
 NUMBER OF LOTS: 2
 MAXIMUM LOT SIZE: 0.885 ACRES
 MINIMUM LOT SIZE: 0.563 ACRES
 PARK DEDICATION: 0.00 ACRES
 EXISTING LAND USE: CONTROLLED INDUSTRIAL
 PROPOSED LAND USE: CONTROLLED INDUSTRIAL
 ZONING: CONTROLLED INDUSTRIAL



VICINITY MAP: NOT TO SCALE



CLERK AND RECORDER FILING INFORMATION