

PRELIMINARY PLAT OF LENHARDT SQUARE SUBDIVISION, THIRD FILING

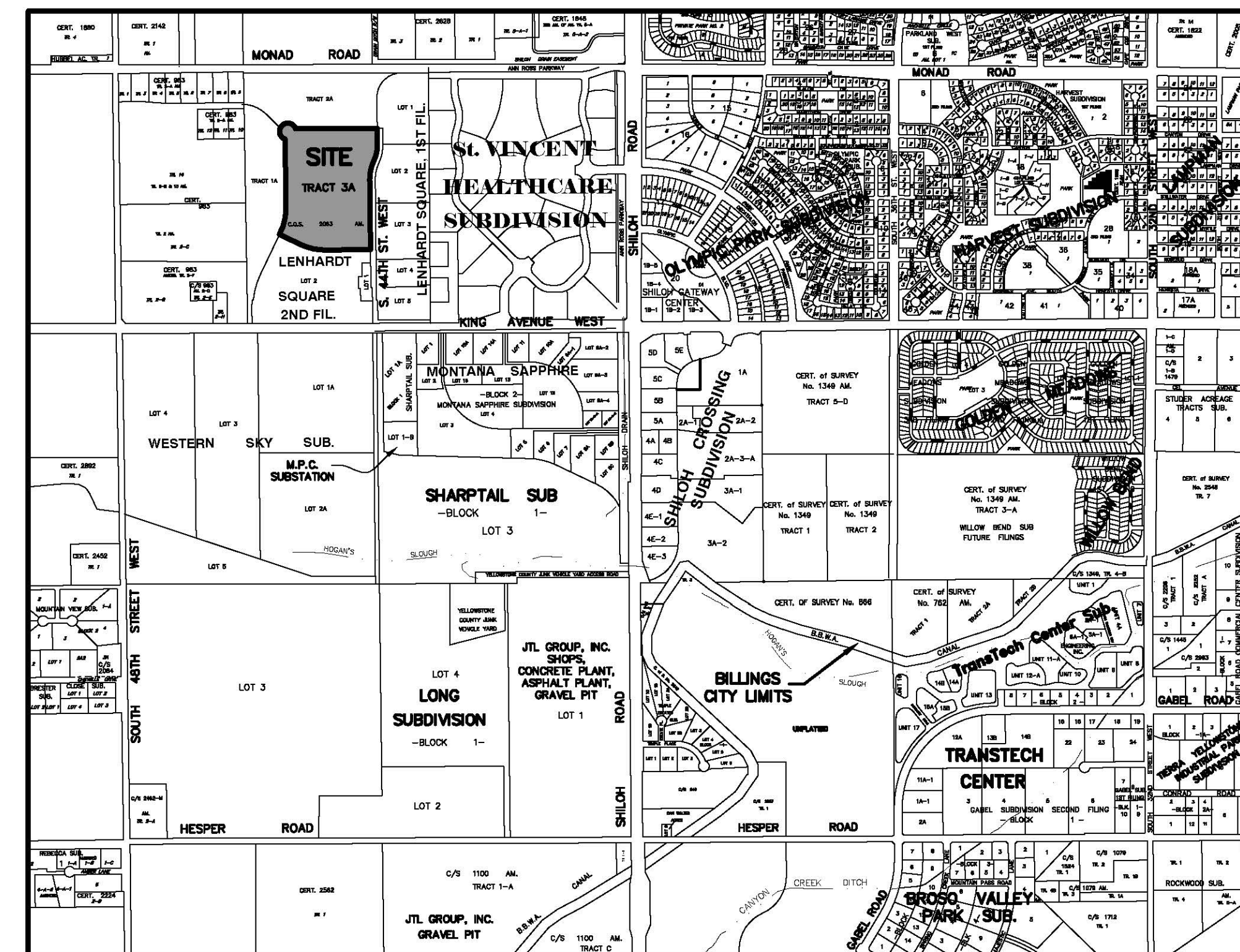
BEING TRACT 3A, CERTIFICATE OF SURVEY No. 2063, AMENDED
SITUATED IN THE SE1/4 AND SW1/4 OF SECTION 10, T. 1 S., R. 25 E., P.M.M.
YELLOWSTONE COUNTY, MONTANA

PREPARED FOR : STOCK DEVELOPMENT

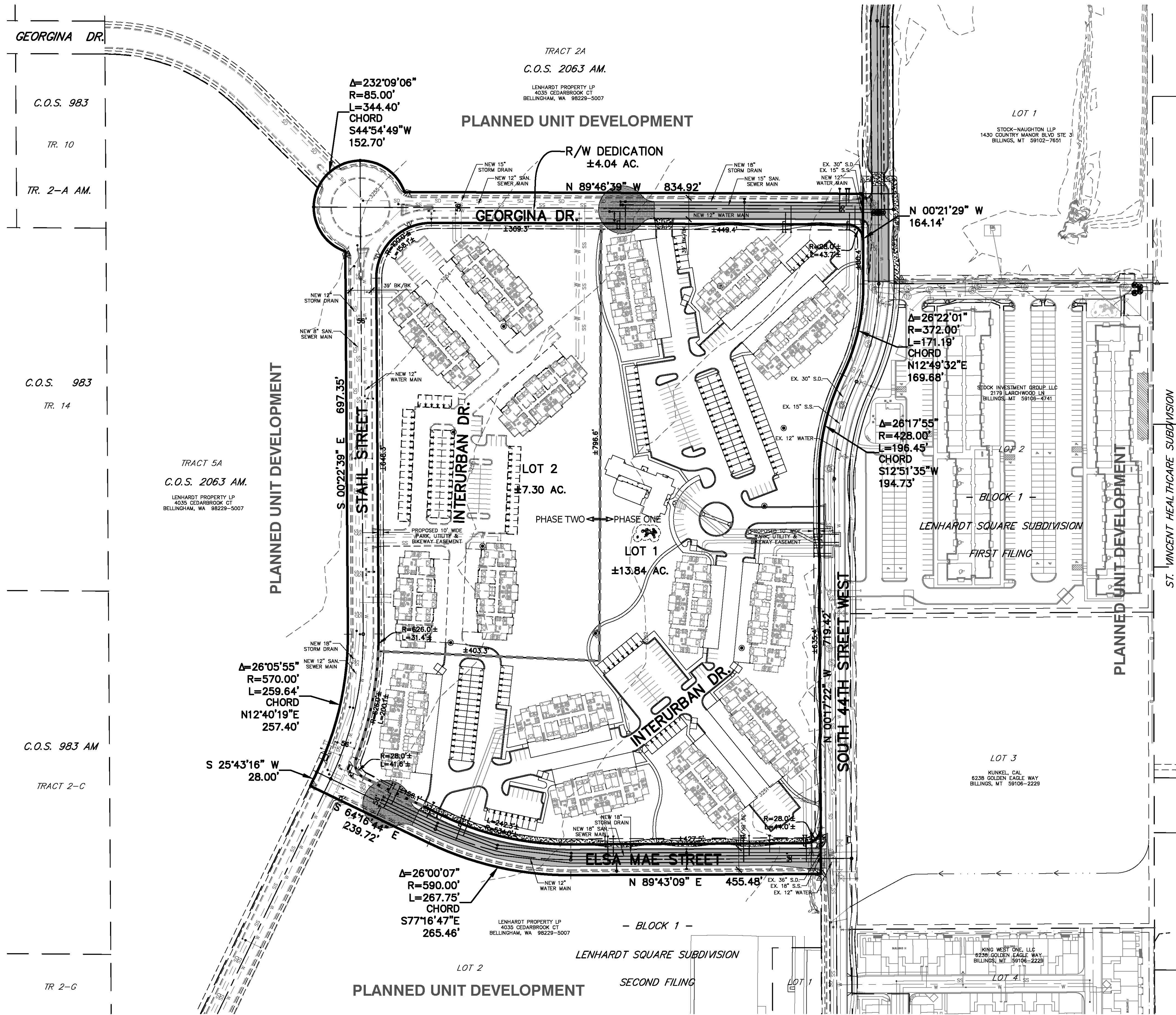
DECEMBER, 2014

PREPARED BY : SANDERSON STEWART

BILLINGS, MONTANA



VICINITY MAP
NORTH
N.T.S.



PLAT DATA

GROSS AREA	= 25,186 AC.
NET AREA	= ±21.14 AC.
NUMBER OF LOTS	= 2
MINIMUM LOT SIZE	= ±13.84 AC.
MAXIMUM LOT SIZE	= ±7.30 AC.
LINEAL FEET OF STREETS	= ±2,944 L.F.
PARKLAND REQUIREMENT	=
PARKLAND DEDICATION	=
EXISTING ZONING	= PLANNED UNIT DEVELOPMENT
SURROUNDING ZONING:	
NORTH	= PLANNED UNIT DEVELOPMENT
SOUTH	= PLANNED UNIT DEVELOPMENT
EAST	= PLANNED UNIT DEVELOPMENT
WEST	= PLANNED UNIT DEVELOPMENT
EXISTING LAND USE	= VACANT
PROPOSED LAND USE	= RESIDENTIAL MULTI-FAMILY

