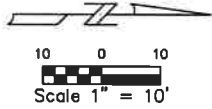


PLAN OF LEE MANUFACTURED HOME PARK SUBDIVISION,

Being The E 1/2 of Lot 6, Block 2, Superior Homes Subdivision
Sited in the SE1/4 of Section 15, T1N, R26E, PMM.
City of Billings, Yellowstone County, Montana



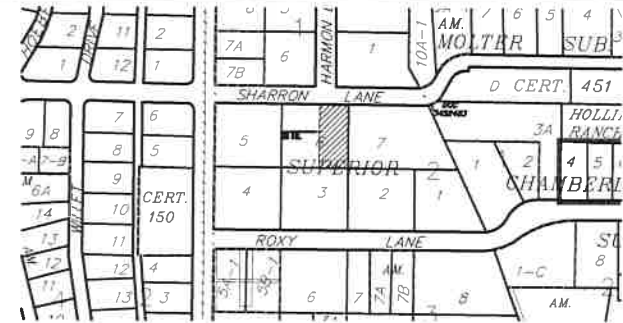
PREPARED FOR: HAN B LEE

ENGINEER: BLUELINE ENGINEERING LLC
MARCH, 2015
BILLINGS, MONTANA

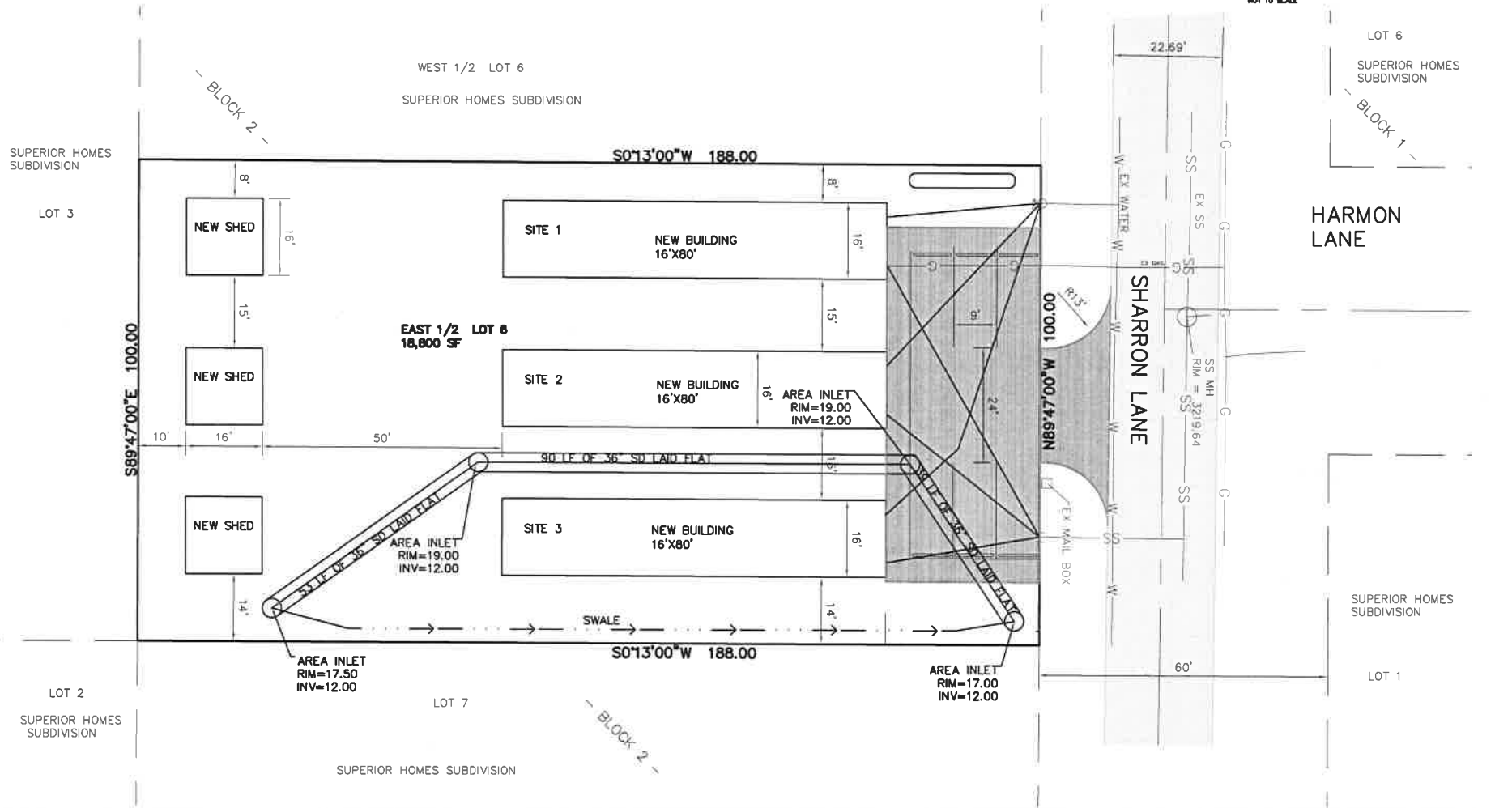
MANUFACTURED HOME SITE DETAILS:

GROSS AREA	0.431 ACRES
NET AREA	0.431 ACRES
ROAD AREA	0.00 ACRES
NUMBER OF HOME SITES	3

BASIS OF BEARING: SUPERIOR HOMES SUBDIVISION



VICINITY MAP
NOT TO SCALE



2110 OVERLAND AVE
SUITE 109
BILLINGS, MT 59102
PHONE (406) 252-294
FAX (406) 254-2295

blueline
ENGINEERING

REVISIONS	
NO.	DATE
1	1/28/15
2	3/9/15
3	3/23/15

JOB: 14083
DATE: 1/28/15
DRAWN BY: CAO
CHECKED BY: MJP
SCALE: 1"=10'
DRAWING: SITE/PLDNG

E 1/2 LOT 6, BLOCK 2, SUPERIOR HOMES
SUBDIVISION
PLAN

~SHEET~
1/1