

PLAT OF JOSEPHINE CROSSING SUBDIVISION, FIFTH FILING

BEING LOT 33A OF AMENDED PLAT OF LOT 33, BLOCK 1, JOSEPHINE CROSSING SUBDIVISION, THIRD FILING
SITUATED IN THE NW1/4 OF SECTION 20, T. 1 S., R. 26 E., P.M.M.,
IN THE CITY OF BILLINGS. YELLOWSTONE COUNTY, MONTANA

PREPARED FOR : McCALL DEVELOPMENT, INC.

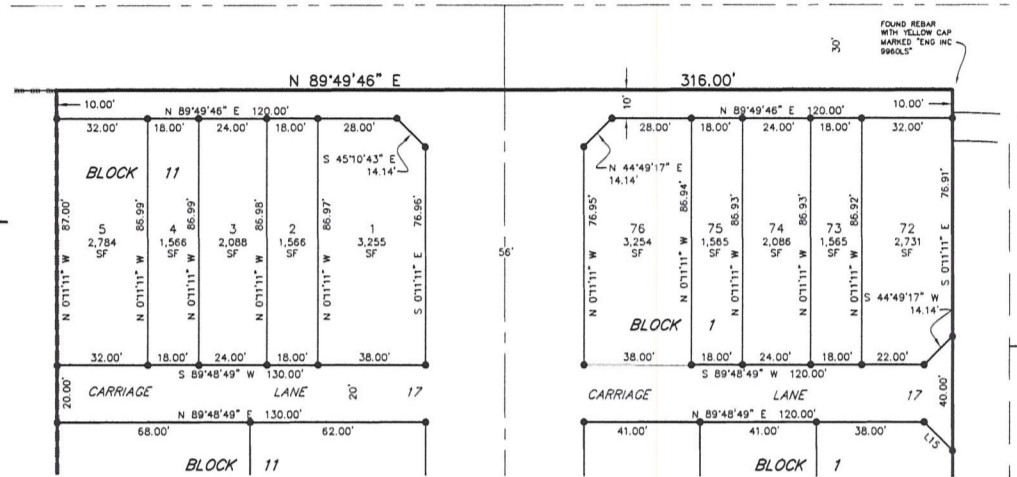
AUGUST, 2014

PREPARED BY : SANDERSON STEWART

BILLINGS, MONTANA

ELYSIAN ROAD

DETAIL 'A'
SCALE: 1"=30'



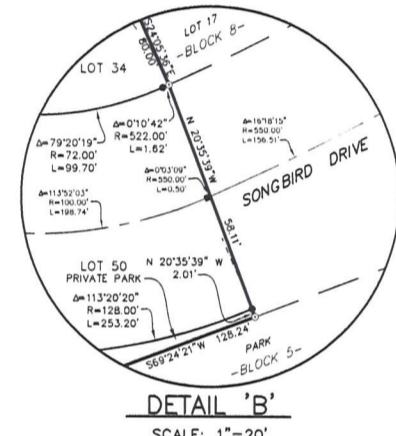
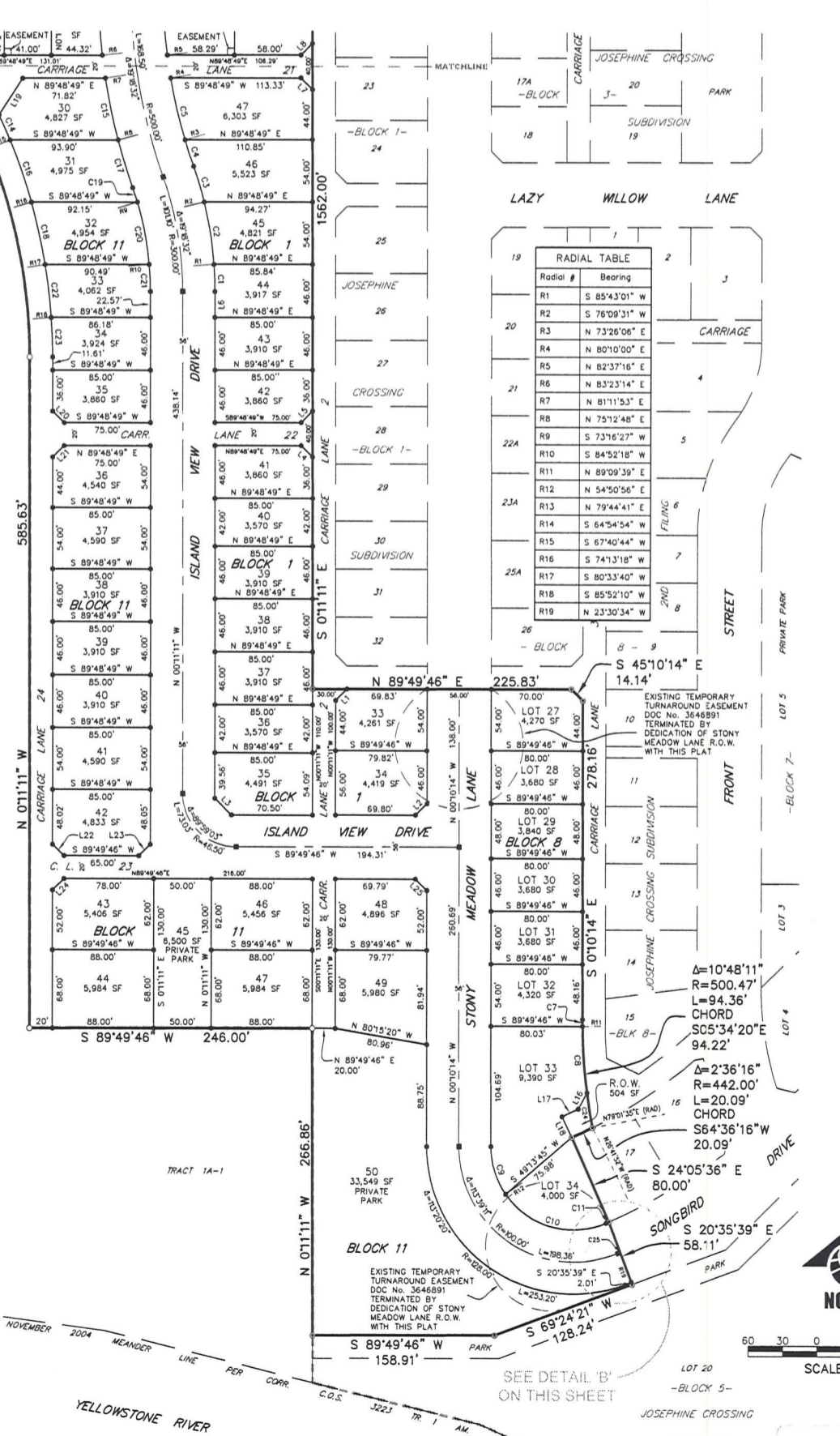
$\Delta=27'15.58"$
 $R=150.00'$
 $L=71.38'$
CHORD
 $N13'49'10"W$
70.71'

$\Delta=27'15.58"$
 $R=480.00'$
 $L=228.42'$
CHORD
 $N13'49'10"W$
226.27'

TRACT 1A-1
AMENDED TRACT 1A OF
CORRECTED CERTIFICATE
OF SURVEY No. 3223
AMENDING TRACT 1

Line #	Bearing	Distance
L1	N 44°49'17" E	14.14'
L2	S 44°49'46" W	14.14'
L3	N 45°10'43" W	20.51'
L4	S 45°11'11" E	14.14'
L5	S 44°48'49" W	14.14'
L6	N 00°11'11" W	22.57'
L7	N 45°11'11" W	14.14'
L8	N 44°48'49" E	14.14'
L9	N 45°11'11" W	14.14'
L10	N 44°48'49" E	14.14'
L11	S 45°11'11" E	14.14'
L12	S 44°48'49" W	14.14'
L13	S 45°11'11" E	14.14'
L14	S 44°48'49" W	14.14'
L15	S 45°11'11" E	14.14'
L16	S 28°17'25" W	16.12'
L17	S 64°36'16" W	15.68'
L18	S 2°23'44" E	20.00'
L19	N 32°41'30" E	37.97'
L20	N 45°11'11" W	14.14'
L21	N 44°48'49" E	14.14'
L22	N 45°10'43" W	14.14'
L23	S 44°49'17" W	14.14'
L24	N 44°49'17" E	14.14'
L25	S 45°10'43" W	14.14'

Curve #	Delta	Radius	Length
C1	4°05'48"	328.00'	23.45'
C2	9°33'30"	328.00'	54.72'
C3	5°39'14"	328.00'	32.37'
C4	2°55'49"	472.00'	24.14'
C5	6°43'54"	472.00'	55.46'
C6	7°11'33"	472.00'	59.25'
C7	0°40'07"	500.47'	5.84'
C8	6°36'43"	500.47'	57.75'
C9	34°58'48"	72.00'	43.96'
C10	78°40'21"	72.00'	98.86'
C11	0°16'11"	522.00'	2.46'
C12	6°25'34"	528.00'	59.22'
C13	10°04'08"	150.00'	26.36'
C14	2°45'50"	500.00'	24.12'
C15	5°56'06"	528.00'	55.15'
C16	6°32'34"	500.00'	57.10'
C17	4°42'30"	528.00'	43.39'
C18	6°20'22"	500.00'	55.32'
C19	2°46'10"	272.00'	13.15'
C20	11°35'51"	272.00'	55.06'
C21	4°56'31"	272.00'	23.46'
C22	5°16'30"	500.00'	46.32'
C23	3°56'39"	500.00'	34.42'
C24	3°3'21"	500.47'	30.77'
C25	0°05'29"	550.00'	0.88'



BASIS OF BEARINGS: PLAT OF JOSEPHINE CROSSING, THIRD FILING

- FOUND REBAR WITH CAP MARKED "ENGINEERING INC 8377S"
- FOUND SURVEY MONUMENT, REBAR WITH CAP MARKED "SANDERSON STEWART 18972LS", OR AS NOTED
- SET 5/8" X 18" REBAR WITH CAP MARKED WITH THE LICENSE NUMBER OF THE UNDERSIGNED LAND SURVEYOR AND "SANDERSON STEWART"
- SET INTERSECTION MONUMENT, 5/8"x18" REBAR WITH CAP MARKED WITH THE LICENSE NUMBER OF THE UNDERSIGNED LAND SURVEYOR AND "SANDERSON STEWART BILLINGS MT". WILL BE REPLACED WITH BRASS CAP MONUMENT BOX UPON COMPLETION OF STREET IMPROVEMENTS.

NOTE: ALL CURVES ARE TANGENT AND ALL PROPERTY LINES INTERSECTING CURVES ARE RADIAL UNLESS OTHERWISE NOTED.



SCALE: 1"=60'