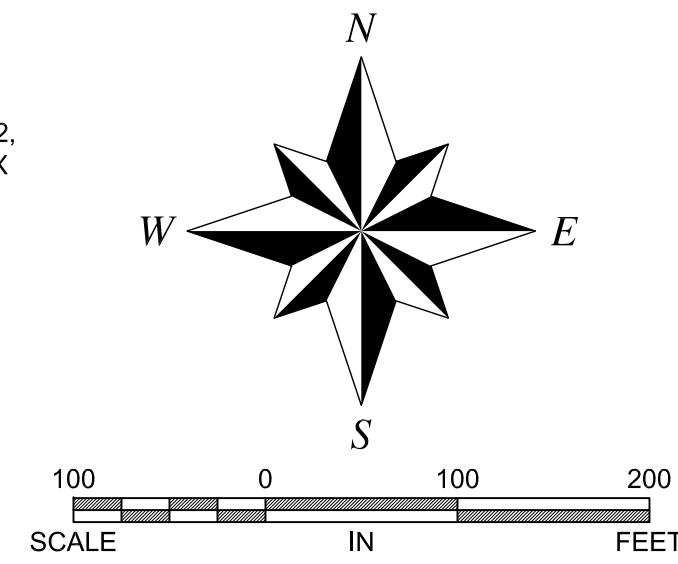


BASIS OF BEARINGS:

GEODETIC NORTH DETERMINED AT THE SOUTHWEST CORNER OF SECTION 32, T. 1 N., R. 25 E., P.M.M. WHICH IS A 2-1/2 INCH BRASS CAP IN A MONUMENT BOX AT THE INTERSECTION OF GRAND AVENUE AND 54TH STREET WEST AND IS LOCATED AT LATITUDE 45°47'02.67960"N, LONGITUDE 108°39'09.64736"W, NAD83(2011) (EPOCH 2010.0000).

BEARINGS SHOWN ARE GRID BEARINGS AND HAVE NOT BEEN ADJUSTED FOR CONVERGENCE.

DISTANCES SHOWN ARE GROUND DISTANCES.



PLAT OF SILVER CREEK ESTATES

BEING TRACT 1-A OF CERTIFICATE OF SURVEY No. 3362
 LOCATED IN THE NORTHEAST 1/4 OF SECTION 32, TOWNSHIP 1 NORTH, RANGE 25 EAST, P.M.M.
 CITY OF BILLINGS, YELLOWSTONE COUNTY, MONTANA
 PREPARED FOR : BOYER LAND, LLC

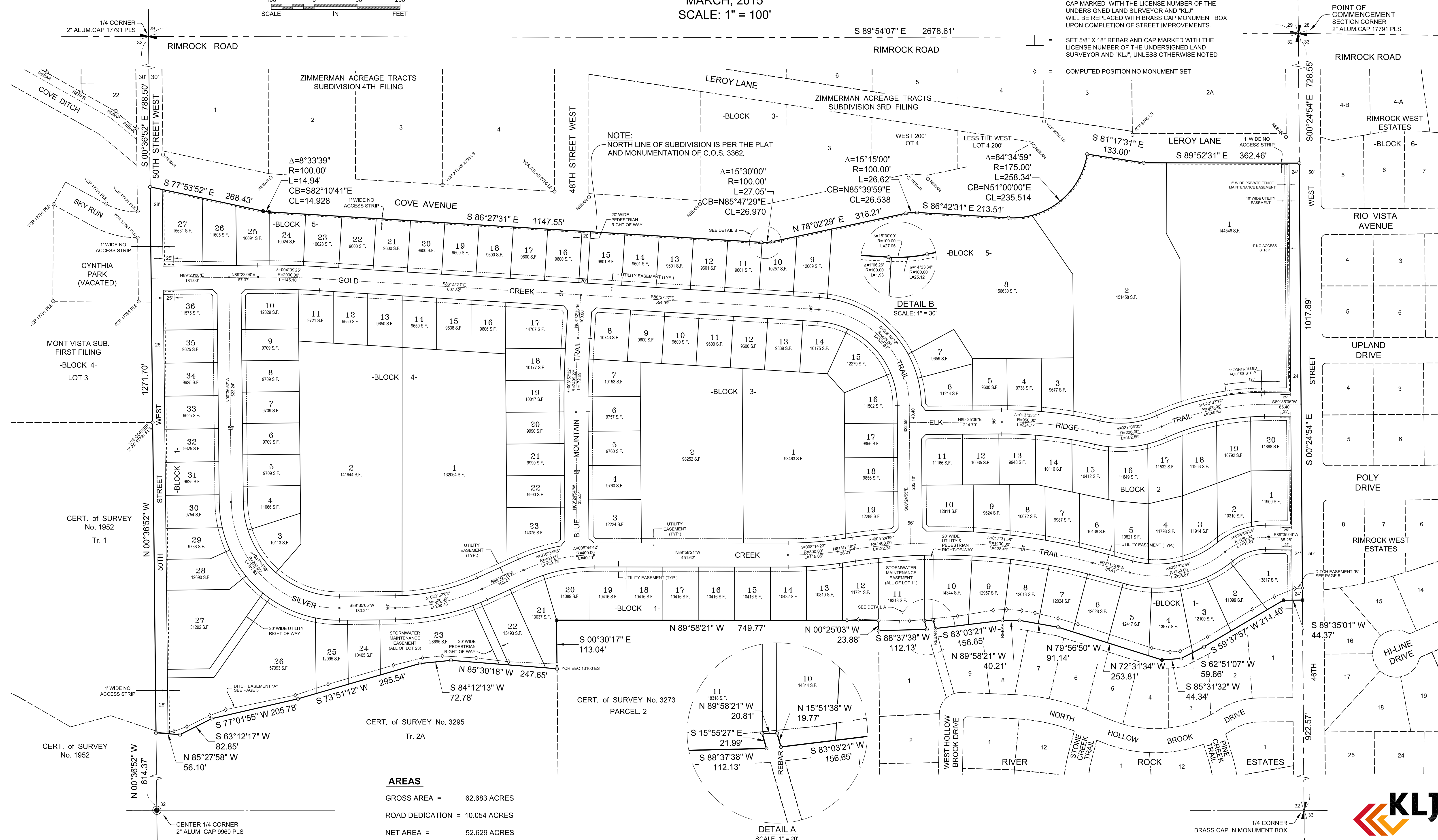
MARCH, 2015
 SCALE: 1" = 100'

LEGEND

- = FOUND SECTION CORNER
- = FOUND 1/4 CORNER
- = FOUND CENTER 1/4 CORNER
- = FOUND SURVEY CAPPED REBAR MONUMENT MARKED 15626 L.S. OR AS NOTED
- = SET SURVEY YELLOW CAPPED REBAR MONUMENT MARKED KLJ 17791 PLS
- = SET INTERSECTION MONUMENT, 5/8"x18" REBAR WITH CAP MARKED WITH THE LICENSE NUMBER OF THE UNDERSIGNED LAND SURVEYOR AND "KLJ". WILL BE REPLACED WITH BRASS CAP MONUMENT BOX UPON COMPLETION OF STREET IMPROVEMENTS.
- = SET 5/8" X 18" REBAR AND CAP MARKED WITH THE LICENSE NUMBER OF THE UNDERSIGNED LAND SURVEYOR AND "KLJ", UNLESS OTHERWISE NOTED
- = COMPUTED POSITION NO MONUMENT SET

NOTE:

NEW PROPERTY CORNER MONUMENTS WILL BE SET AFTER FINAL CONSTRUCTION OF STREETS AND UTILITIES.



NOTE:
 NORTH LINE OF SUBDIVISION IS PER THE PLAT AND MONUMENTATION OF C.O.S. 3362.

DETAIL B
 SCALE: 1" = 30'

DETAIL A
 SCALE: 1" = 20'

AREAS

GROSS AREA = 62.683 ACRES
 ROAD DEDICATION = 10.054 ACRES
 NET AREA = 52.629 ACRES

