

CERTIFICATE OF DEDICATION

STATE OF MONTANA )
County of Yellowstone )

KNOW ALL MEN BY THESE PRESENTS: That HIGH SIERRA II, INC., the owner of the following described tract of land, does hereby certify that it has caused to be surveyed, subdivided and platted into lots, blocks and streets as shown on the annexed plat, said tract being situated in the N1/2 of Section 17, T. 1 N., R. 26 E., P.M.M., in the City of Billings, Yellowstone County, Montana, said tract being more particularly described as follows, to-wit:

Lot 2A, Block 1 of Amended Plat of Lot 2, Block 1 and Lots 1, 2, & 3, Block 2 of Marisela Subdivision according to the official plat on file in the Office of the Clerk and Recorder of Yellowstone County, Montana, under Document No. 3724339.

The park requirement for this subdivision has been met by a land donation pursuant to Section 76-3-521(1)(a), M.C.A.

The undersigned hereby grants unto all utility companies, as such are defined and established by Montana Law, and cable television companies, an easement for the location, maintenance, repair and removal of their lines over, under and across the areas designated on the plat as "UTILITY EASEMENT" to have and hold forever. Said tract to be known and designated as HIGH SIERRA SUBDIVISION, 8th FILING, and the lands included in all streets, avenues, and parks as shown on the annexed plat are hereby granted and donated to the use of the public forever.

HIGH SIERRA II, INC., a Montana corporation

By: Title:

STATE OF MONTANA )
County of Yellowstone )

On this day of 20, before me, the undersigned Notary Public for the State of Montana, personally appeared of HIGH SIERRA II, INC., a Montana corporation, and acknowledged to me that said corporation executed the same. Witness my hand and seal the day and year herein above written.

Notary Public in and for the State of Montana

CERTIFICATE OF SURVEYOR

STATE OF MONTANA )
County of Yellowstone )

The undersigned, a Land Surveyor licensed in the State of Montana, states that during the month of October, 2014, a survey was performed under his supervision of a tract of land to be known as HIGH SIERRA SUBDIVISION, 8th FILING, in accordance with the request of the owner thereof and in conformance with the Montana Subdivision and Platting Act; said subdivision, description of boundaries and dimensions being in accordance with the Certificate of Dedication and as shown on the annexed plat; that the monuments found and set are of the character and occupy the positions shown hereon and that the gross area is 27.741 acres and the net area is 19.930 acres.

SANDERSON STEWART

By: Montana License No. Date:

CERTIFICATE OF CITY COUNCIL APPROVAL

STATE OF MONTANA )
County of Yellowstone )

We hereby certify that we have examined the annexed and foregoing PLAT OF HIGH SIERRA SUBDIVISION, 8th FILING, and find that said plat conforms with the requirements of the laws of the State of Montana, and the requirements of the Yellowstone County Board of Planning. It is therefore approved and the dedication to public use of any and all lands shown on this plat as being dedicated to such use are accepted.

IN WITNESS WHEREOF, we have set our hands and the seal of the CITY OF BILLINGS, MONTANA, this day of 20.

CITY OF BILLINGS, MONTANA
By: Mayor Attest: City Clerk

NOTICE OF APPROVAL

STATE OF MONTANA )
County of Yellowstone )

This plat has been approved for filing by the Yellowstone County Board of Planning and conforms to the recommendations of this board.

Date President

Executive Secretary

CERTIFICATE OF CITY ENGINEER'S OFFICE

I hereby certify that annexed and foregoing plat conforms with Section 76-4-125(2)(d), M.C.A., for the removal of sanitary restrictions since the plat is inside a master planning area and said lots will be provided with municipal facilities for the supply of water and the disposal of sewage and solid waste.

IN WITNESS WHEREOF, I have executed this CERTIFICATE OF APPROVAL this day of 20.

City Engineer's Office

ERRORS AND OMISSIONS REVIEW

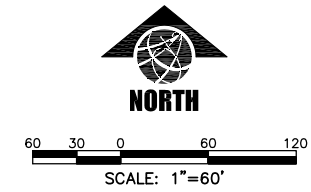
I hereby certify that I have examined the annexed and foregoing plat for errors and omissions in computations and drafting and find that said plat conforms with the requirements of the laws of the State of Montana, and that said plat conforms to the adjoining additions and plats of the City of Billings already platted as nearly as circumstances will permit.

Examining Land Surveyor Date

PLAT OF
HIGH SIERRA SUBDIVISION, 8th FILING
BEING LOT 2A, BLOCK 1 OF AMENDED PLAT OF LOT 2, BLOCK 1 AND
LOTS 1, 2, & 3, BLOCK 2 OF MARISELA SUBDIVISION
SITUATED IN N1/2 OF SECTION 17, T. 1 N., R. 26 E., P.M.M.,
IN THE CITY OF BILLINGS, YELLOWSTONE COUNTY, MONTANA
PREPARED FOR : HIGH SIERRA II, INC.
OCTOBER, 2014
PREPARED BY : SANDERSON STEWART BILLINGS, MONTANA

CERTIFICATE OF SURVEY No. 3573

TRACT B



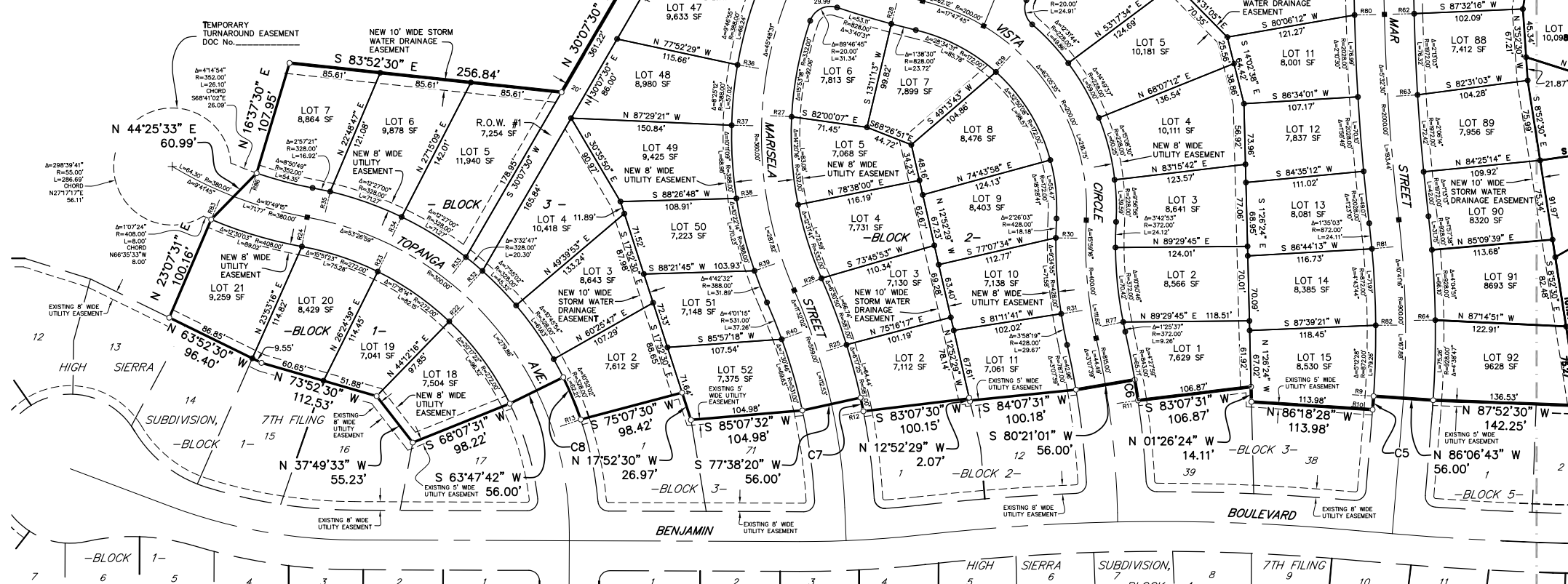
BASIS OF BEARING: THE BASIS OF BEARINGS FOR THIS SURVEY HAS BEEN DERIVED FROM GPS OBSERVATIONS AND IS BASED ON A NAD 83, LAMBERT CONFORMAL CONIC, SINGLE PARALLEL, LOW DISTORTION PROJECTION FOR THE CITY OF BILLINGS; HAVING A POINT OF ORIGIN AT 45°47'00" N LATITUDE AND 108°22'00" W LONGITUDE WITH A SCALE FACTOR OF 1.0001515. DISTANCES ARE GRID, INTERNATIONAL FEET, GRID TO GROUND COMBINED FACTOR IS 1.0000265. THE CONVERGENCE ANGLE AT THE NE CORNER OF SECTION 17 (P.O.C.) IS -0°03'54".

- FOUND SURVEY MONUMENT, REBAR WITH CAP MARKED "ENGINEERING INC 8377-5", OR AS NOTED
SET 5/8" X 18" REBAR WITH CAP MARKED WITH THE LICENSE NUMBER OF THE UNDERSIGNED LAND SURVEYOR AND "SANDERSON STEWART"
SET INTERSECTION MONUMENT, 5/8"x18" REBAR WITH CAP MARKED WITH THE LICENSE NUMBER OF THE UNDERSIGNED LAND SURVEYOR AND "SANDERSON STEWART M.T.". WILL BE REPLACED WITH BRASS CAP MONUMENT BOX UPON COMPLETION OF STREET IMPROVEMENTS.

NOTE: ALL CURVES ARE TANGENT AND ALL PROPERTY LINES INTERSECTING CURVES ARE RADIAL UNLESS OTHERWISE NOTED.

AREA DATA table with columns: NET (LOTS), PARKLAND, STREET DEDICATION, GROSS AREA. Values: 19.930 AC, 1.681 AC, 6.130 AC, 27.741 AC.

CERTIFICATE OF SURVEY No. 3573
TRACT B



RADIAL TABLE with columns: No., Bearing, No., Bearing, No., Bearing, No., Bearing. Lists bearings for radial lines.

LINE TABLE with columns: No., Bearing, Distance. Lists bearings and distances for line segments.

CURVE TABLE with columns: No., Delta, Radius, Length, Chord Bearing, Chord Dist. Lists curve data.

CERTIFICATE OF CITY ATTORNEY

This document has been reviewed by the City Attorney's office and is acceptable as to form.

Date:

Reviewed by:

CERTIFICATE OF COUNTY TREASURER

I hereby certify that all real property taxes and special assessments have been paid per 76-3-611(1)(b) / 76-3-207(5), M.C.A.

Date: Yellowstone County Treasurer

By: Deputy

RESERVED FOR CLERK AND RECORDER

CONSENT TO PLATTING
Document No.:
CONSENT TO PLATTING
Document No.:
SUBDIVISION IMPROVEMENTS AGREEMENT
Document No.: