

PROPOSED PRELIMINARY PLAT OF AMENDED LOT 2, BLOCK 1,
WESTWARD HO SUBDIVISION

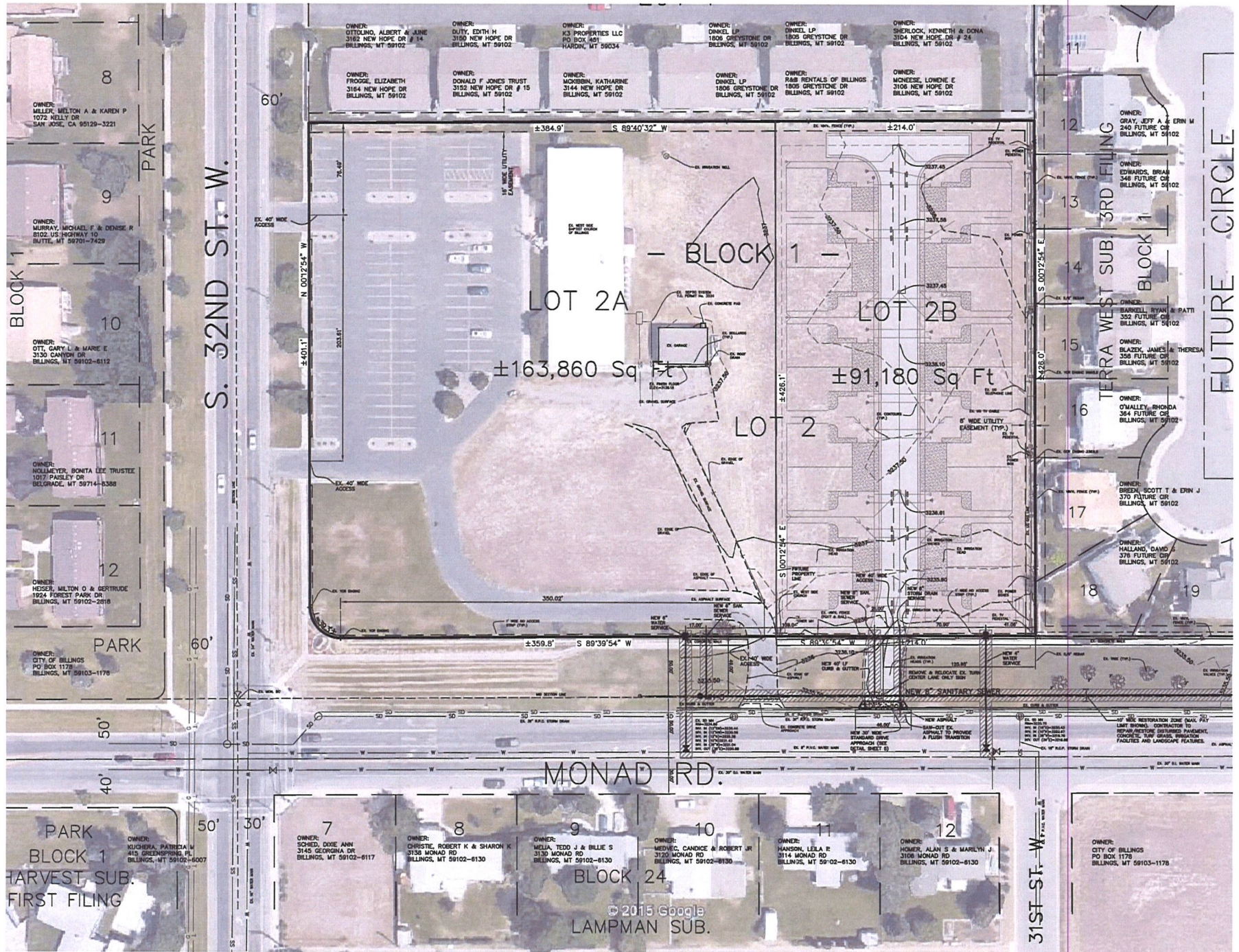
SITUATED IN THE NW1/4 OF SECTION 12, T. 1 S., R. 25 E., P.M.M.
 IN THE CITY OF BILLINGS, YELLOWSTONE COUNTY, MONTANA

PREPARED FOR : RIVER POINT EDGE, LLC

JULY 2015

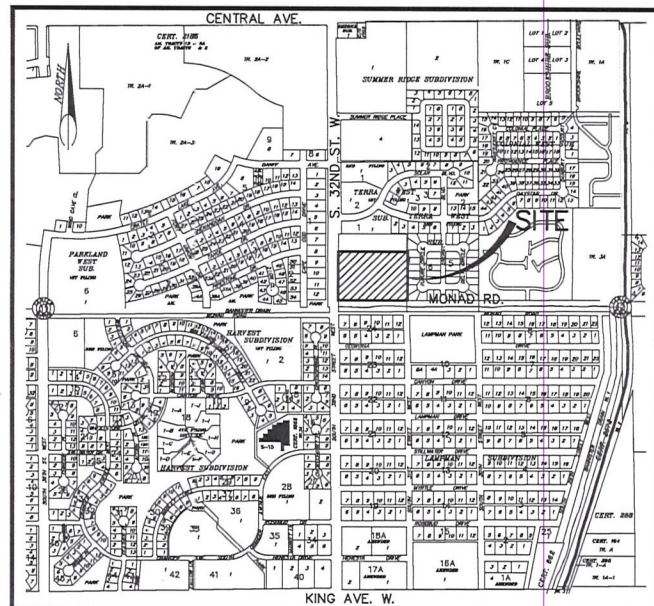
PREPARED BY : SANDERSON STEWART 

BILLINGS, MONTANA



PLAT DATA

GROSS AREA	= ±255,040 Sq Ft
NET AREA	= ±255,040 Sq Ft
NUMBER OF LOTS	= TWO
MINIMUM LOT SIZE	= ±91,180 Sq Ft
MAXIMUM LOT SIZE	= ±163,860 Sq Ft
LINEAL FEET OF STREETS	= 0
PARKLAND REQUIREMENT	= N/A
PARKLAND DEDICATION	= N/A
EXISTING ZONING	= PUBLIC & R6000
SURROUNDING ZONING:	
NORTH	= R6000
SOUTH	= R9600
EAST	= R6000
WEST	= PUD
EXISTING LAND USE	= CHURCH
PROPOSED LAND USE:	
LOT 2A	= CHURCH
LOT 2B	= RESIDENTIAL CONDOMINIUM



VICINITY MAP

