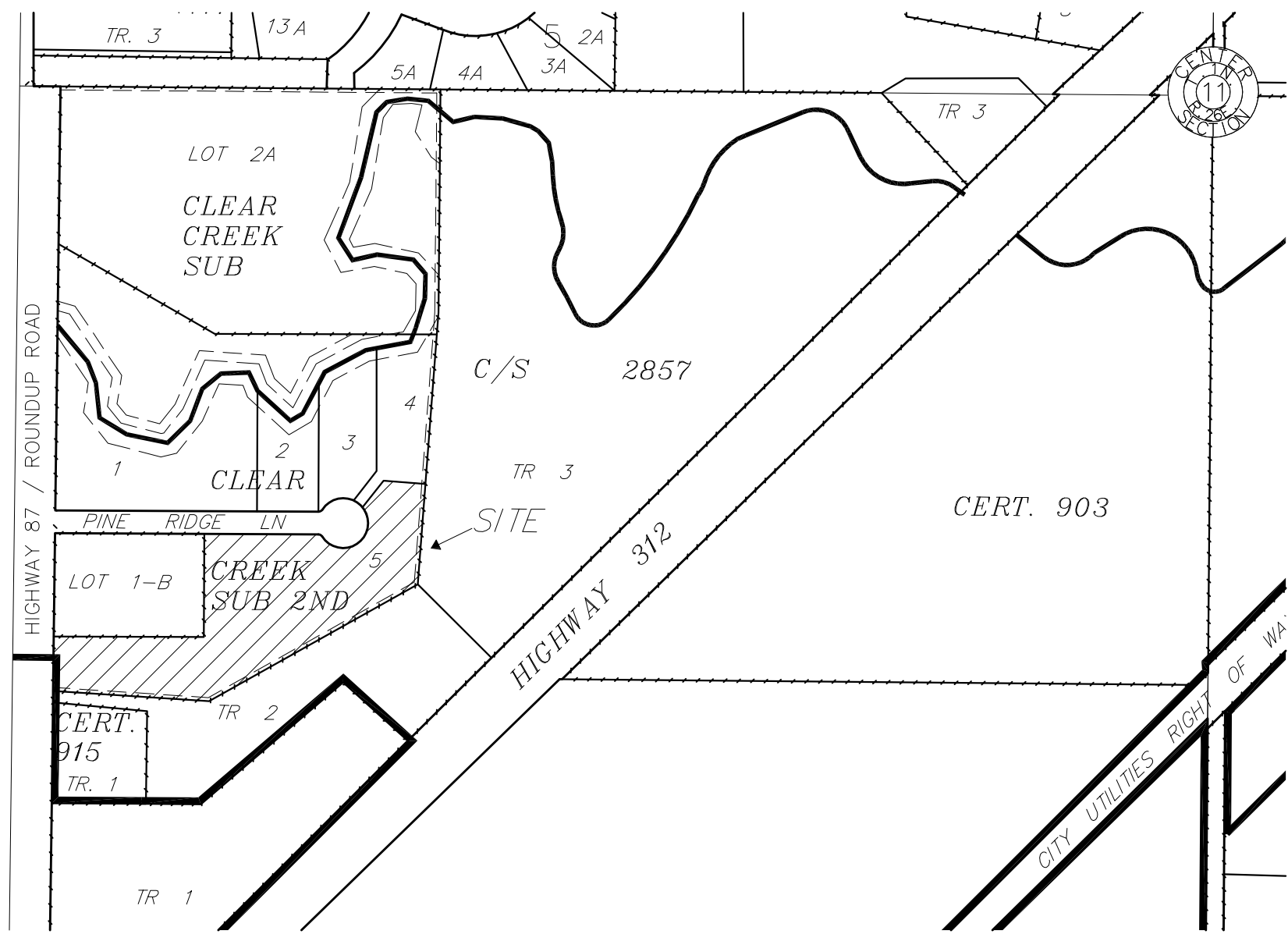


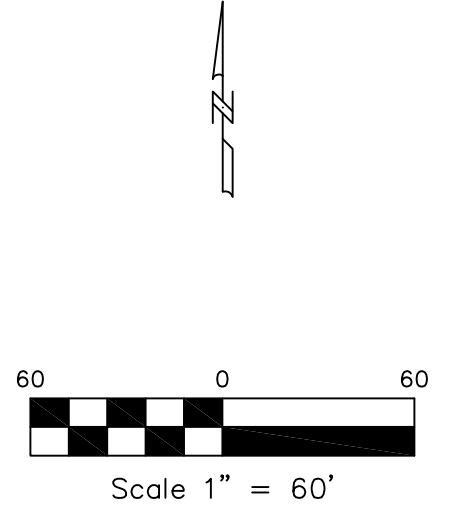
PRELIMINARY PLAT OF
AMENDED LOT 5, BLOCK 1,
CLEAR CREEK SUBDIVISION, 2ND FILING

SITUATED IN THE SW 1/4, SECTION 11, T. 1 N., R. 26 E., P.M.M.
YELLOWSTONE COUNTY, MONTANA



VICINITY MAP
NOT TO SCALE

PREPARED FOR: BOB LABERT
SURVEYOR: NORTH STAR LAND SERVICES, P.C.
ENGINEER: BLUELINE ENGINEERING LLC
APRIL, 2015
BILLINGS, MONTANA



SUBDIVISION DETAILS:

GROSS AREA	=	3.819 ACRES
NET AREA	=	3.819 ACRES
ROAD AREA	=	0.00 ACRES
NUMBER OF LOTS	=	2
MINIMUM LOT SIZE	=	0.990 ACRES
MAXIMUM LOT SIZE	=	2.829 ACRES
EXISTING ZONING	=	Community Commercial

SURROUNDING ZONING	=	
NORTH	=	Community Commercial
SOUTH	=	Community Commercial
EAST	=	Community Commercial
WEST	=	Community Commercial
EXISTING LAND USE	=	VACANT
PROPOSED LAND USE	=	RESIDENTIAL/ COMMERCIAL

