

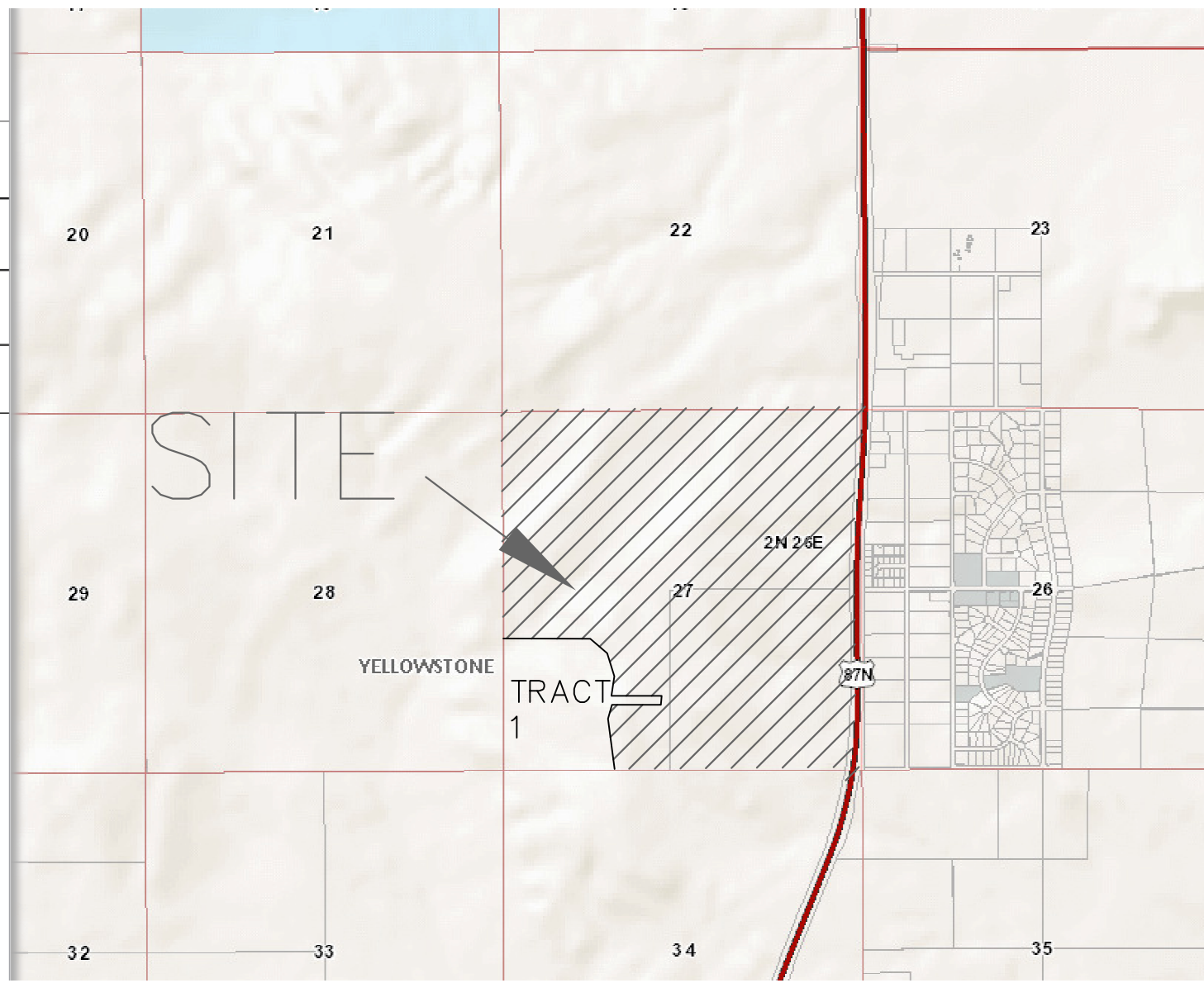
PRELIMINARY PLAT OF PINEROCK SUBDIVISION

BEING TRACT 2 C/S _____ IN SECTION 27, T. 2 N., R. 26 E., P.M.M.
YELLOWSTONE COUNTY, MONTANA

PREPARED FOR: VTR PROPERTIES LLC
 SURVEYOR: NORTH STAR LAND SERVICES, P.C.
 ENGINEER: BLUELINE ENGINEERING LLC
 NOVEMBER, 2015
 BILLINGS, MONTANA

SUBDIVISION DETAILS:

GROSS AREA	=	537.542 ACRES
NET AREA	=	525.314 ACRES
ROAD AREA	=	12.228 ACRES
NUMBER OF LOTS	=	47
MINIMUM LOT SIZE	=	1.796 ACRES
MAXIMUM LOT SIZE	=	3.213 ACRES
EXISTING ZONING	=	NONE
SURROUNDING ZONING	=	NONE
NORTH	=	NONE
SOUTH	=	A1
EAST	=	NONE
WEST	=	NONE/ GRAZING
EXISTING LAND USE	=	VACANT
PROPOSED LAND USE	=	RESIDENTIAL



VICINITY MAP
NOT TO SCALE

