

PRELIMINARY PLAT OF AMENDED LOT 1, BLOCK 4, MOODY SUBDIVISION 2nd FILING

SITUATED IN THE NW1/4 OF SECTION 23, T. 1 N., R. 26 E., P.M.M.
IN THE CITY OF BILLINGS, YELLOWSTONE COUNTY, MONTANA

PREPARED FOR : KINCAID LAND LLC

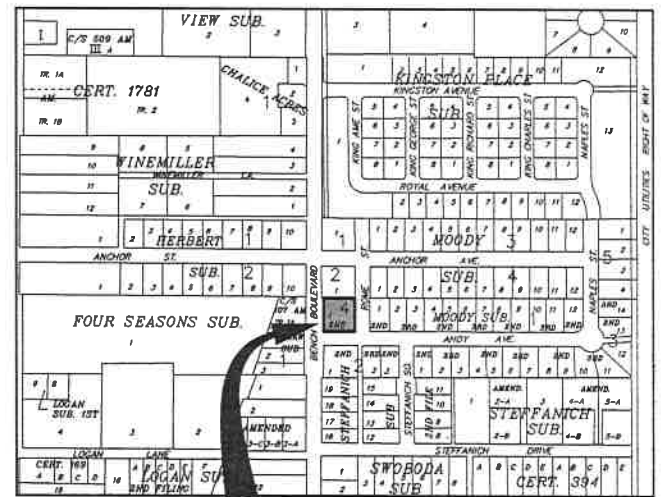
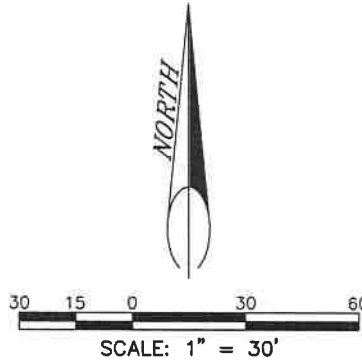
OCTOBER, 2015

PREPARED BY : SANDERSON STEWART

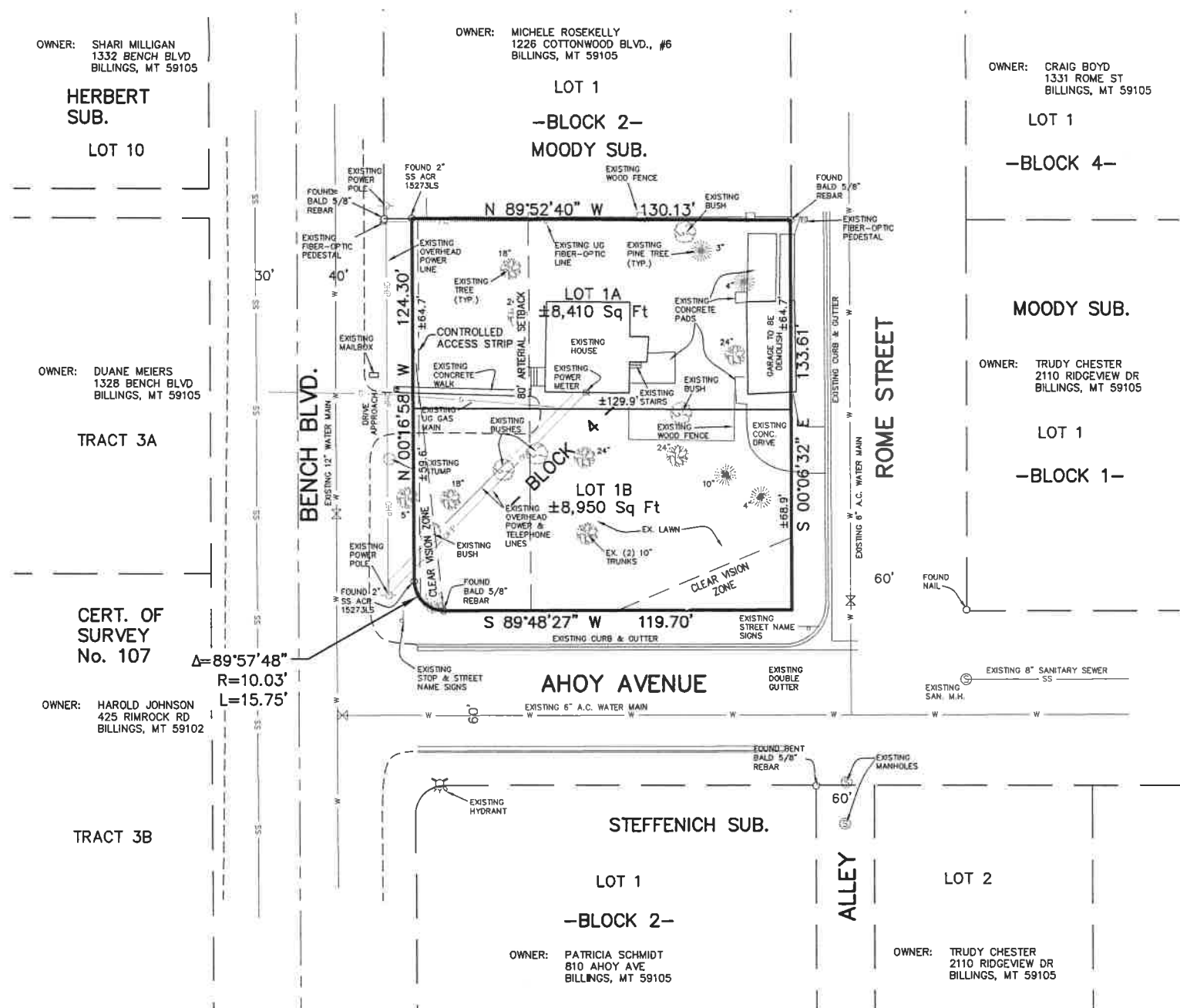
BILLINGS, MONTANA

PLAT DATA

GROSS AREA	=	17,360 S.F.
NET AREA	=	17,360 S.F.
NUMBER OF LOTS	=	2
MINIMUM LOT SIZE	=	8,410 S.F.
MAXIMUM LOT SIZE	=	8,950 S.F.
PARKLAND REQUIREMENT	=	NONE
EXISTING ZONING	=	R7000
SURROUNDING ZONING:		
NORTH	=	R7000
SOUTH	=	R7000
EAST	=	R7000
WEST	=	R7000
EXISTING LAND USE	=	SINGLE FAMILY RESIDENTIAL
PROPOSED LAND USE	=	SINGLE FAMILY RESIDENTIAL



VICINITY MAP
NOT TO SCALE



P:\15064_Moody_Sub_2\15064_Minor_Plat_PMICADD_C3DIPRODUCTION_DWG\15064_PRELIM_PLAT.dwg, 18x24 PLAT, 11/11/2015 1:34:15 PM, pkinapp, 1:1.69745