

### SITE LANDSCAPE REQUIREMENTS

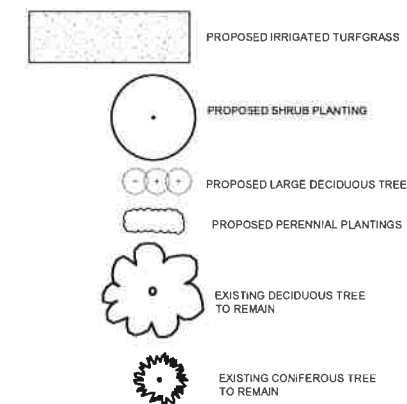
**WOODY AVE - 439' IF FRONTAGE**  
 10 TREES REQUIRED (1 PER 40')  
 < 20' LANDSCAPED BUFFERYARD  
 (4) EXISTING TREES IN BUFFERYARD  
 (8) 2" CAL TREES PROPOSED

**COLTON BLVD - 525' IF FRONTAGE**  
 13 TREES REQUIRED (1 PER 40')  
 < 20' LANDSCAPED BUFFERYARD  
 (3) EXISTING TREES IN BUFFERYARD PRESERVED  
 (10) 2" CAL PROPOSED

**PARKING LOT LANDSCAPE**  
 < 3,887 SF OF PARKING LOT LANDSCAPE PROVIDED  
 16 TREES REQUIRED  
 (4) EXISTING TREES PRESERVED  
 (12) TREES PROVIDED

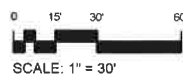
**EAST AND SOUTH PROPERTY BUFFERYARD**  
 THE EAST AND SOUTH PROPERTY BOUNDARY ADJAINS A PUBLIC USE (BCS). ST THOMAS WILL COORDINATE THE DESIGN OF THE DRIVEWAY LANDSCAPING SO THAT EACH SIDE OF THE ROAD INCORPORATED THE REQUIRED PERIMETER LANDSCAPING OF 5' AND 1 TREE PER 40'

### LANDSCAPE LEGEND



1 SITE PLAN

1" = 30'-0"



NOT FOR CONSTRUCTION - PRELIMINARY DESIGN

© 2015 | ALL RIGHTS RESERVED  
 SPECIAL REVIEW APPLICATION

12.07.2015  
 DRAWN BY | RUSH  
 REVISIONS

SITE PLAN

**SITE**

2055 WOODY DRIVE  
 CHURCH RENOVATION  
**ST THOMAS THE APOSTLE CHURCH**