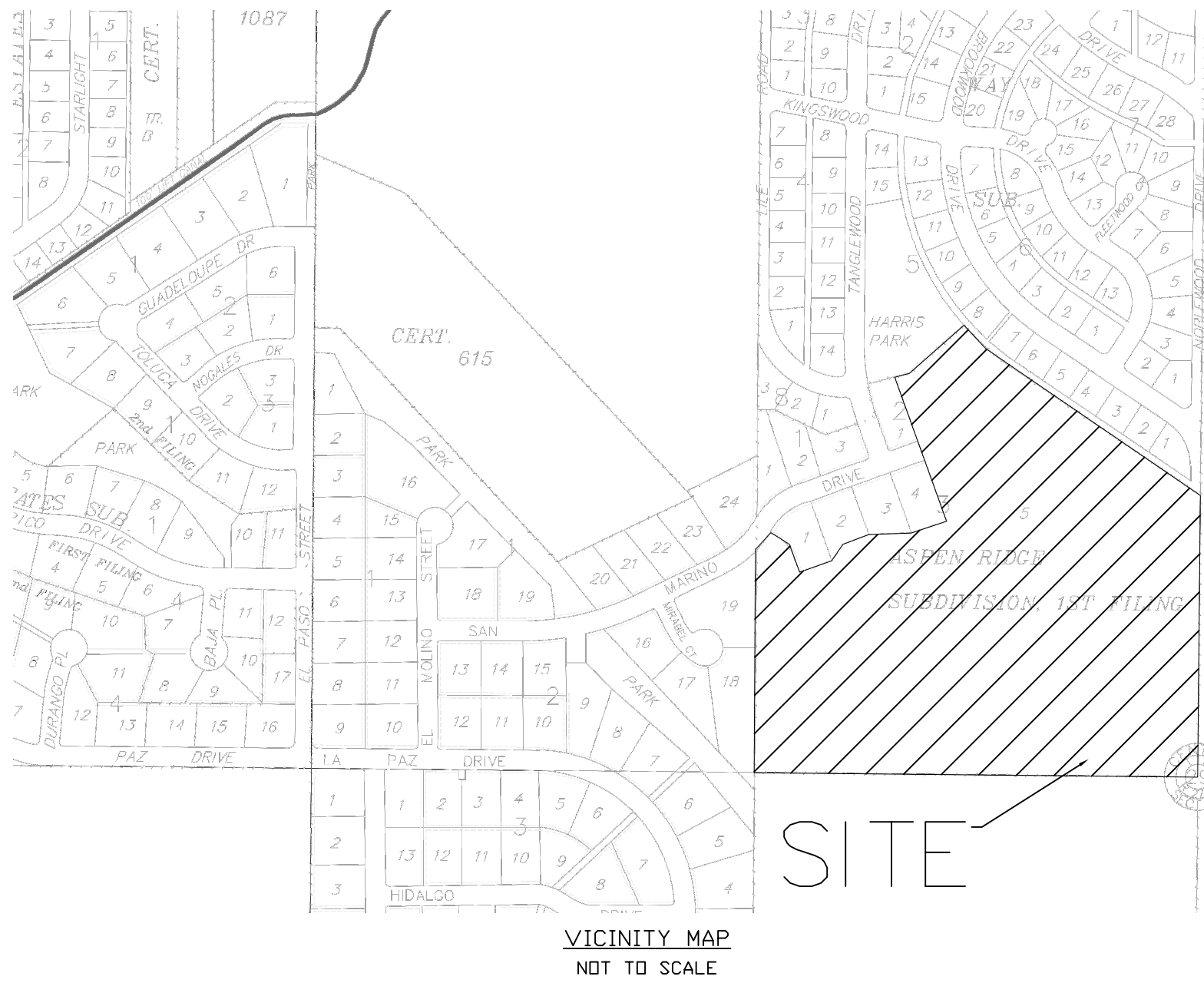


PRELIMINARY PLAT OF ASPEN RIDGE SUBDIVISION, 2ND FILING

BEING LOT 5, BLOCK 3, ASPEN RIDGE SUBDIVISION, 1ST FILING,
SITUATED IN THE SE 1/4, SW 1/4, SECTION 29, T. 1 N., R. 27 E., P.M.M.
YELLOWSTONE COUNTY, MONTANA

PREPARED FOR: SUPERIOR BUILDERS LLP
SURVEYOR: NORTH STAR LAND SERVICES, P.C.
ENGINEER: BLUELINE ENGINEERING LLC
JANUARY, 2016
BILLINGS, MONTANA



SUBDIVISION DETAILS:

GROSS AREA = 28.98 ACRES
NET AREA = 27.158 ACRES
ROAD AREA = 1.822 ACRES
PARK LAND = 0.000 ACRES
NUMBER OF LOTS = 15
MINIMUM LOT SIZE = 0.505 ACRES
MAXIMUM LOT SIZE = 18.598 ACRES
EXISTING ZONING = R-9600
SURROUNDING ZONING =
NORTH = R-9600
SOUTH = AG SUBURBAN
EAST = R-9600
WEST = R-9600
EXISTING LAND USE = VACANT
PROPOSED LAND USE = RESIDENTIAL

CURVE TABLE					
CURVE #	ARC LENGTH	RADIUS	DELTA	CHORD BEARING	CHORD LENGTH
C1	168.08	270.08	35°39'24"	S87°30'32"W	165.38
C2	83.75	270.08	17°45'58"	N65°46'47"W	83.41
C3	9.20	10.00	52°41'41"	N30°32'42"W	8.88
C4	52.72	56.00	53°56'08"	S31°09'56"E	50.79
C5	119.11	56.00	121°52'00"	N60°56'00"E	97.89
C6	82.12	56.00	84°01'22"	N42°00'41"W	74.96
C7	9.20	10.00	52°41'41"	S83°14'24"E	8.88
C8	16.13	330.07	2°48'01"	N58°17'44"W	16.13
C9	96.89	330.07	16°49'10"	N68°06'20"W	96.55
C10	96.66	330.07	16°46'46"	N84°54'18"W	96.32
C11	97.54	330.07	16°55'55"	S78°14'21"W	97.19
C12	251.82	270.08	53°25'22"	N83°36'29"W	242.80
C13	278.94	56.00	285°23'23"	N33°06'27"E	67.88
C14	291.10	330.07	50°31'52"	N84°57'41"W	281.76
C15	7.50	190.00	2°15'47"	S30°42'54"W	7.50

