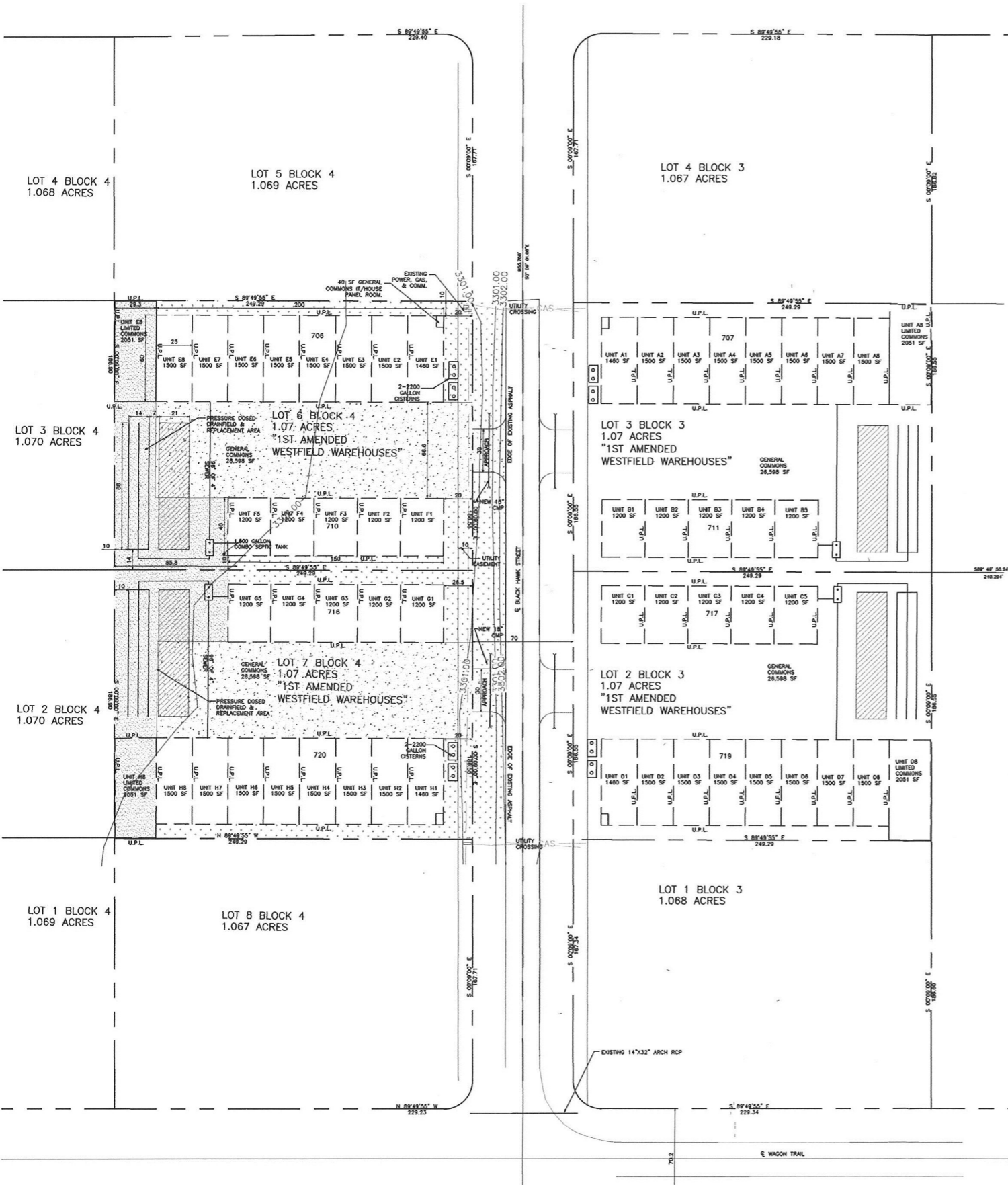
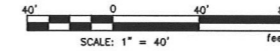


**EXHIBIT "B"**  
**PRELIMINARY SITE PLAN**  
**1ST AMENDED**  
**WESTFIELD WAREHOUSES**

BEING LOTS 2 & 3, BLOCK 3 AND LOTS 6 & 7, BLOCK 4 WEST KING  
 COMMERCIAL PARK SUBDIVISION  
 LOCATED IN THE SE 1/4 OF SECTION 7, TOWNSHIP 1 SOUTH, RANGE 25  
 EAST, P.M.M., YELLOWSTONE COUNTY, STATE OF MONTANA



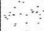
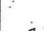


**AREA CALCULATIONS FOR**  
**1ST AMENDED WEST FIELD WAREHOUSES**

<b>707 BLACK HAWK STREET</b>	
UNIT A1	1,460 SQ. FT.
UNIT A2	1,500 SQ. FT.
UNIT A3	1,500 SQ. FT.
UNIT A4	1,500 SQ. FT.
UNIT A5	1,500 SQ. FT.
UNIT A6	1,500 SQ. FT.
UNIT A7	1,500 SQ. FT.
UNIT A8	1,500 SQ. FT.
<b>711 BLACK HAWK STREET</b>	
UNIT B1	1,200 SQ. FT.
UNIT B2	1,200 SQ. FT.
UNIT B3	1,200 SQ. FT.
UNIT B4	1,200 SQ. FT.
UNIT B5	1,200 SQ. FT.
<b>717 BLACK HAWK STREET</b>	
UNIT C1	1,200 SQ. FT.
UNIT C2	1,200 SQ. FT.
UNIT C3	1,200 SQ. FT.
UNIT C4	1,200 SQ. FT.
UNIT C5	1,200 SQ. FT.
<b>719 BLACK HAWK STREET</b>	
UNIT D1	1,460 SQ. FT.
UNIT D2	1,500 SQ. FT.
UNIT D3	1,500 SQ. FT.
UNIT D4	1,500 SQ. FT.
UNIT D5	1,500 SQ. FT.
UNIT D6	1,500 SQ. FT.
UNIT D7	1,500 SQ. FT.
UNIT D8	1,500 SQ. FT.
<b>706 BLACK HAWK STREET</b>	
UNIT E1	1,460 SQ. FT.
UNIT E2	1,500 SQ. FT.
UNIT E3	1,500 SQ. FT.
UNIT E4	1,500 SQ. FT.
UNIT E5	1,500 SQ. FT.
UNIT E6	1,500 SQ. FT.
UNIT E7	1,500 SQ. FT.
UNIT E8	1,500 SQ. FT.
<b>710 BLACK HAWK STREET</b>	
UNIT F1	1,200 SQ. FT.
UNIT F2	1,200 SQ. FT.
UNIT F3	1,200 SQ. FT.
UNIT F4	1,200 SQ. FT.
UNIT F5	1,200 SQ. FT.
<b>716 BLACK HAWK STREET</b>	
UNIT G1	1,200 SQ. FT.
UNIT G2	1,200 SQ. FT.
UNIT G3	1,200 SQ. FT.
UNIT G4	1,200 SQ. FT.
UNIT G5	1,200 SQ. FT.
<b>720 BLACK HAWK STREET</b>	
UNIT H1	1,460 SQ. FT.
UNIT H2	1,500 SQ. FT.
UNIT H3	1,500 SQ. FT.
UNIT H4	1,500 SQ. FT.
UNIT H5	1,500 SQ. FT.
UNIT H6	1,500 SQ. FT.
UNIT H7	1,500 SQ. FT.
UNIT H8	1,500 SQ. FT.
ALL UNITS:	71,840 SQ. FT.
LIMITED COMMON 707 UNIT A8	2,051 SQ. FT.
LIMITED COMMON 719 UNIT D8	2,051 SQ. FT.
LIMITED COMMON 706 UNIT E8	2,051 SQ. FT.
LIMITED COMMON 720 UNIT H8	2,051 SQ. FT.
GENERAL COMMON AREA	106,392 SQ. FT.
<b>TOTAL:</b>	<b>186,436 SQ. FT.</b>

**SUBDIVISION DETAILS:**

GROSS AREA: 4.28 ACRES  
 NET AREA: 4.28 ACRES  
 ROAD AREA: 0 ACRES (PRIVATE ACCESS)  
 NUMBER OF LOTS: 52  
 MAXIMUM LOT SIZE: 3,551 SQUARE FEET  
 MINIMUM LOT SIZE: 1,200 SQUARE FEET  
 PARK DEDICATION: 0.00 ACRES  
 EXISTING LAND USE: COMMERCIAL UNDEVELOPED  
 PROPOSED LAND USE: COMMERCIAL CONDO'S

AREA IS NOT ZONED

-  PROPOSED GRAVEL
-  PROPOSED CONCRETE
-  PROPOSED 1-1/2" LANDSCAPE ROCK  
 NOTE:  
 LANDSCAPE ROCK ALONG ROAD TO BE PLACED  
 SO TOP OF ROCK IS BELOW ROADWAY ELEV.
-  LIMITED COMMON, GENERAL COMMON  
 & UNIT PROPERTY LINES

**VICINITY MAP**

