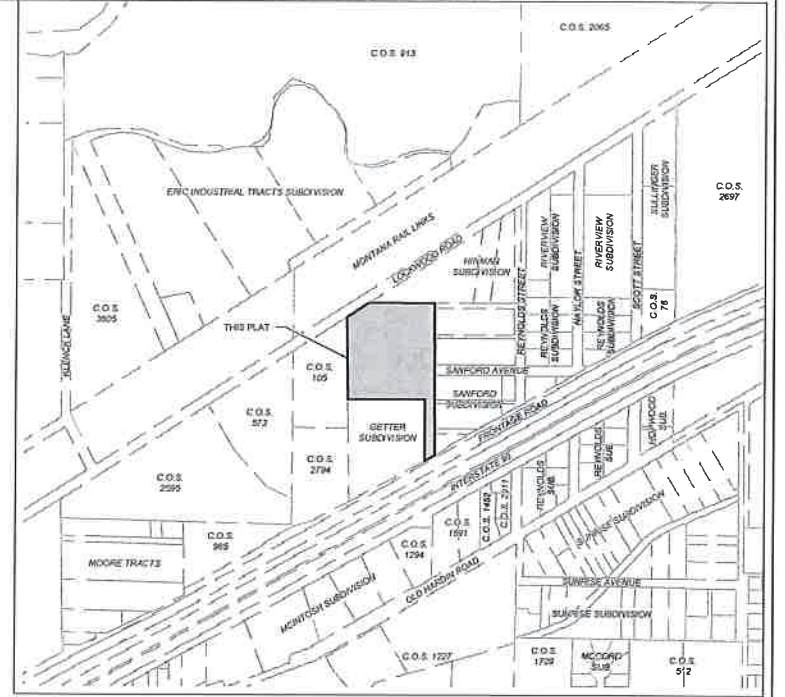
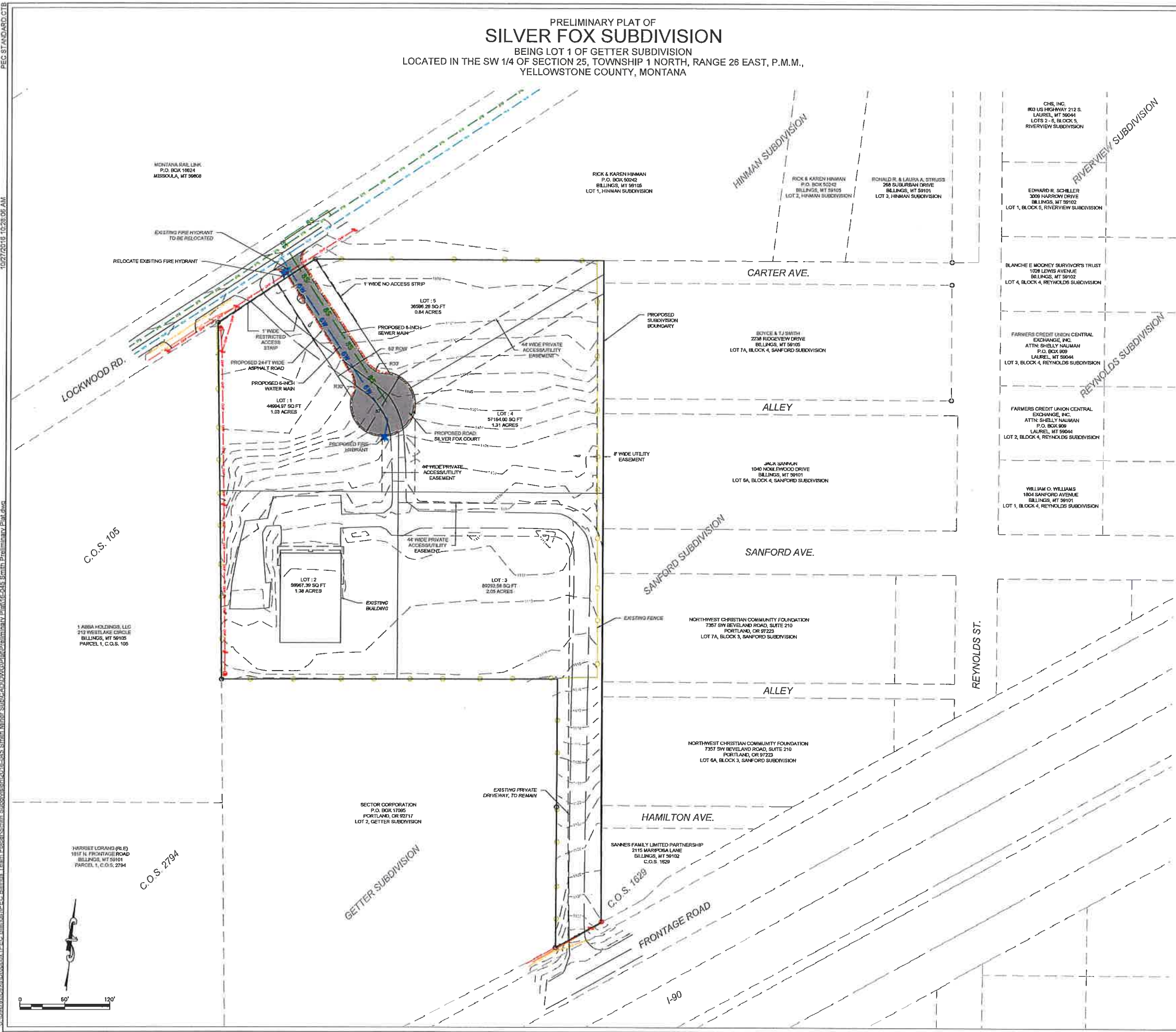


PRELIMINARY PLAT OF
SILVER FOX SUBDIVISION

BEING LOT 1 OF GETTER SUBDIVISION
LOCATED IN THE SW 1/4 OF SECTION 25, TOWNSHIP 1 NORTH, RANGE 26 EAST, P.M.M.,
YELLOWSTONE COUNTY, MONTANA



SITE DATA	
# OF COMMERCIAL LOTS	5
MAXIMUM LOT AREA	± 2.05 AC
MINIMUM LOT AREA	± 0.84 AC
PARKLAND AREA	NA
LINEAL FEET OF STREETS	±213 LF
ROADWAY AREA	±0.25 AC
NET ACREAGE	± 6.61 AC
GROSS ACREAGE	± 7.00 AC

EXISTING LAND USE: COMMERCIAL
EXISTING ZONING: CONTROLLED INDUSTRIAL

PROPOSED LAND USE: COMMERCIAL
PROPOSED ZONING: CONTROLLED INDUSTRIAL

PROPERTY OWNERS:
BOYCE AND TJ SMITH

PRELIMINARY PLAT DATE: SEPTEMBER 27, 2016

PROJECT TITLE:		SILVER FOX SUBDIVISION		SHEET
7100 COMMERCIAL AVE, SUITE 4 BILLINGS, MT 59101 OFFICE - 405-354-0680 www.performance-ec.com		PERFORMANCE ENGINEERING & CONSULTING		
REVISIONS	DATE	BY		1 OF 1
DRAWN BY: JMD		CHECKED BY: CPD	DATE: 9/13/2016	

10/27/2016 10:28:36 AM
C:\Users\jld\OneDrive\PEC\Billican\Team\Edgar\Smith\Subdivision\SilverFox\2016\09-27-16\045_Smith_Preliminary_Plat\045_Smith_Preliminary_Plat.dwg