

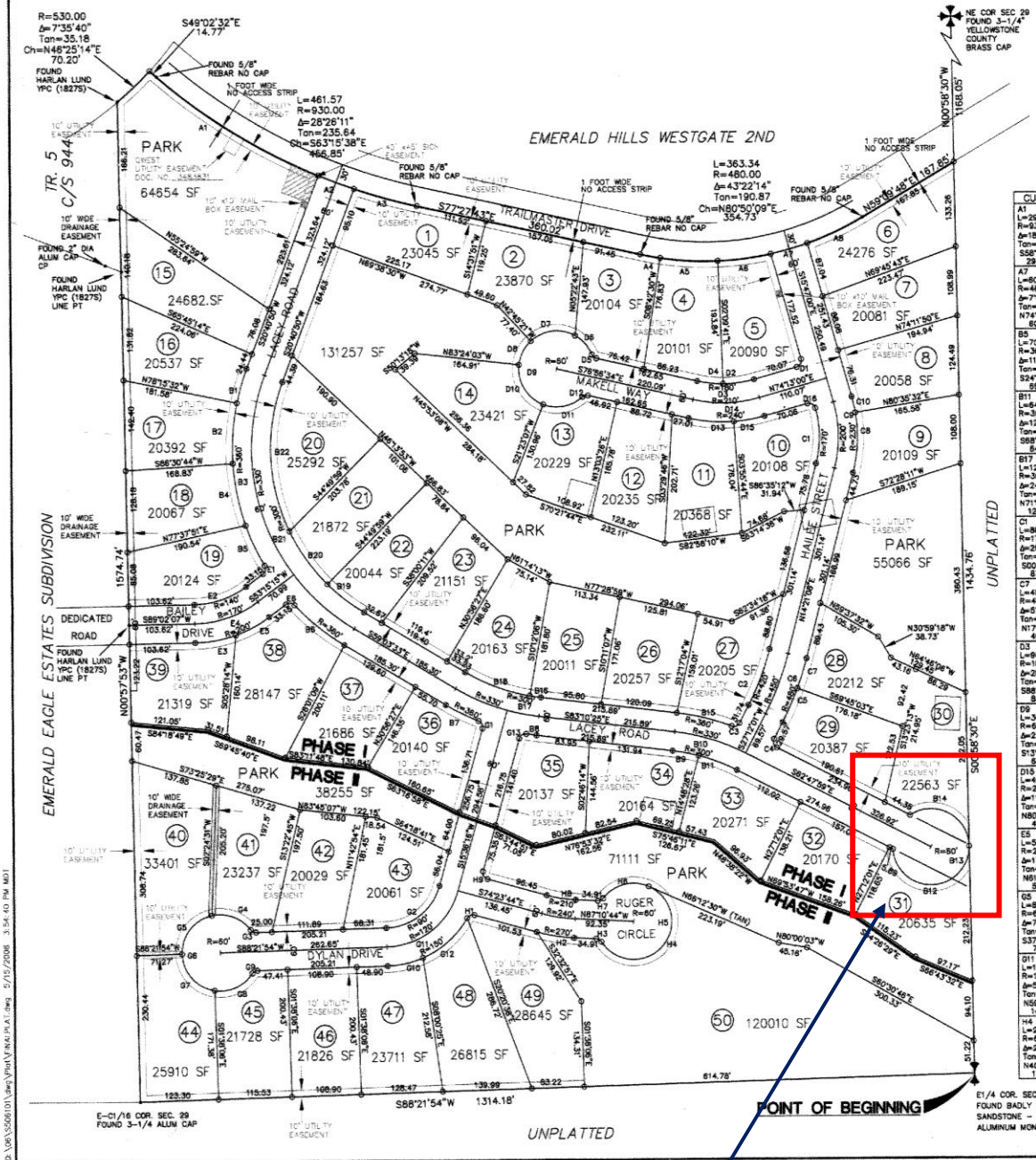
PLAT OF TWIN COULEE ESTATES SUBDIVISION

BEING A TRACT OF LAND SITUATED IN THE NE1/4 OF SECTION 29, T. 1 N, R. 27 E, P.M.M.,
YELLOWSTONE COUNTY, MONTANA

FOR: SUNMONTANA LLC

BY: HKM ENGINEERING INC.
P.O. BOX 31318
BILLINGS, MT 59107

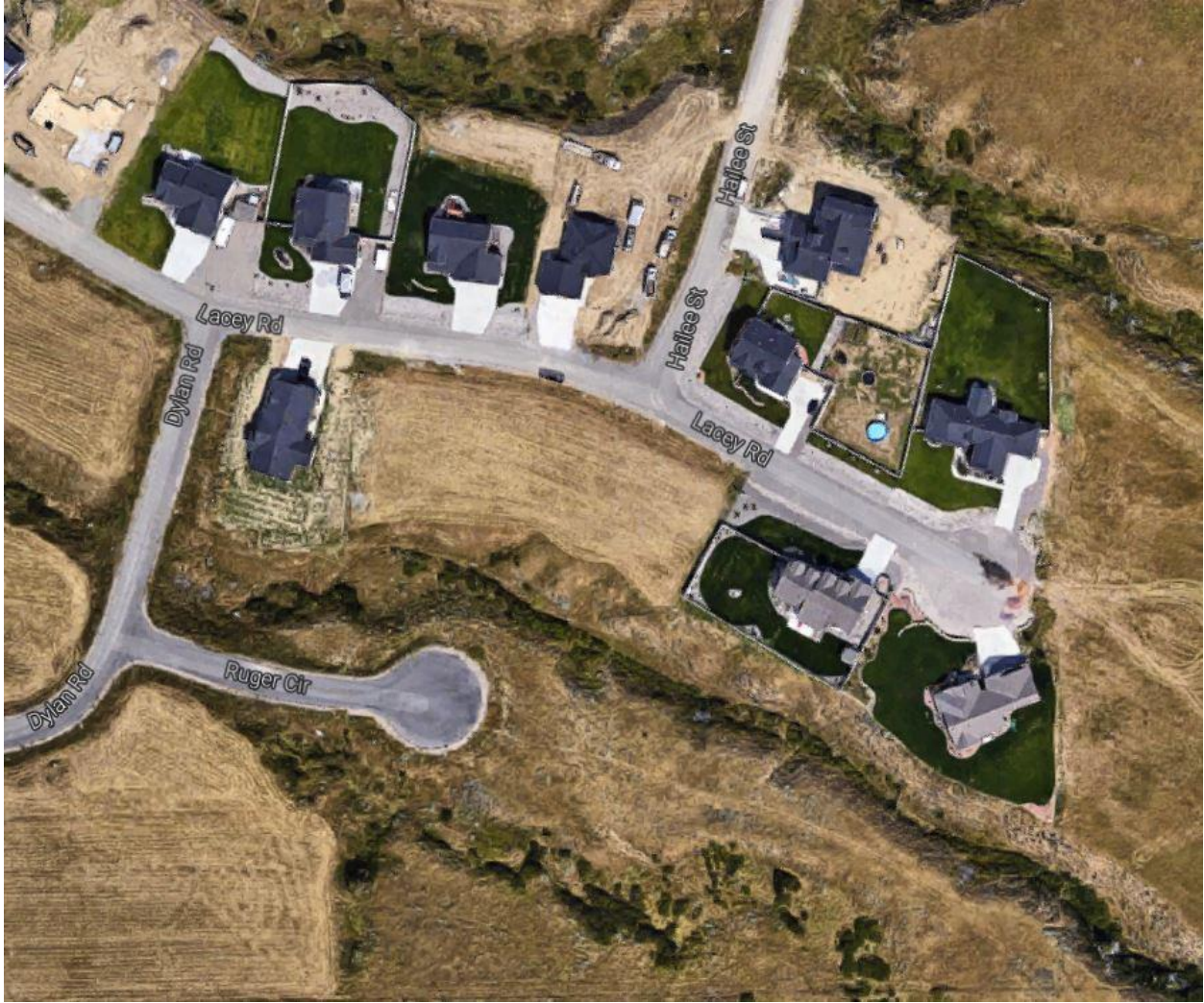
DATE: AUGUST 2008



Lacey Road end in question.



Google image of end of Lacey Road



Aerial Image of a portion of Twin Coulee Subdivision