

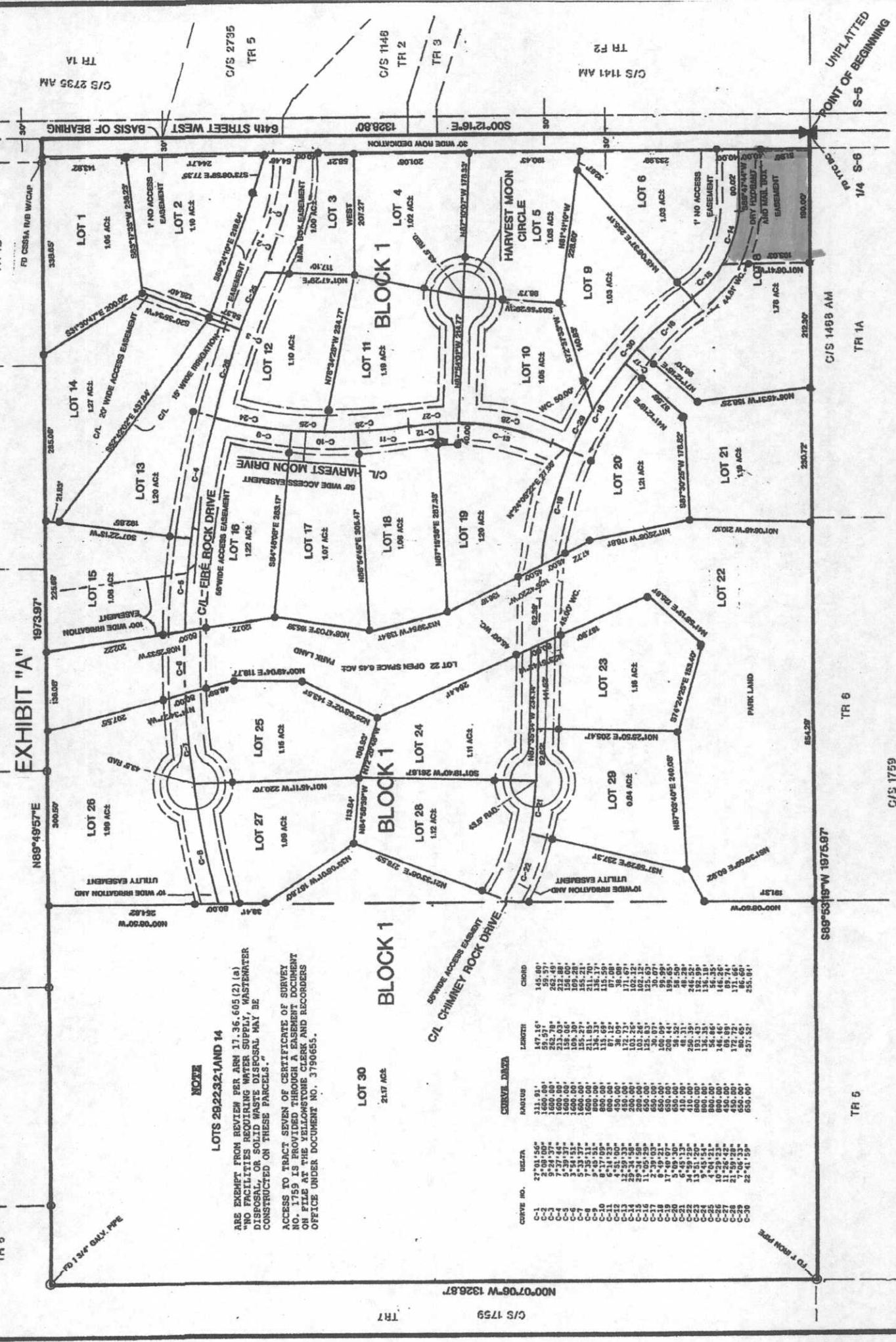
EASE 3796193

FIRE ROCK SUB.

EXHIBIT "A"

C/S 1412 11/16/2016 08:22 AM Pages: 2 of 2 Fees: 24.00
 Jeff Martin Clerk & Recorder, Yellowstone MT
 C/S 1412 AM

THIS CERTIFICATE OF SURVEY HAS BEEN REVIEWED BY THE COUNTY ATTORNEY'S OFFICE AND IS ACCEPTABLE AS TO FORM.



NOTE
 LOTS 28,29,30 AND 14
 ARE EXEMPT FROM REVIEW PER ANN 17.36.605 (2) (a)
 "NO FACILITIES REQUIRING WATER SUPPLY, WASTEWATER
 DISPOSAL, OR SOLID WASTE DISPOSAL MAY BE
 CONSTRUCTED ON THESE PARCELS."

ACCESS TO TRACT SEVEN OF CERTIFICATE OF SURVEY
 NO. 1759 IS PROVIDED THROUGH AN EASEMENT DOCUMENT
 ON FILE AT THE YELLOWSTONE CLERK AND RECORDERS
 OFFICE UNDER DOCUMENT NO. 3790655.

CURVE DATA	RADIUS	LENGTH	CHORD
C-1	311.81	147.16'	145.00'
C-2	270.00	257.32'	255.00'
C-3	1600.00	262.78'	262.70'
C-4	1600.00	213.03'	212.98'
C-5	1600.00	109.30'	109.28'
C-6	1600.00	155.27'	155.21'
C-7	1600.00	131.33'	131.29'
C-8	800.00	115.69'	115.59'
C-9	800.00	97.08'	97.00'
C-10	450.00	172.73'	171.67'
C-11	200.00	103.12'	102.12'
C-12	200.00	135.63'	135.63'
C-13	650.00	30.07'	30.07'
C-14	650.00	208.64'	208.64'
C-15	650.00	48.32'	48.32'
C-16	650.00	58.52'	58.52'
C-17	410.00	208.31'	208.31'
C-18	410.00	193.43'	193.43'
C-19	800.00	136.33'	136.19'
C-20	800.00	146.26'	146.46'
C-21	800.00	89.89'	89.74'
C-22	650.00	162.25'	162.25'
C-23	650.00	257.32'	255.00'

TR 1
 TR 2
 TR 3
 TR 4
 TR 5
 TR 6
 TR 1A
 TR 1B
 TR 1C
 TR 1D
 TR 1E
 TR 1F
 TR 1G
 TR 1H
 TR 1I
 TR 1J
 TR 1K
 TR 1L
 TR 1M
 TR 1N
 TR 1O
 TR 1P
 TR 1Q
 TR 1R
 TR 1S
 TR 1T
 TR 1U
 TR 1V
 TR 1W
 TR 1X
 TR 1Y
 TR 1Z

C/S 1759
 N00°07'06"W 1328.87'