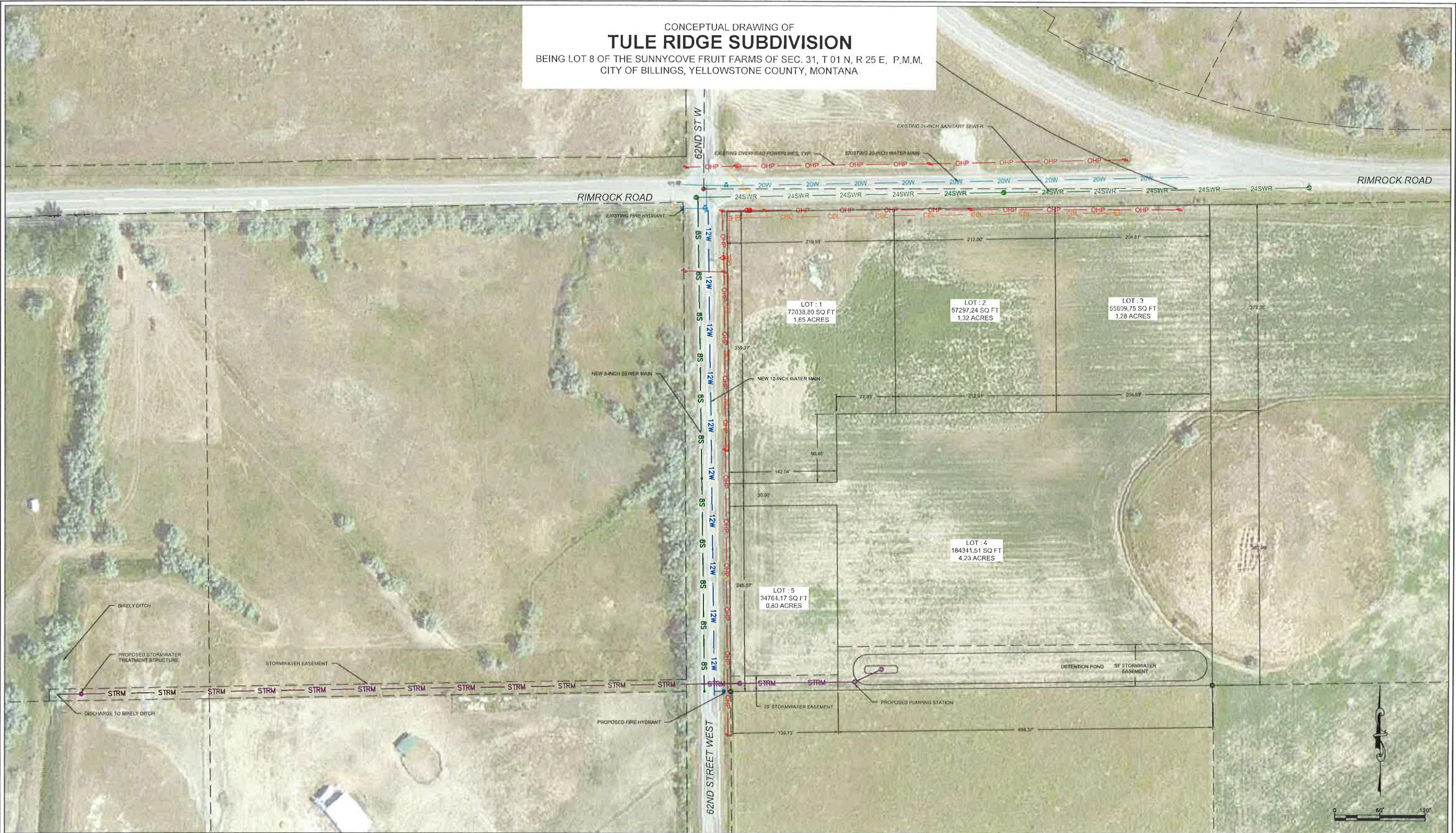


CONCEPTUAL DRAWING OF  
**TULE RIDGE SUBDIVISION**  
 BEING LOT 8 OF THE SUNNYCOVE FRUIT FARMS OF SEC. 31, T 01 N, R 25 E, P.M.M.,  
 CITY OF BILLINGS, YELLOWSTONE COUNTY, MONTANA



OWNER: TULE RIDGE DEVELOPMENTS, LLC  
 EXISTING LAND USE: AGRICULTURAL  
 PROPOSED LAND USE: COMMERCIAL LOTS  
 EXISTING ZONING: COMMUNITY COMMERCIAL  
 PROPOSED ZONING: COMMUNITY COMMERCIAL



7100 COMMERCIAL AVE, SUITE 4  
 BILLINGS, MT 59101  
 OFFICE - 406-384-0080 www.performance-ec.com

JMD  
 DESIGNED BY  
 JMD  
 DRAWN BY  
 9/13/2016  
 DATE  
 QUALITY ASSURANCE  
 BDN  
 CHECKED BY  
 9/13/2016  
 DATE

TULE RIDGE SUBDIVISION

BILLINGS, MT 59106

CONCEPTUAL DRAWING

PROJECT NUMBER  
2016-037

SHEET NUMBER  
1 OF 1

EXHIBIT

1