

# PRELIMINARY PLAT OF SHILOH COMMONS SUBDIVISION

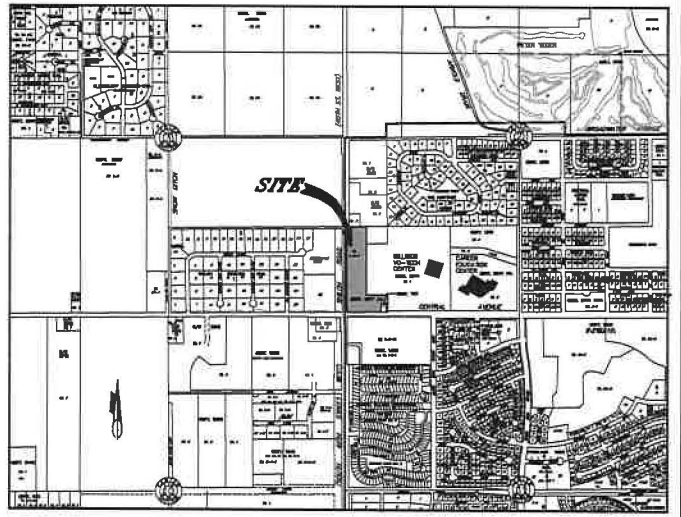
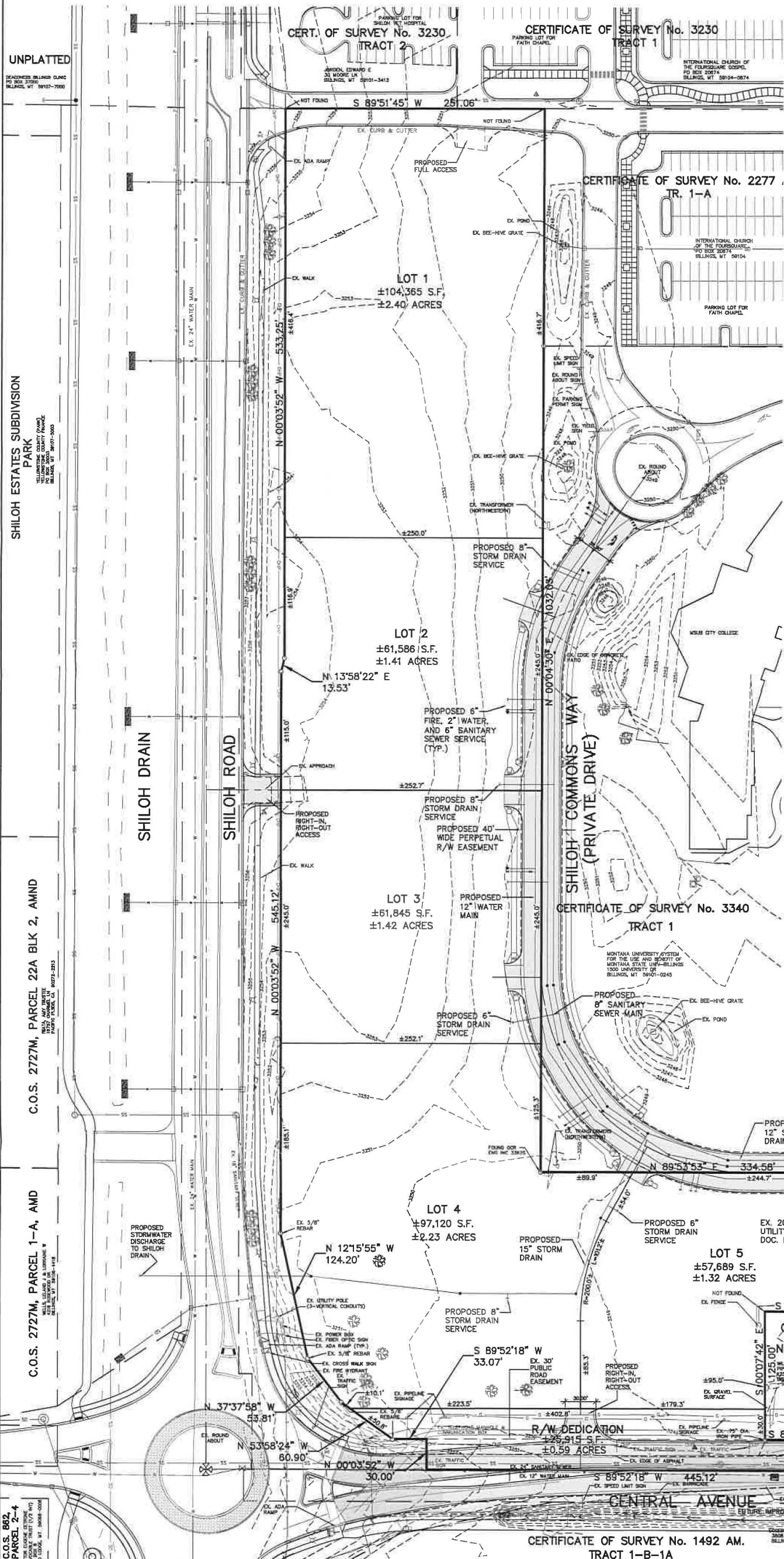
TRACT 1-B-1 OF CERTIFICATE OF SURVEY No. 2277  
BILLINGS, YELLOWSTONE COUNTY, MONTANA

PREPARED FOR : STOCK DEVELOPMENT

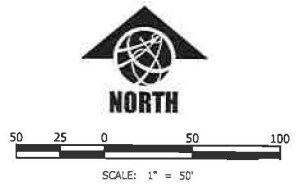
NOVEMBER, 2016

PREPARED BY : SANDERSON STEWART

BILLINGS, MONTANA



VICINITY MAP  
NOT TO SCALE



LEGEND

- FOUND CORNER MONUMENT AS NOTED
- SET CORNER MONUMENT, REBAR WITH CAP
- ⊗ WATER VALVE
- ⊕ FIRE HYDRANT
- ⊙ CURB STOP
- ⊕ FIRE DEPT. CONNECTION
- ⊕ EX. WELL
- ⊕ EX. YARD HYDRANT
- ⊕ SANITARY SEWER MANHOLE
- ⊕ SANITARY SEWER CLEAN OUT
- ⊕ STORM DRAIN MANHOLE
- ⊕ CATCH BASIN
- ⊕ TELEPHONE BOX
- ⊕ TELEPHONE MANHOLE
- ⊕ TELEPHONE PEDESTAL
- ⊕ COMMUNICATIONS BOX
- ⊕ GAS VALVE
- ⊕ POWER POLE
- ⊕ GUYWIRE
- ⊕ LIGHT POLE
- ⊕ POWER MANHOLE
- 3157 — EXISTING GRADE CONTOURS
- W — WATER
- SS — SANITARY SEWER
- SD — STORM DRAIN
- T — TELEPHONE
- G — GAS
- P — POWER
- OHP — OVERHEAD POWER LINE (TYP.)
- T — SIGN
- ⊕ BOLLARD
- ⊕ DECIDUOUS TREE

PLAT DATA

GROSS AREA	=	9.38 ACRES
NET AREA	=	8.79 ACRES
NUMBER OF LOTS	=	5
MINIMUM LOT SIZE	=	1.32 ACRES
MAXIMUM LOT SIZE	=	2.40 ACRES
LINEAL FEET OF STREETS	=	1,210 L.F. (PRIVATE)
PARKLAND REQUIREMENT	=	N/A
PARKLAND DEDICATION	=	N/A
EXISTING ZONING	=	COMMUNITY COMMERCIAL
SURROUNDING ZONING:		
NORTH	=	R9600 & COMMUNITY COMMERCIAL
SOUTH	=	P.U.D. & NEIGHBORHOOD COMMERCIAL
EAST	=	PUBLIC & COMMUNITY COMMERCIAL
WEST	=	P.U.D., R15000 & NEIGHBORHOOD COMM.
EXISTING LAND USE	=	VACANT
PROPOSED LAND USE	=	COMMERCIAL/MULTI-FAMILY RESIDENTIAL

C.O.S. 882, PARCEL 2-4  
NORTH LOCUS CENTER  
100 NORTH LOCUS STREET (1/4 MI. N)  
BILLINGS, MONTANA 59102-0004

CERTIFICATE OF SURVEY No. 1492 AM.  
TRACT 1-B-1A