

Application and Site Plans
Special Review #953 – 4135 Grand Avenue



January 16, 2017

Ms. Nicole Cromwell
Planner II
City of Billings
210 North 27th Street
Billings, MT 59101



RE: Special Review Application
4125 Grand Avenue
Billings, MT 59106
Verizon Wireless Site BIL Zimmer

Dear Ms. Cromwell:

Attached is a City of Billings Special Review Application for property owned by King of Glory Lutheran Church and located at 4125 Grand Avenue in Billings, MT on which Verizon Wireless proposes to install a Wireless Communication Facility. The facility will consist of an 80 foot monopole with equipment cabinets located at the base of the pole in the southwest corner of the lot.

Verizon Wireless needs to increase its capacity in northwestern Billings. Installation of a new tower along Grand Avenue will increase capacity and coverage in the Billings area, and specifically the growing area surrounding this street.

Thank you for your cooperation and please call me if you have any questions regarding this request.

Sincerely,

A handwritten signature in blue ink, appearing to read "Kevin T. Howell".

Kevin T. Howell
President, Digital Skylines, Inc.
Representing Verizon Wireless



**City of Billings
Special Review Application
Grand Avenue / Verizon Wireless site BIL Zimmer**

Supplemental Information Enclosed:

1. Answer the following questions:
 - a. In what ways is your proposal consistent with the goals and policies of the adopted Growth Policy?

The proposed Verizon Wireless facility is consistent with the goals and policies of the adopted Growth Policy in three ways:

 - i. Public health and safety and emergency service response are critical to the well-being of Billings' residents, businesses, and visitors – Today nearly half of homes have only wireless service and no landline. This means that they must rely on their wireless service to call 911 or make other emergency calls. As such, it is more important than ever that cities have strong and reliable wireless service.
 - ii. Neighborhoods that are safe and attractive and provide essential services are much desired – Home buyers are actively seeking neighborhoods with dependable and consistent wireless service. The lack of a strong signal can deter them from the area.
 - iii. Economic Development – Wireless coverage and capacity is a necessity in today's world. Consumers and businesses expect their phone and internet connection to work everywhere. This site is intended to serve northwestern Billings including the commercial businesses along Grand Avenue as well as the surrounding residential communities. In order to attract and keep businesses in the area, Billings must have accessible and reliable wireless service.
 - b. Why is there a need for the intended use of the property at this location?

Verizon Wireless has determined that the area between Grand Avenue and Rimrock Road around S 40th St is growing short on wireless capacity on the Verizon Wireless network. A lack of capacity will eventually block calls, delay emergency responses, and slow down wireless data rates.



According to the most recent national study, approximately one half of homes rely solely on wireless phones. This means that over two in every five homes are relying on wireless service to reach 911.

Full disclosure: Verizon Wireless is building a 4G LTE site, which means voice calls will be carried over their LTE network. This is a change and will require customers to have a device capable of advanced calling.

What is a 4G LTE site? A Verizon Wireless 4G LTE cell site uses the latest technology to carry both voice and data. Voice service is provided over VOLTE or Voice Over Long Term Evolution technology through a service Verizon Wireless calls Advanced Calling 1.0.

Advanced Calling offers high-definition or HD voice and video calling. To complete calls on this new cell site, customers' phones must be capable of Advanced Calling and that feature must be activated in the phone itself. Both customers on a call must be served by 4G LTE and have the Advanced Calling feature activated to experience HD voice and video service. Customers with older 1X, 3G or 4G devices without Advanced Calling will not experience a change in voice service.

- c. How will the public interest be served if this application is approved?

Verizon Wireless is the largest wireless carrier in the United States. The Verizon Wireless customers, including the City of Billings, rely on Verizon Wireless to continually invest in wireless infrastructure to prevent reduced functionality as the demand for wireless services (smartphones, tablets, etc.) increases. By locating this site immediately adjacent to 70' tall power lines, Verizon Wireless is not further disrupting the viewsheds. The views in this area are already compromised by the power lines.

- d. Prepare a written statement addressing what is intended to be done with the property, including new construction or change in the use of the property, and why the special review is being sought.

Verizon Wireless is proposing an 80' monopole in the southwestern corner of the lot owned by King of Glory Lutheran Church at 4135 Grand Avenue. A Special Review is required because the parcel is zoned R96.

View 1



Existing



Bill Zimmer
THIS PHOTOSIM IS INTENDED TO BE
AN APPROXIMATE VISUAL REPRESENTATION OF THIS PROJECT



View 1



Proposed



THIS PHOTOSIM IS INTENDED TO BE
AN APPROXIMATE VISUAL REPRESENTATION OF THIS PROJECT

BIL Zimmer

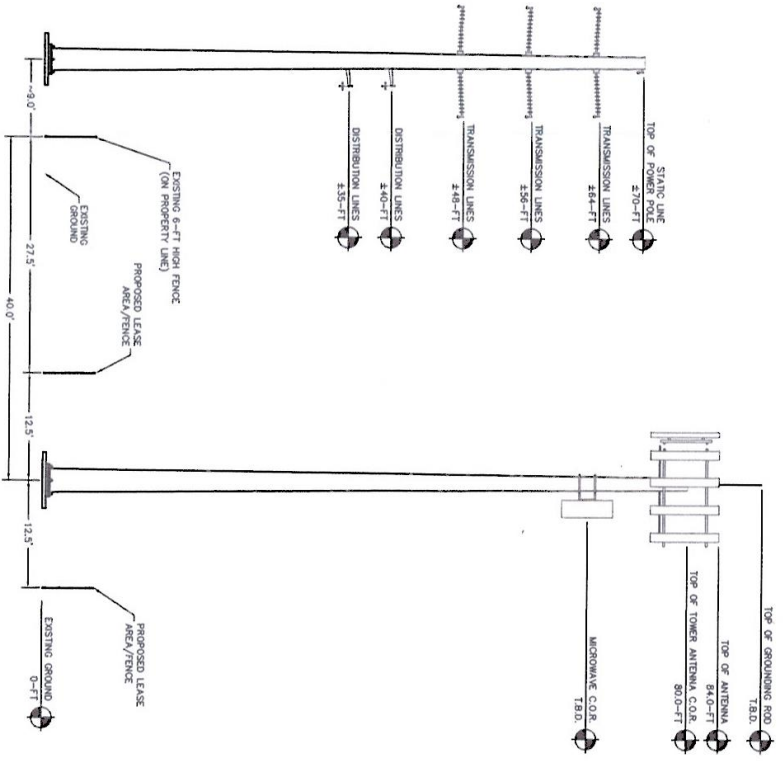


TOWER HEIGHT NOTE:
 ALL TOWER ELEVATIONS ARE MEASURED FROM BOTTOM OF BASE PLATE TO TOP OF ANTENNA C.O.R. IS ABOVE GRADE.

TOWER FINISH NOTE:
 THE TOWER SHALL HAVE A NON-REFLECTIVE GALVANIZED GRAY FINISH.

KEY:

C.O.R.	=	CENTER OF ROTATION
A.L.	=	ATTACHMENT LEVEL
B.T.	=	BOTTOM TP LEVEL
T.T.	=	TOP TP LEVEL
A.G.L.	=	ABOVE GRADE LEVEL
B.O.B.P.	=	BOTTOM OF BASE PLATE



DESIGNED BY:
 2729 BOZZMAN AVE
 WHEATON, MONTANA 59601

DESIGNED BY:
 3130 COUNTRY CIRCLE
 BOZEMAN, MT 59718
 406.552.2222
 www.allied-engineering.com

Civil Engineering
Geotechnical Engineering
Land Surveying

REVISIONS:

REV	DESCRIPTION	DATE	BY	CHK
A	PERMITS - NOT FOR CONSTRUCTION	11/29/16	LMG	LMG

THE INFORMATION IN THESE PLANS IS THE PROPERTY OF ALLIED ENGINEERING AND SURVEYING, INC. (AES) AND IS NOT TO BE REPRODUCED, COPIED, OR TRANSMITTED IN ANY FORM OR BY ANY MEANS, ELECTRONIC OR MECHANICAL, INCLUDING PHOTOCOPYING, RECORDING, OR BY ANY INFORMATION STORAGE AND RETRIEVAL SYSTEM, WITHOUT THE WRITTEN PERMISSION OF AES. ENGINEERING SERVICES ARE PROVIDED BY AES.

SITE NAME:
 BIL ZIMMER

SITE ADDRESS:

SHEET TITLE:
 ELEVATIONS

SHEET NUMBER:
 C-3

ISSUED DATE:
 11/29/16