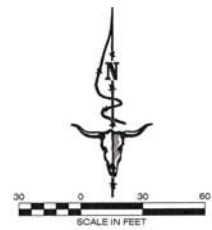


PRELIMINARY PLAT OF EVANS SUBDIVISION

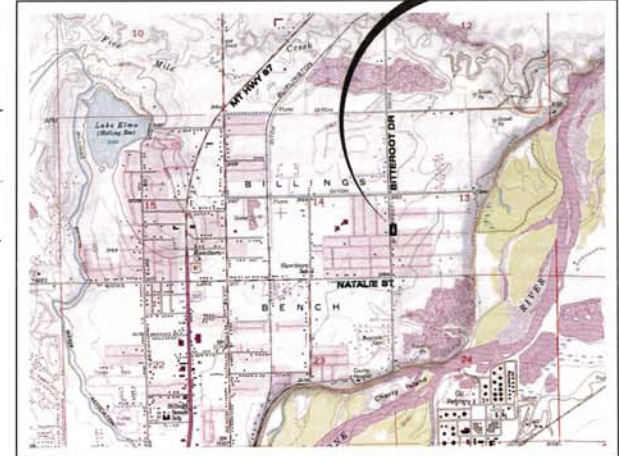
(SUBDIVISION OF BLOCK 1, LOT 7, SPARTAN ACREAGE TRACTS,
LOCATED IN THE SW1/4 OF SECTION 13, T.01N., R.26E., P.M.M.,
YELLOWSTONE COUNTY, MONTANA)

NOTE:
PRELIMINARY PLAT, NOT FOR SURVEY OR CONSTRUCTION USE.

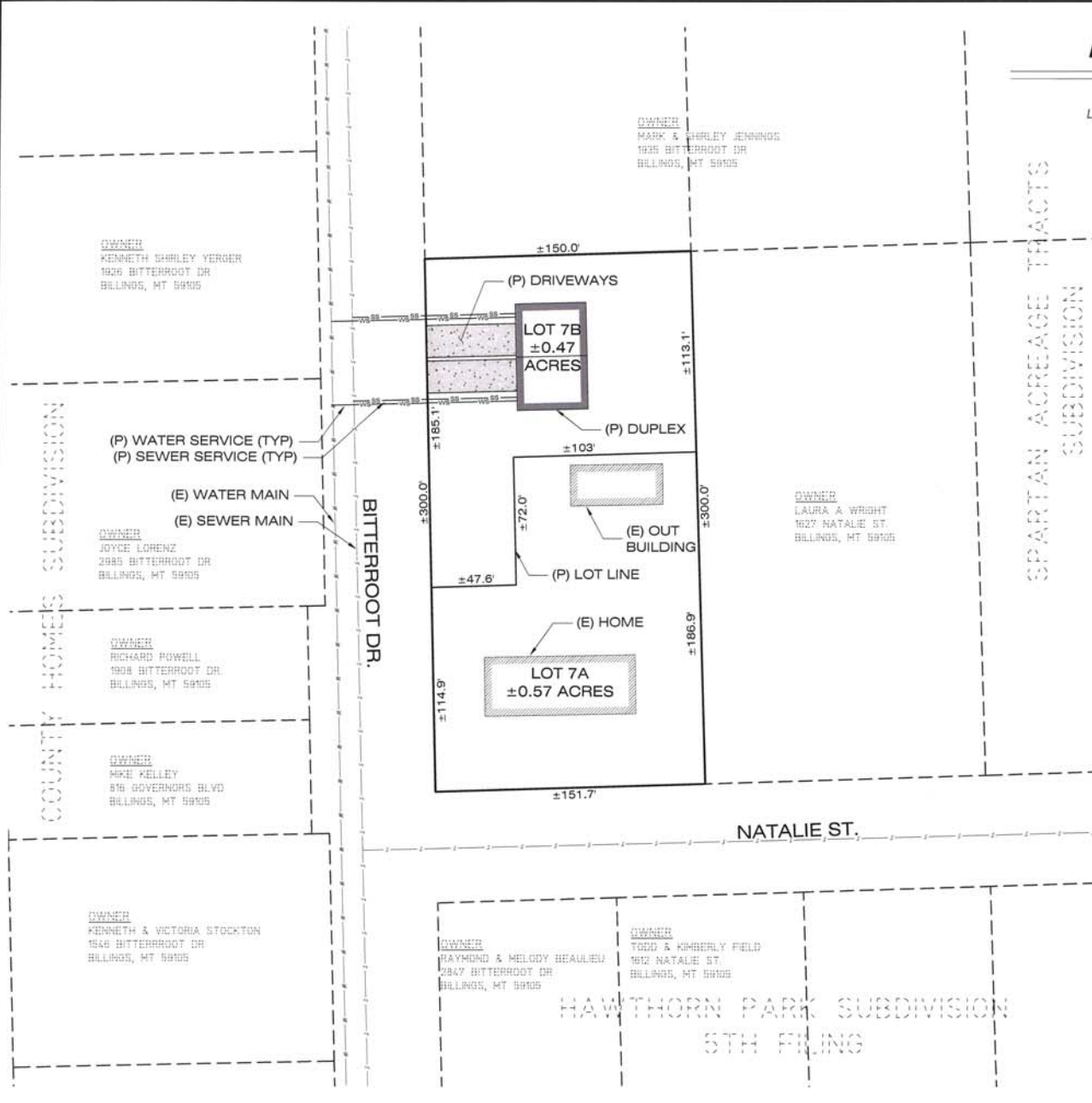
PLAT DATA	
GROSS AREA	= 45,247 SF
NET AREA	= 45,247 SF
NUMBER OF LOTS	= 2
MINIMUM LOT SIZE	= 20,473 SF
MARKED LOT SIZE	= 24,774 SF
LINEAL FEET OF STREETS	= NA
PARKLAND REQUIREMENTS	= NA
EXISTING ZONING	= R70
SUPPLEMENTARY ZONING	
NORTH	= R70
SOUTH	= R70
EAST	= R70
WEST	= R70
EXISTING LAND USE	= RESIDENTIAL
PROPOSED LAND USE	
LOT 7A	= RESIDENTIAL DUPLEX
LOT 7B	



VICINITY MAP



BILLINGS, YELLOWSTONE COUNTY



TERRITORIAL LANDWORKS, INC.
CIVIL ENGINEERING • SURVEYING • LAND USE CONSULTING
1000 N. UNIVERSITY AVENUE
BILLINGS, MONTANA 59102
PHONE: 406.251.4143
FAX: 406.251.4224

DATE	_____
REVISIONS	_____
DESIGNED BY	_____
DRAFTED BY	_____
CHECKED BY	_____
DATE	3/11/17

LOCATION: 1605 NATALIE ST., BILLINGS, MONTANA
SPARTAN ACREAGE TRACTS, BLOCK 1, LOT 7
SEC. 13, T.01N., R.26E., YELLOWSTONE COUNTY
PREPARED FOR: NORMAN & CATHERINE EVANS

CATHY EVANS
EVANS SUBDIVISION
PROPOSED LAYOUT

PROJECT NO.: 17-4456
SHEET: 1 OF 1
PRELIMINARY