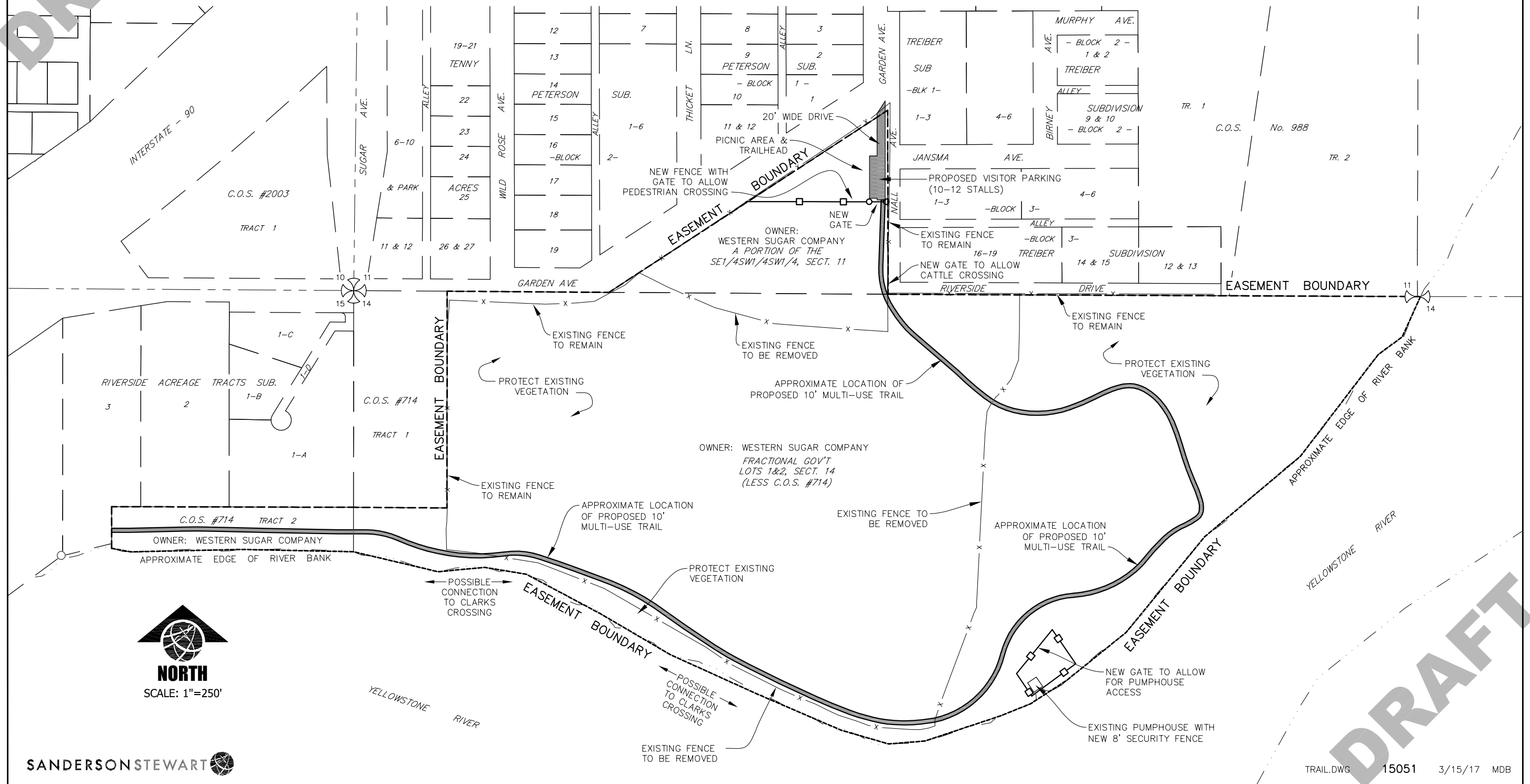


EXHIBIT A

TRAIL & RECREATION EASEMENT

BEING TRACT 2 OF C.O.S. 714, A PORTION OF SE1/4SW1/4SW1/4 OF SECTION 11, AND GOV'T LOT 1 & FRACTIONAL GOV'T LOT 2 OF SECTION 14 (LESS C.O.S. 714), T. 1 S., R. 26 E., P.M.M., YELLOWSTONE COUNTY, MONTANA



P:\15051_Western_Sugar_Clarks_Crossing_Trail_PMICADD_C3DIBASE_DWG\TRAIL.dwg, EXHIBIT A 11X17, 3/15/2017 11:04:18 AM, mbertram, 1:1