

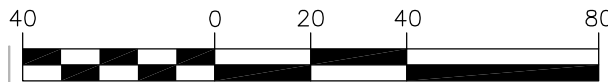
EXHIBIT B



Line Table		
Line #	Bearing	Distance
L1	S89°55'37"E	11.51'
L2	S31°13'10"W	6.53'
L3	S76°22'07"W	4.84'
L4	S45°35'41"W	2.85'
L5	S14°49'16"W	4.72'
L6	N0°46'06"W	13.30'
L7	S89°55'37"E	34.85'

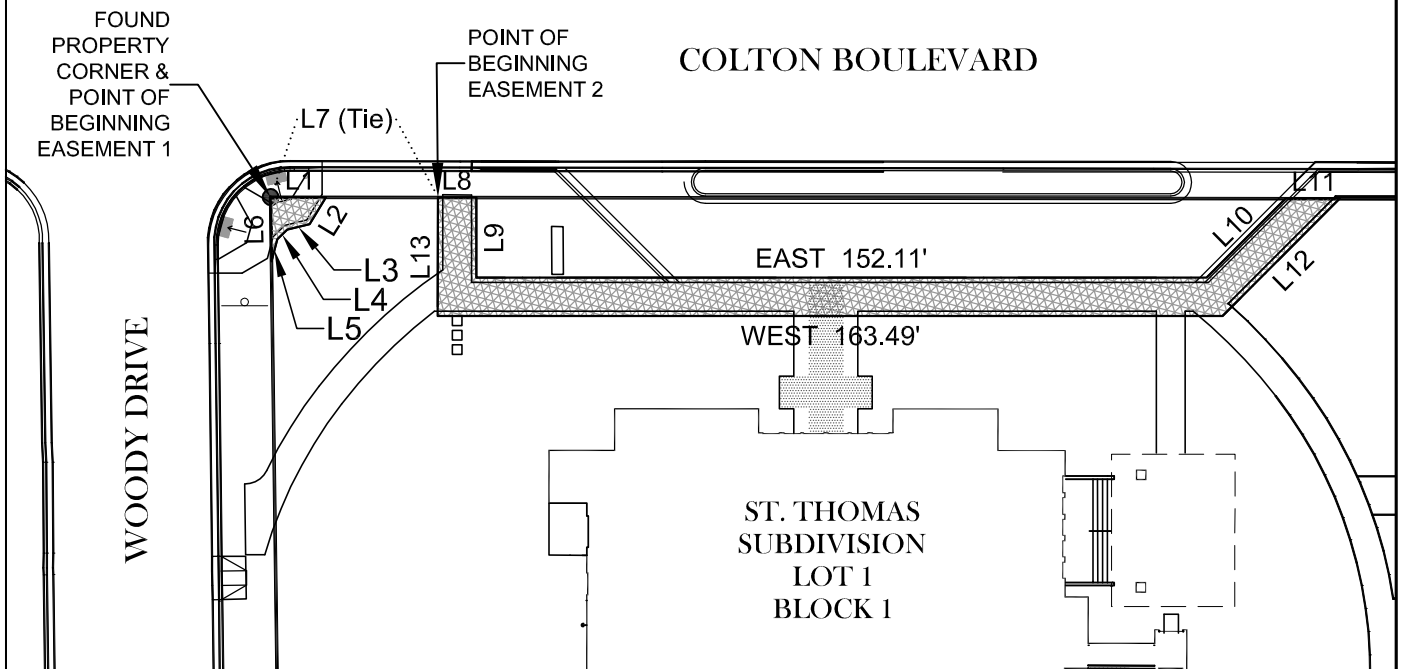
Line Table		
Line #	Bearing	Distance
L8	S89°55'37"E	8.00'
L9	SOUTH	16.68'
L10	N45°00'00"E	23.28'
L11	S89°55'37"E	11.30'
L12	S45°00'00"W	34.57'
L13	N0°09'52"E	24.69'


GRAPHIC SCALE



(IN FEET)
1 inch = 40 ft.

ALLEY



Drawn By <u>CDK</u> Checked By <u>GSB</u> Date <u>4/24/17</u> CTA # <u>STTHOMAS_2015</u> Cad File: <u>STNOSV10</u>	 LIVINGSTON, MT (406)222-0104 Fax (406)222-1007	PUBLIC SIDEWALK EASEMENTS GRANTOR: ROMAN CATHOLIC BISHOP OF GREAT FALLS GRANTEE: CITY OF BILLINGS	EXHIBIT B REF SHEET# SHEET#
--	---	---	--