

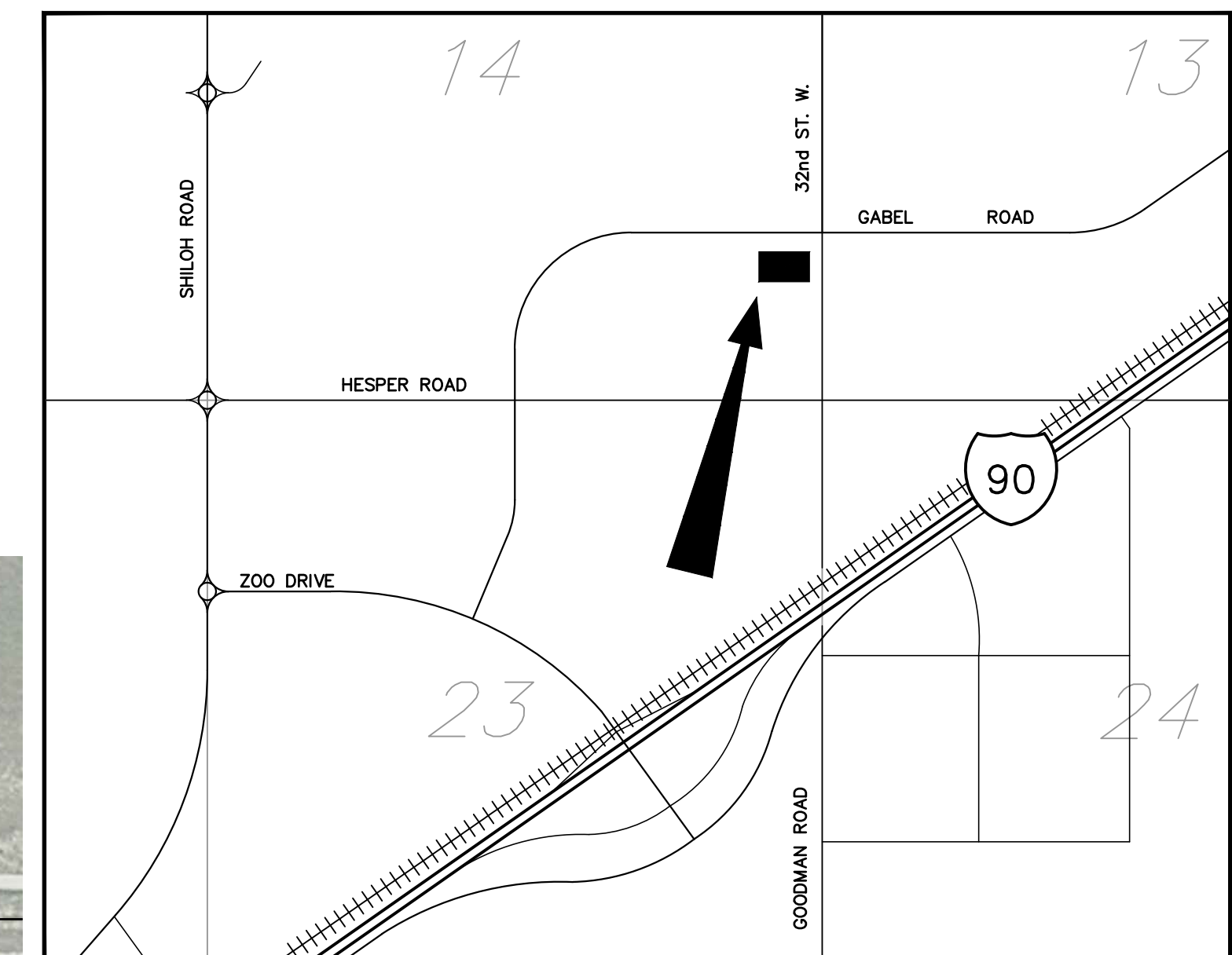
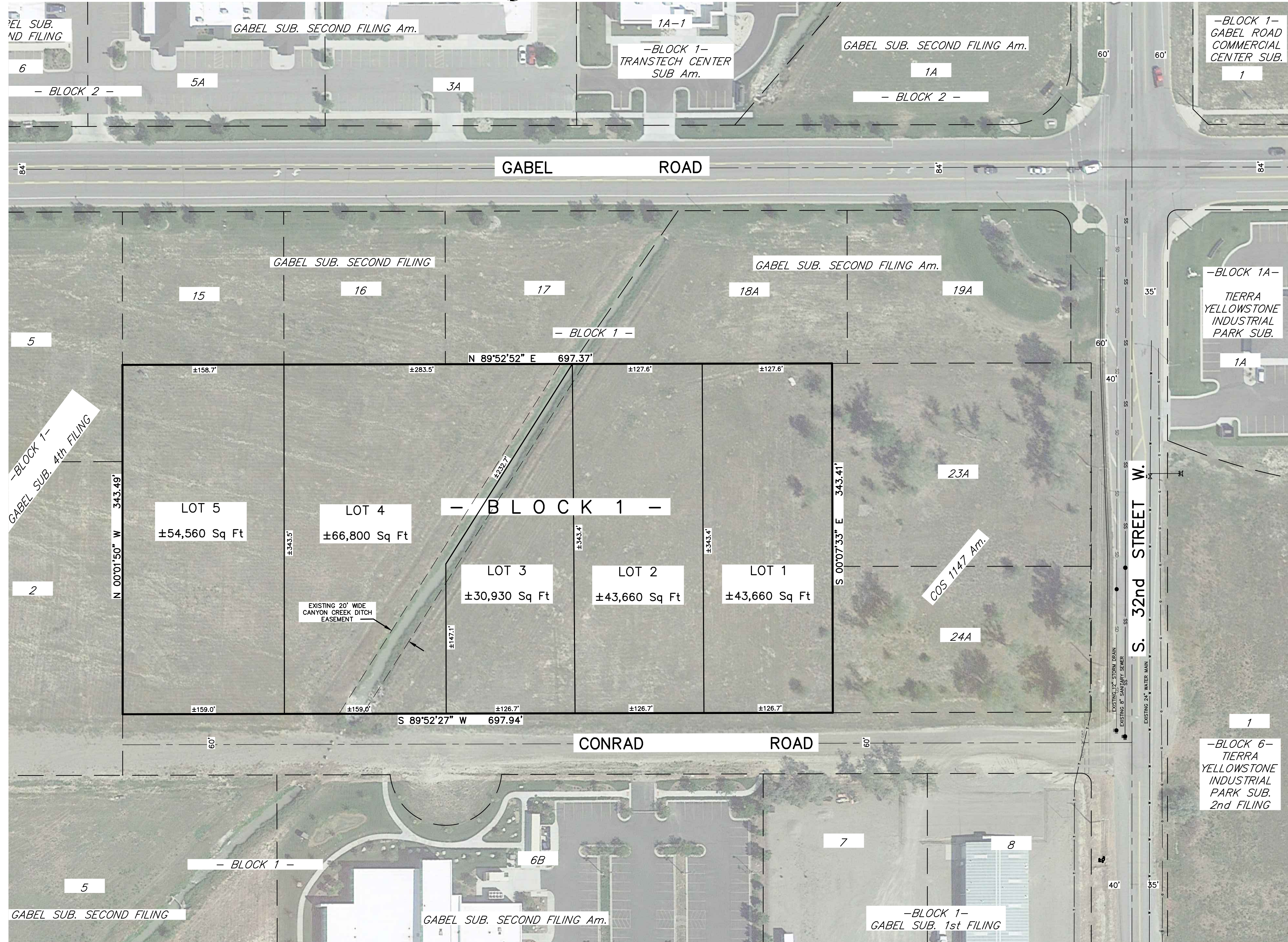
CONCEPT PROPOSED PLAT OF
TIERRA YELLOWSTONE SUBDIVISION
 BEING TRACT 22A OF AMENDED CERTIFICATE OF SURVEY No 1147
 SITUATED IN THE SE1/4 OF SECTION 14, T. 1 S., R. 25 E., P.M.M.
 IN THE CITY OF BILLINGS, YELLOWSTONE COUNTY, MONTANA

PREPARED FOR : RED LODGE INVESTMENT, LLC

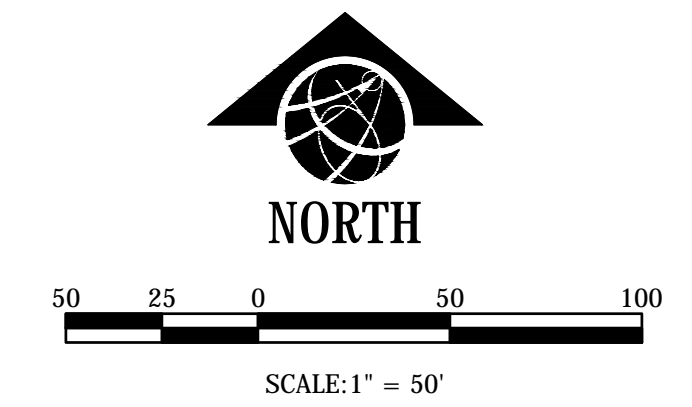
APRIL 2017

PREPARED BY : SANDERSON STEWART

BILLINGS, MONTANA



VICINITY MAP
 NOT TO SCALE



PLAT DATA

GROSS AREA	= 239,607 Sq Ft or 5.501 Acres
NET AREA	= 239,607 Sq Ft or 5.501 Acres
NUMBER OF LOTS	= 5
MINIMUM LOT SIZE	= ±30,930 Sq Ft or 0.71 Acre
MAXIMUM LOT SIZE	= ±66,800 Sq Ft or 1.53 Acres
LINEAL FEET OF STREETS	= 0
PARKLAND REQUIREMENT	= NONE; NON-RESIDENTIAL
EXISTING ZONING	= CONTROLLED INDUSTRIAL
SURROUNDING ZONING:	
NORTH	= CONTROLLED INDUSTRIAL
SOUTH	= CONTROLLED INDUSTRIAL
EAST	= CONTROLLED INDUSTRIAL
WEST	= CONTROLLED INDUSTRIAL
EXISTING LAND USE	= VACANT
PROPOSED LAND USE	= FUTURE COMPATIBLE DEVELOPMENT

P:\0004_02_C08_1147_2A_Conrad_Rd_4th_Filing_11.05.17.MXD