

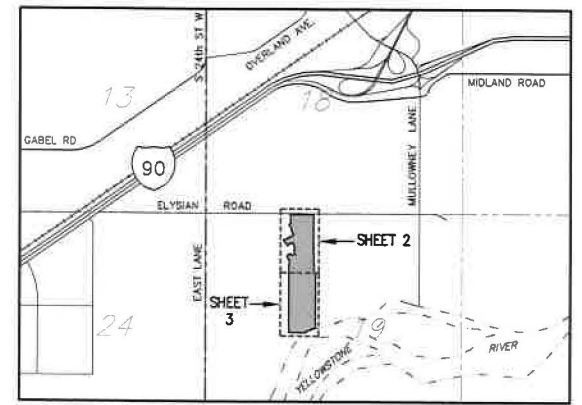
PLAT OF  
**ANNAFELD SUBDIVISION, FIRST FILING**  
 BEING LOT 1, BLOCK 1 OF ADAM AND MOLLIE WALTER SUBDIVISION, FIRST FILING  
 & TRACT 1 OF CERTIFICATE OF SURVEY No. 3594  
 SITUATED IN THE NW1/4 OF SECTION 19, T. 1 S., R. 26 E., P.M.M.,  
 IN THE CITY OF BILLINGS, YELLOWSTONE COUNTY, MONTANA

PREPARED FOR : McCALL DEVELOPMENT, INC.

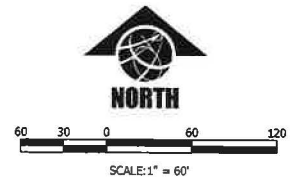
JULY, 2016

PREPARED BY : SANDERSON STEWART

BILLINGS, MONTANA



VICINITY MAP  
 NOT TO SCALE



**BASIS OF BEARING:** THE BASIS OF BEARINGS FOR THIS SURVEY HAS BEEN DERIVED FROM GPS OBSERVATIONS AND IS BASED ON A NAD 83, LAMBERT CONFORMAL CONIC, SINGLE PARALLEL, LOW DISTORTION PROJECTION FOR THE CITY OF BILLINGS; HAVING A POINT OF ORIGIN AT 45°47'00"N LATITUDE AND 105°25'00"W LONGITUDE WITH A SCALE FACTOR OF 1.0001515. DISTANCES ARE GRID, INTERNATIONAL FEET. THE GRID TO GROUND COMBINED SCALE FACTOR AT THE N1/4 CORNER, SECT. 19, T1S, R26E, PMM, IS 1.00000198; THE CONVERGENCE ANGLE IS -0°06'27".

- FOUND SURVEY MONUMENT, REBAR & CAP MARKED "SANDERSON STEWART", OR AS NOTED
- SET 5/8" X 18" REBAR WITH CAP MARKED WITH THE LICENSE NUMBER OF THE UNDERSIGNED LAND SURVEYOR AND "SANDERSON STEWART"
- SET INTERSECTION MONUMENT, 5/8" X 18" REBAR WITH CAP MARKED WITH THE LICENSE NUMBER OF THE UNDERSIGNED LAND SURVEYOR AND "SANDERSON STEWART BILLINGS MT". WILL BE REPLACED WITH BRASS CAP MONUMENT BOX UPON COMPLETION OF STREET IMPROVEMENTS.

**NOTE:** ALL CURVES ARE TANGENT AND ALL PROPERTY LINES INTERSECTING CURVES ARE RADIAL UNLESS OTHERWISE NOTED.

Curve #	Delta	Radius	Length	Chord Bearing	Chord Distance
C1	71°2'23"	328.00'	41.25'	N 01°26'18" W	41.23'

Line #	Bearing	Distance	Line #	Bearing	Distance
L1	N 89°58'09" E	0.75'	L10	N 18°09'45" W	63.62'
L2	N 56°25'27" W	13.98'	L11	N 78°00'34" E	16.58'
L3	S 77°50'15" W	21.39'	L12	N 29°55'24" E	15.26'
L4	N 77°50'15" E	18.52'	L13	S 42°06'39" W	48.48'
L5	N 30°50'15" E	13.64'	L14	N 47°43'52" W	14.76'
L6	N 18°09'45" W	18.52'	L15	S 89°50'15" W	20.20'
L7	S 18°09'45" E	22.44'	L16	N 89°50'15" E	18.50'
L8	S 59°09'45" E	14.63'	L17	N 44°50'15" E	14.14'
L9	N 77°50'15" E	87.78'			

Line #	Bearing	Distance	Line #	Bearing	Distance	Line #	Bearing	Distance
L18	N 73°50'15" E	20.31'	L38	S 00°07'22" E	15.42'	L58	N 89°58'09" E	1.78'
L19	N 00°07'22" W	7.84'	L39	S 89°52'38" W	19.40'	L59	S 44°43'03" W	14.10'
L20	N 45°07'22" W	14.14'	L40	N 33°28'02" E	14.30'	L60	S 45°16'57" E	14.18'
L21	S 89°52'38" W	26.45'	L41	S 40°42'20" W	15.29'			
L22	N 00°07'22" W	7.84'	L42	N 49°17'40" W	14.59'			
L23	N 44°52'38" E	14.14'	L43	S 59°09'45" E	14.63'			
L24	N 89°52'38" E	50.43'	L44	S 18°09'45" E	13.45'			
L25	S 45°04'37" E	14.15'	L45	S 89°58'09" W	44.11'			
L26	S 44°52'38" W	14.14'	L46	S 26°14'33" W	24.92'			
L27	S 89°52'38" W	46.33'	L47	N 42°28'30" E	13.51'			
L28	S 45°07'22" E	14.14'	L48	N 47°34'15" W	14.73'			
L29	S 44°52'38" W	14.14'	L49	S 38°18'05" E	28.54'			
L30	S 45°07'22" E	14.14'	L50	N 89°52'38" E	49.64'			
L31	N 00°07'22" W	21.73'	L51	S 44°52'38" W	14.14'			
L32	S 03°46'19" W	23.69'	L52	N 45°16'57" W	14.18'			
L33	N 41°13'41" W	14.14'	L53	S 42°25'45" W	18.23'			
L34	S 86°52'38" W	3.17'	L54	S 47°31'30" E	14.74'			
L35	S 89°58'09" E	23.00'	L55	S 36°25'23" E	57.78'			
L36	N 44°43'03" E	14.10'	L56	S 30°50'15" W	13.64'			
L37	S 45°07'22" E	14.14'	L57	S 77°50'15" W	28.48'			

Radial #	Bearing
R61	S 84°57'31" W
R62	N 80°11'44" E
R63	N 60°19'51" E
R64	S 57°08'48" W
R65	S 84°09'29" W
R66	N 62°27'22" E
R67	N 63°37'51" E
R68	N 63°58'12" E
R69	N 70°21'22" E
R70	S 87°23'21" E
R71	N 87°38'05" W
R72	S 86°02'32" W
R73	N 83°53'02" E
R74	N 79°50'36" E
R75	S 88°33'32" E
R76	S 86°42'28" E
R77	N 88°02'38" W
R78	S 86°42'49" W
R79	N 82°38'39" E
R80	N 87°13'58" E
R81	S 88°08'50" W
R82	S 56°11'55" W
R83	N 61°05'03" E

Curve #	Delta	Radius	Length
C2	2°07'36"	272.00'	10.10'
C3	3°08'23"	272.00'	14.75'
C4	5°59'36"	328.00'	34.31'
C5	3°53'41"	228.00'	15.50'
C6	3°53'41"	272.00'	18.49'
C7	3°53'41"	172.00'	11.69'
C8	3°53'41"	328.00'	22.30'
C9	4°01'03"	272.00'	19.07'
C10	2°32'10"	328.00'	14.52'
C11	3°46'01"	328.00'	21.55'
C12	7°13'59"	272.00'	34.34'
C13	3°58'49"	328.00'	22.80'
C14	8°16'23"	272.00'	29.78'
C15	49°22'58"	22.00'	18.98'

Curve #	Delta	Radius	Length
C16	1°38'17"	500.00'	14.29'
C17	8°55'49"	300.00'	36.28'
C18	3°53'41"	200.00'	13.60'
C19	3°53'41"	300.00'	20.39'
C20	8°16'23"	300.00'	32.85'
C21	49°19'09"	50.00'	43.04'

