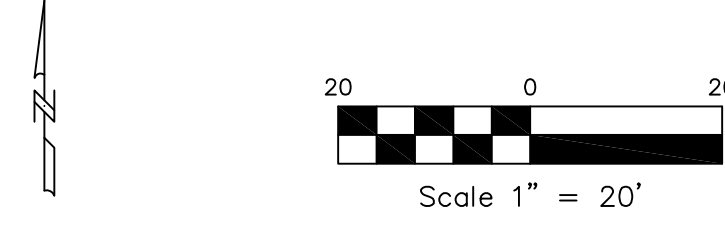


PRELIMINARY PLAT OF SANCTUARY CANYON SUBDIVISION, 1st FILING

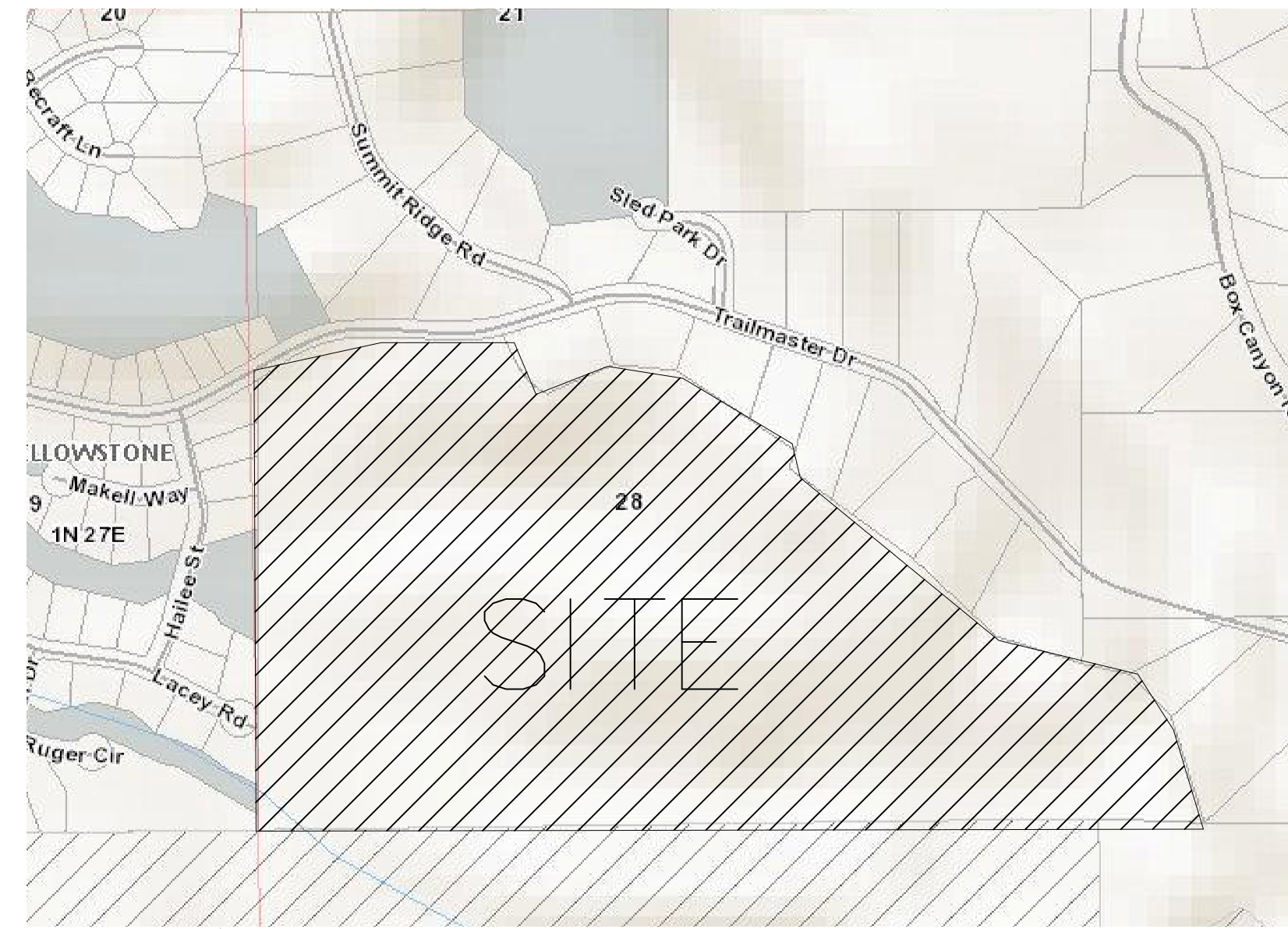
S28, T01 N, R27 E, FRAC N2 (LESS NWSWNE, EMERALD HILLS 2ND & 3RD &
EMERALD HILLS WESTGATE 2ND &
C/S 2674 AMD & EMERALD HILLS ACRG TR SUB 5TH), P.M.M.
YELLOWSTONE COUNTY, MONTANA

PREPARED FOR: SUPERIOR CONSTRUCTION
SURVEYOR: NORTH STAR LAND SERVICES, P.C.
ENGINEER: BLUELINE ENGINEERING LLC
NOVEMBER, 2016
BILLINGS, MONTANA



SUBDIVISION DETAILS:

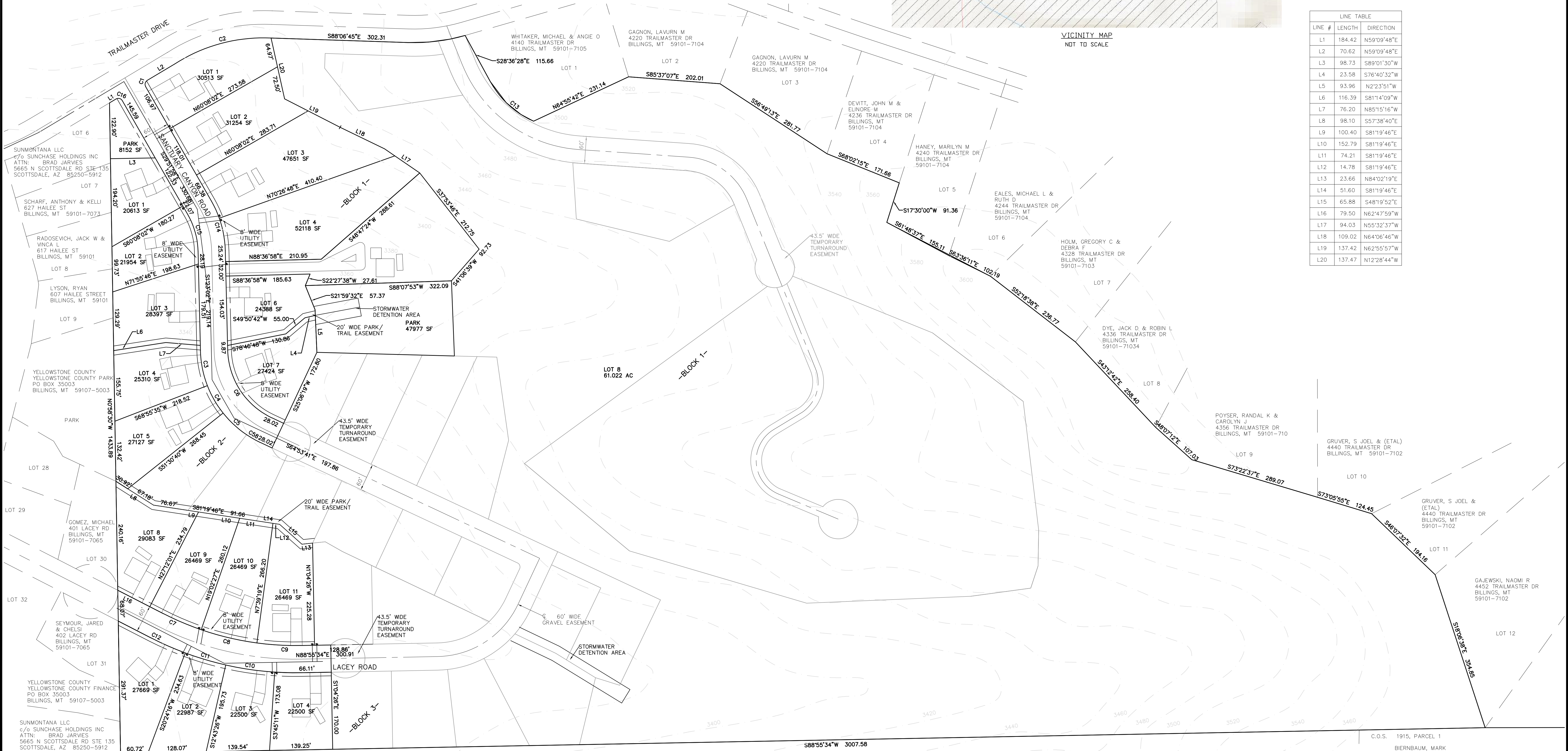
GROSS AREA = 77.917 ACRES
NET AREA = 74.955 ACRES
ROAD AREA = 1.673 ACRES
PARK AREA = 1.289 ACRES
NUMBER OF LOTS = 20
MINIMUM LOT SIZE = 0.517 ACRES
MAXIMUM LOT SIZE = 61.022 ACRES
EXISTING ZONING = NONE
SURROUNDING ZONING = NONE
NORTH = NONE
SOUTH = NONE
EAST = NONE
WEST = NONE
EXISTING LAND USE = VACANT
PROPOSED LAND USE = RESIDENTIAL



VICINITY MAP
NOT TO SCALE

CURVE TABLE					
CURVE #	ARC LENGTH	RADIUS	DELTA	CHORD BEARING	CHORD LENGTH
C1	15.54	10.00	89°01'46"	S14°38'55"W	14.02
C2	223.43	359.25	35°38'06"	S74°55'59"W	219.85
C3	79.04	230.00	19°41'24"	N11°13'43"W	78.65
C4	69.91	230.00	17°24'55"	N29°46'53"W	69.64
C5	70.71	230.00	17°36'51"	N47°17'46"W	70.43
C6	188.44	170.00	63°30'39"	S33°08'21"E	178.94
C7	90.57	636.00	8°09'35"	N66°52'46"W	90.50
C8	126.38	636.00	11°23'07"	N76°39'07"W	126.17
C9	96.90	636.00	8°43'45"	N86°42'33"W	96.80
C10	108.97	696.00	8°58'15"	S81°45'41"E	108.86
C11	93.30	696.00	7°40'49"	S73°26'09"E	93.23
C12	82.55	696.00	6°47'45"	S66°11'51"E	82.50
C13	131.85	200.00	37°46'22"	S47°29'39"E	129.48
C14	72.94	230.00	18°10'10"	N10°28'07"W	72.63
C15	84.51	170.00	28°28'56"	N15°37'30"W	83.64
C16	15.88	10.00	90°58'14"	N75°21'05"W	14.26

LINE TABLE		
LINE #	LENGTH	DIRECTION
L1	184.42	N59°09'48"E
L2	70.62	N59°09'48"E
L3	98.73	S89°01'30"W
L4	23.58	S76°40'32"W
L5	93.96	N22°33'51"W
L6	116.39	S81°14'09"W
L7	76.20	N85°15'16"W
L8	98.10	S57°38'40"E
L9	100.40	S81°19'46"E
L10	152.79	S81°19'46"E
L11	74.21	S81°19'46"E
L12	14.78	S81°19'46"E
L13	23.66	N84°02'19"E
L14	51.60	S81°19'46"E
L15	65.88	S48°19'52"E
L16	79.50	N62°47'59"W
L17	94.03	N55°32'37"W
L18	109.02	N64°06'46"W
L19	137.42	N62°55'57"W
L20	137.47	N12°28'44"W



C.O.S. 1915, PARCEL 1
BIERNBAUM, MARK
14700 SAWYER RANCH RD
DRIPPING SPGS, TX
78620-3998

FIRST PRESBYTERIAN
CHURCH
2420 13TH ST W
BILLINGS, MT 59102-2428

C.O.S. 2827, PARCEL 1b