

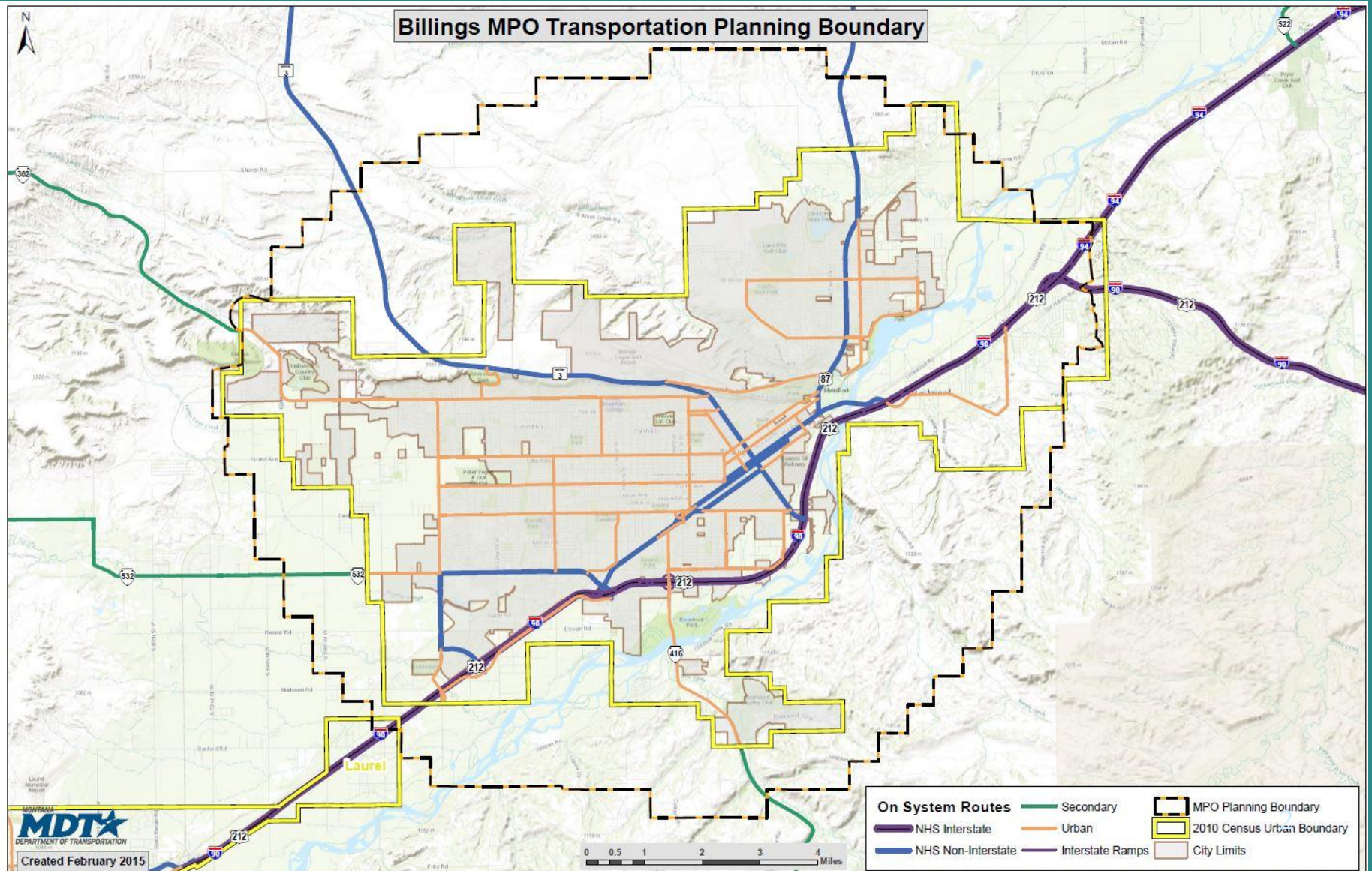
Planning Board

Transportation

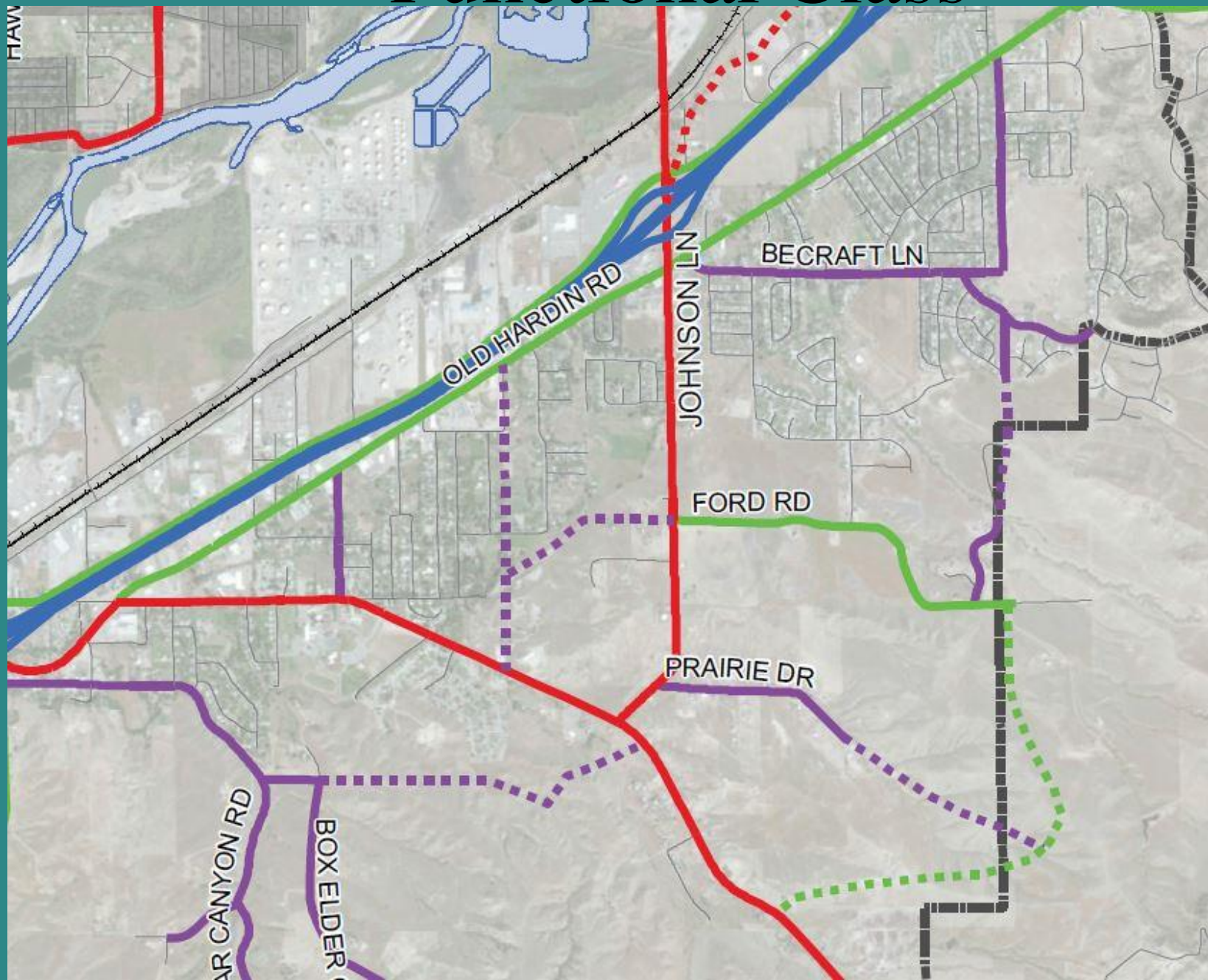
Planning:

**The Community of
Lockwood**

MPO Boundary



Functional Class





2014 BILLINGS URBAN AREA LONG RANGE TRANSPORTATION PLAN

Yellowstone County Planning Board
February 10, 2014





LOCKWOOD
TRANSPORTATION
STUDY

FINAL DRAFT REPORT
8/15/08

Prepared for

Billings – Yellowstone
County Planning

Prepared by



ENGINEERING, INC.
Consulting Engineers and Land Surveyors

GOALS & OBJECTIVES

Lockwood Transportation Study

1. Document existing conditions and identify existing deficiencies
2. Forecast future traffic demands and develop a future street system plan
3. Evaluate pedestrian and bicycle corridors and provide a priority listing
4. Evaluate the role of transit in serving future transportation demands
5. Develop both short term and long term improvement concepts
6. Provide a project priority list with jurisdictional funding sources identified



**LOCKWOOD
PEDESTRIAN SAFETY
DISTRICT**



Non-Motorized Transportation Plan



 **Peaks to Plains Design**
LANDSCAPE ARCHITECTURE / PLANNING / CIVIL ENGINEERING

June 2015





DRAFT

BILLINGS AREA

BIKEWAY + TRAILS

MASTER PLAN UPDATE



WINTER 2017



BILLINGS AREA I-90 CORRIDOR PLANNING STUDY

APPENDIX B EXISTING AND PROJECTED CONDITIONS REPORT

PREPARED FOR:



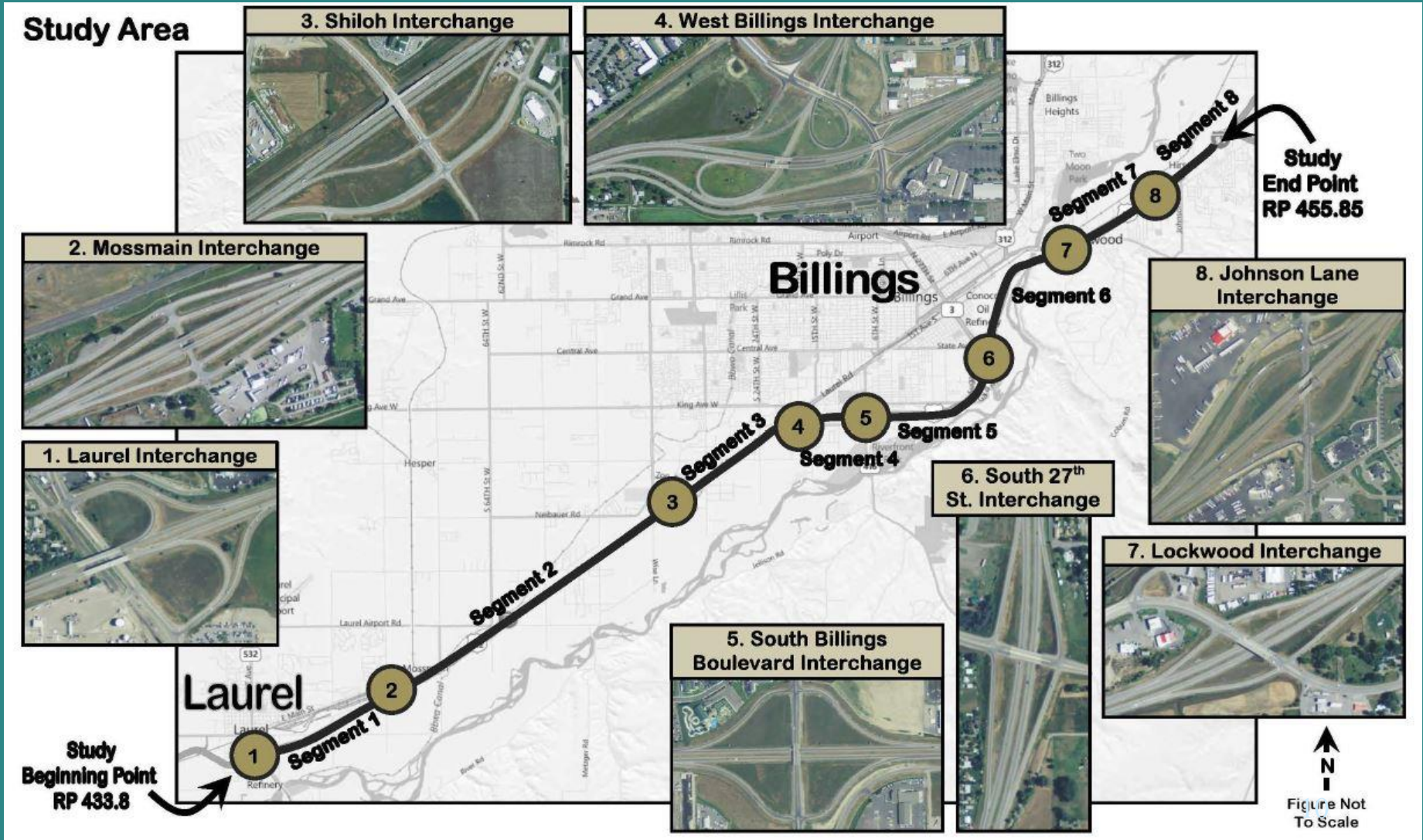
PREPARED BY:



104 East Broadway, Suite G-1
P.O. Box 1009
Helena, Montana 59624
(406) 442-0370

March 2012

I-90 Corridor Study



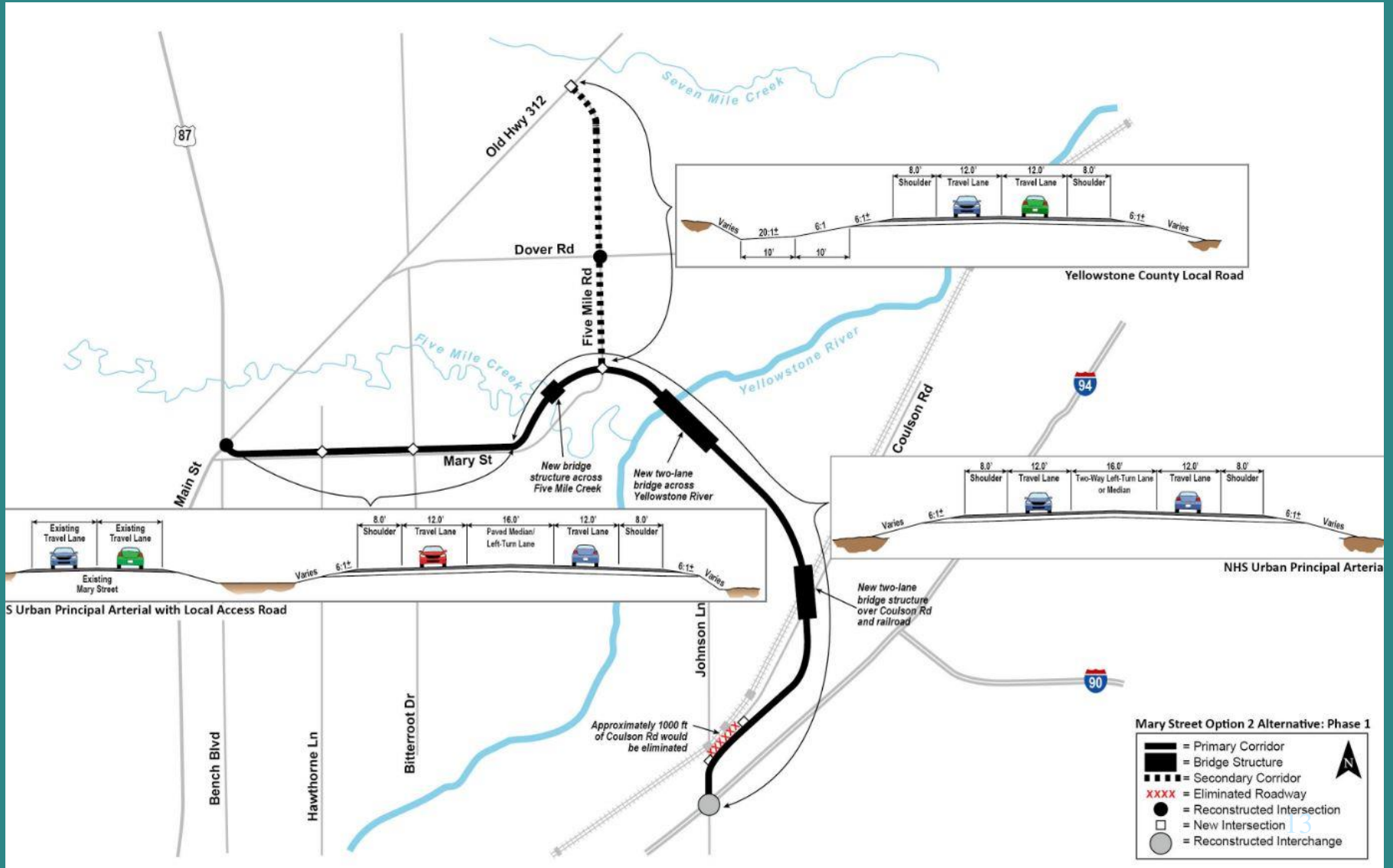
Lockwood Interchange



Johnson Lane Interchange



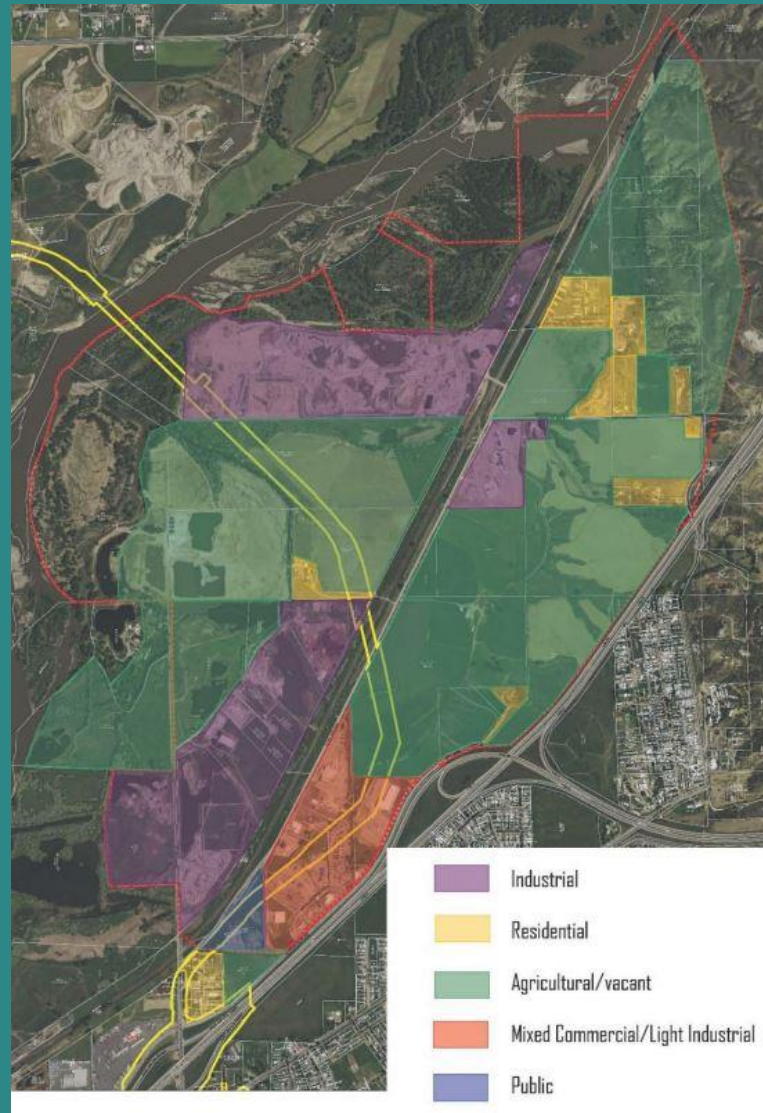
North Bypass



2016 LOCKWOOD GROWTH POLICY



Lockwood TEDD



Questions?