



PHOTO 1: NORTHERN PHOTOVOLTAIC ARRAY, STANDING WITHIN ROW AT INTERSECTION OF SIESTA AVE AND DRIVEWAY, LOOKING WEST



PHOTO 2: NORTHERN PHOTOVOLTAIC ARRAY, STANDING WITHIN ROW AT SIESTA AVE, LOOKING EAST

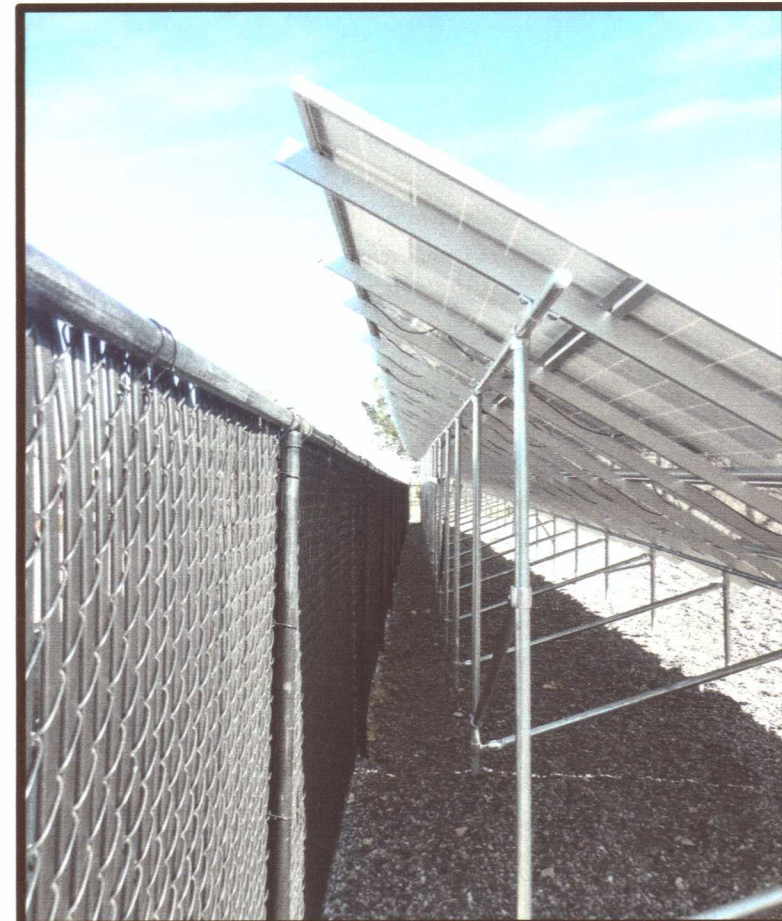


PHOTO 3: NORTHERN PHOTOVOLTAIC ARRAY, STANDING WITHIN FENCED AREA, LOOKING EAST.

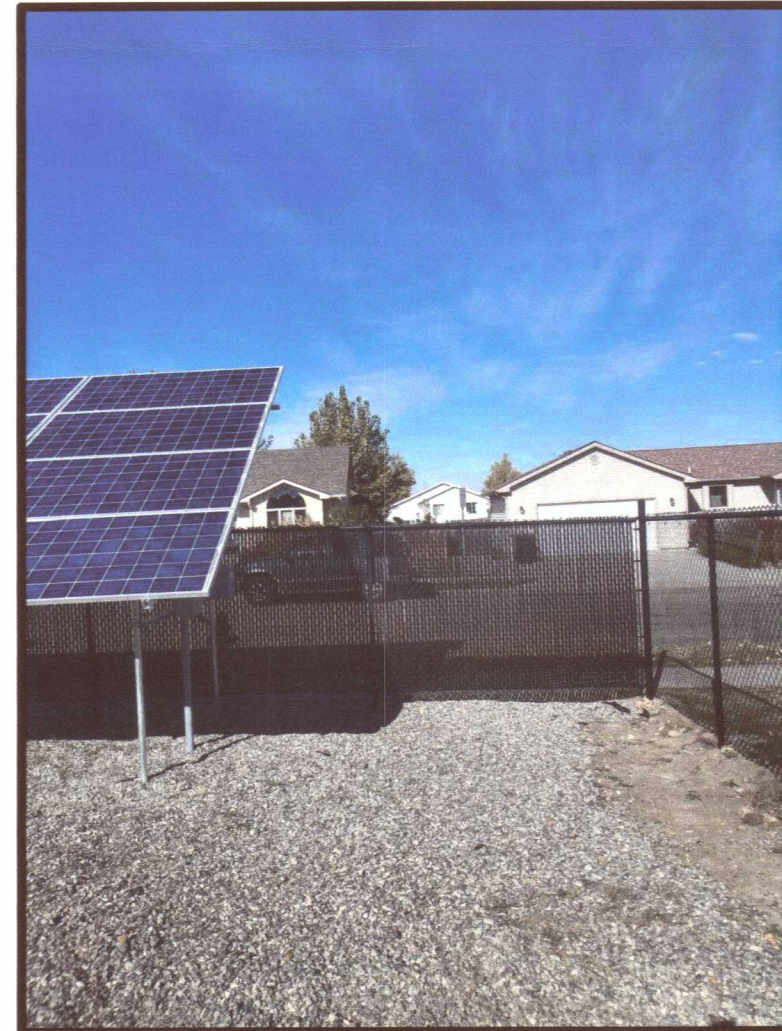


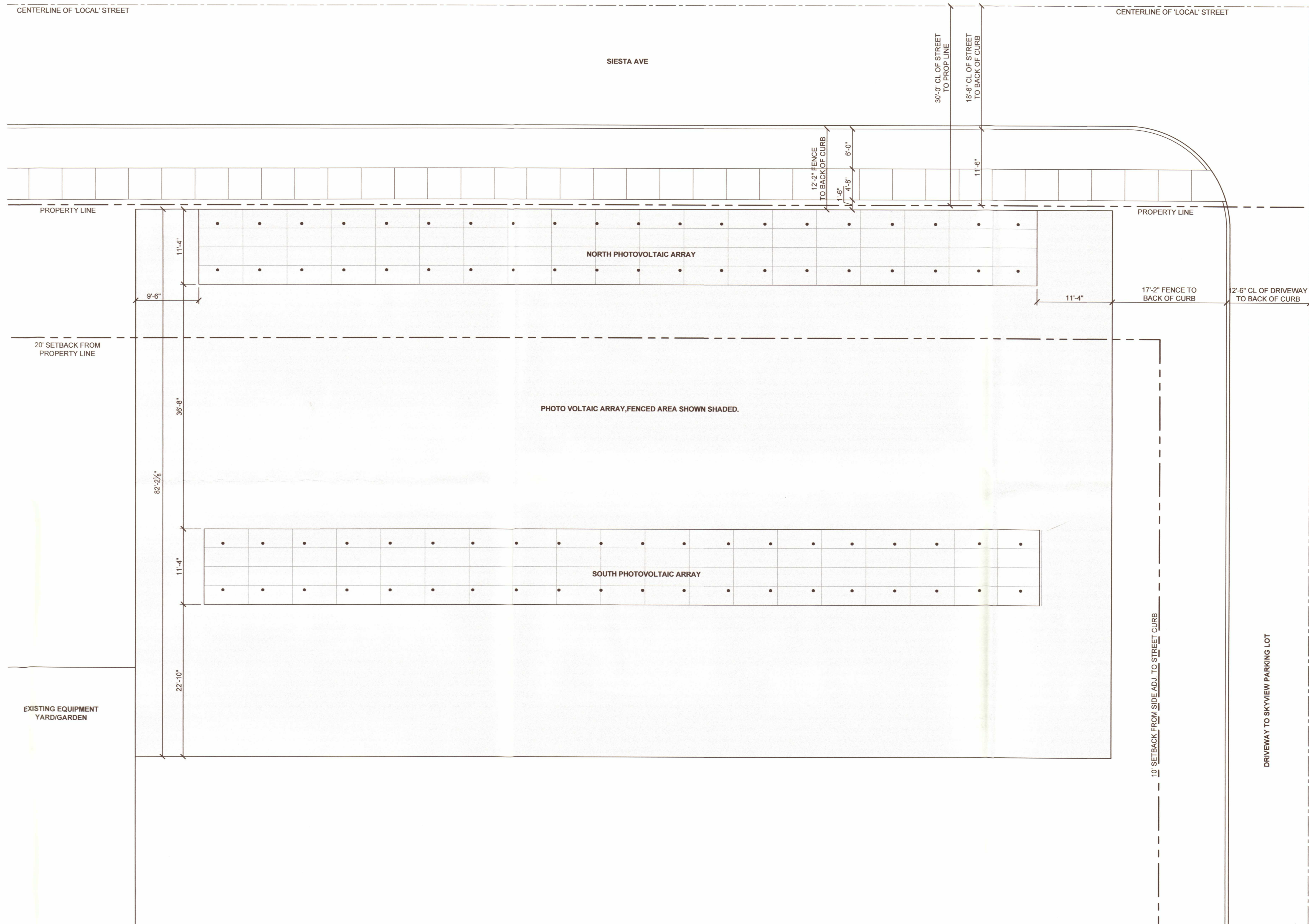
PHOTO 4: NORTHERN PHOTOVOLTAIC ARRAY, STANDING AT EASTERN PERIMETER OF FENCED AREA, LOOKING NORTH.



PHOTO 5: SOUTHERN PHOTOVOLTAIC ARRAY, STANDING AT WESTERN PERIMETER OF FENCED AREA, LOOKING SOUTH.



PHOTO 6: SOUTHERN PHOTOVOLTAIC ARRAY, STANDING AT EASTERN PERIMETER OF FENCED AREA, LOOKING WEST.



1 SITE PLAN - PHOTOVOLTAIC ARRAY
A101 1/8"=1'-0"

1775 HIGH SIERRA BLVD, BILLINGS, 59105
SKYVIEW HIGH SCHOOL - BILLINGS PUBLIC SCHOOL DISTRICT #2
PHOTOVOLTAIC ARRAY - AS BUILTS

© 2015 | ALL RIGHTS RESERVED
AS-BUILT DRAWINGS
10.25.2018
DRAWN BY | SMITH
CHECKED BY | CARLSON
REVISIONS

06.25.17 11:09 PM | M:\0685822_Electrical\SS2_Plan\Arch\CAD\SS2BL_SKYPV_SITE.dwg