

ATTACHMENT  
Applicant Letter & Site Plan

November 6, 2017

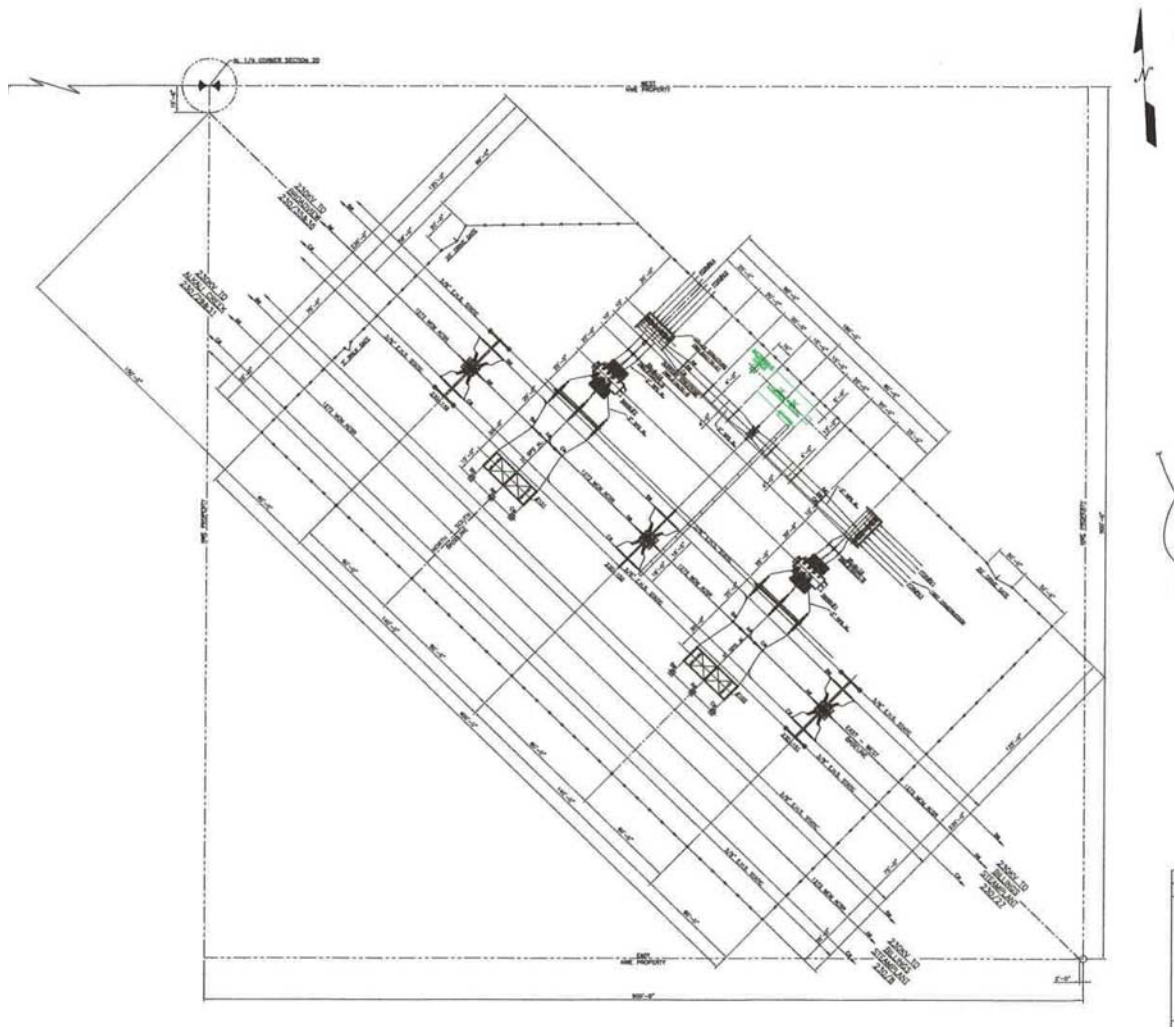
Statement to answer questions in instructions

NorthWestern Energy strives to provide the best possible electric utility service to the City, and to the people of Billings and the surrounding area. The addition of this microwave facility is within the City limits in Ward 2, on Wicks Lane near the cross street of High Sierra Blvd. Wicks Lane is an improved street with utilities.

NorthWestern Energy needs this microwave facility to operate protective relay circuits to deal with various line faults should they occur. This new facility is on our existing electrical substation, and contained entirely in the existing fenced area. The substation was originally approved at this location on December 3, 1984.

The public will be better served because this improved capability will allow NorthWestern Energy better control of their facilities, improved routing of electrical power, and more reliably provide electrical power to the City and the area residents.

This location is an existing electrical substation. We are adding a new 60' lattice com tower to accommodate microwave dishes, and, in the future, will add one 16' omni antenna for our internal communication. The Special Review is necessary because of the height of the new com tower; 50' is a use by right and we are exceeding that by up to 26' including the lattice tower and future omni antenna. The height of the structure is necessary to obtain a clear microwave path for the control of our electrical equipment. The microwave dishes will be at the top of the tower.





Existing



Proposed (rendering)