

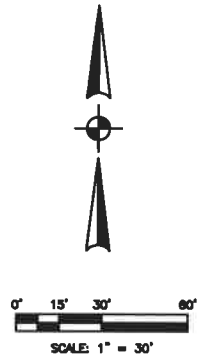
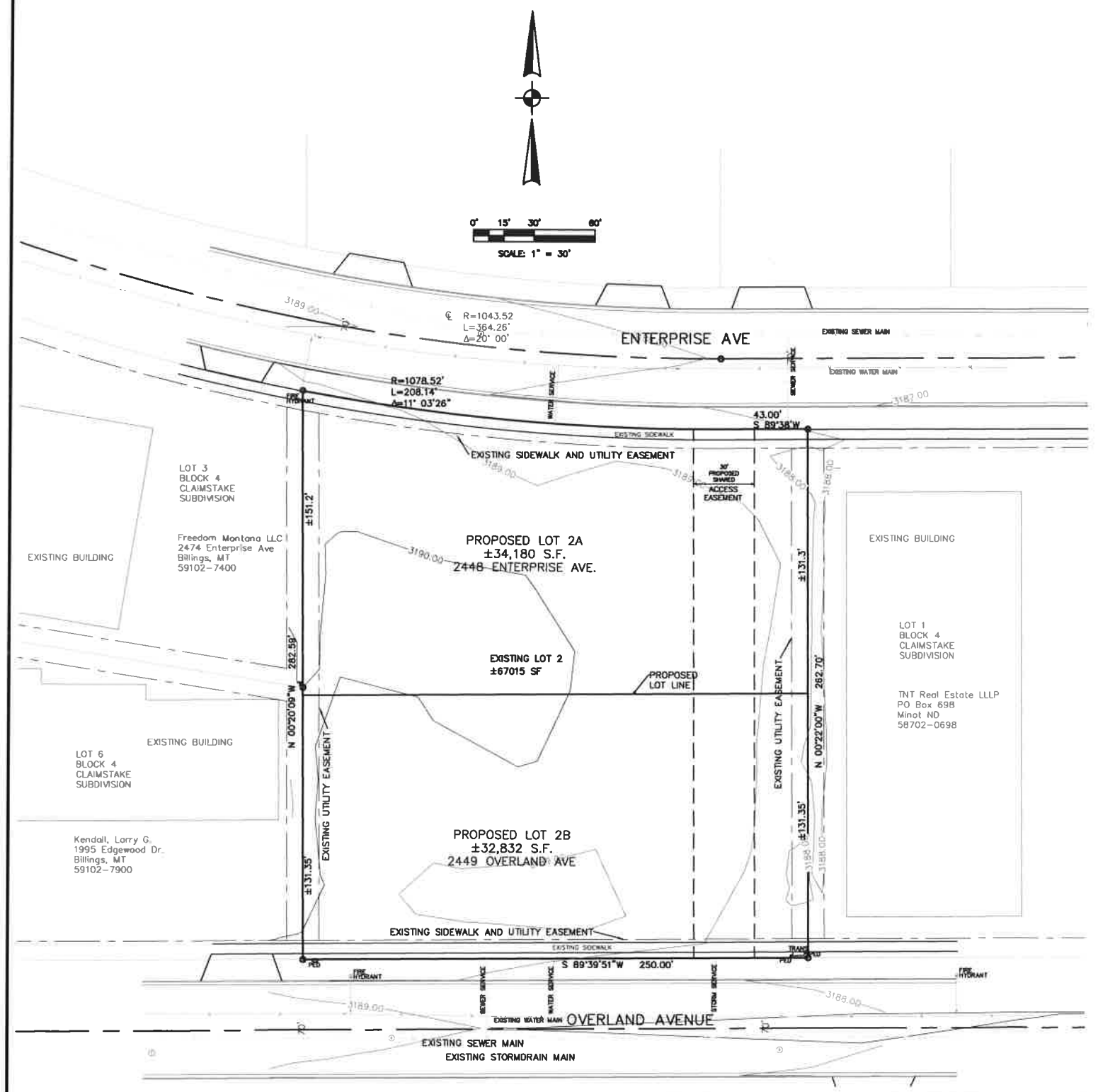
**PRELIMINARY PLAT OF
AMENDED PLAT OF LOT 2, BLOCK 4,
CLAIMSTAKE SUBDIVISION**

LOCATED IN THE NORTHEAST 1/4 SECTION 13, TOWNSHIP 1 SOUTH, RANGE
25 EAST, P.M.M., CITY OF BILLINGS, YELLOWSTONE COUNTY, STATE OF
MONTANA

OCTOBER, 2017 SURVEYED FOR: American Waterworks
SURVEYED BY: EGGART ENGINEERING COMPANY

SUBDIVISION DETAILS:

GROSS AREA:	1.54 ACRES
NET AREA:	1.54 ACRES
ROAD AREA:	0.00 ACRES
NUMBER OF LOTS:	2
MAXIMUM LOT SIZE:	0.78 ACRES
MINIMUM LOT SIZE:	0.75 ACRES
PARK DEDICATION:	0.00 ACRES
EXISTING LAND USE:	VACANT
PROPOSED LAND USE:	CONTROLLED INDUSTRIAL
ZONING:	CONTROLLED INDUSTRIAL



SITE



VICINITY MAP: NOT TO SCALE

CLERK AND RECORDER FILING INFORMATION