



STAHLY ENGINEERING & ASSOCIATES

PROFESSIONAL ENGINEERS & SURVEYORS
www.seaeng.com

2223 MONTANA AVE.
STE. 201
BILLINGS, MT 59101
Phone: (406)601-4055
Fax: (406)601-4062

3530 CENTENNIAL DR.
HELENA, MT 59601
Phone: (406)442-8594
Fax: (406)442-8557

851 BRIDGER DR. STE. 1
BOZEMAN, MT 59715
Phone: (406)522-9528
Fax: (406)522-9528

ISSUE/REVISION

No.	DATE	BY
1	###	###

DESCRIPTION

No.	DATE	BY
2		

DESCRIPTION

No.	DATE	BY
3		

DESCRIPTION

No.	DATE	BY
4		

DESCRIPTION

No.	DATE	BY
5		

DESCRIPTION

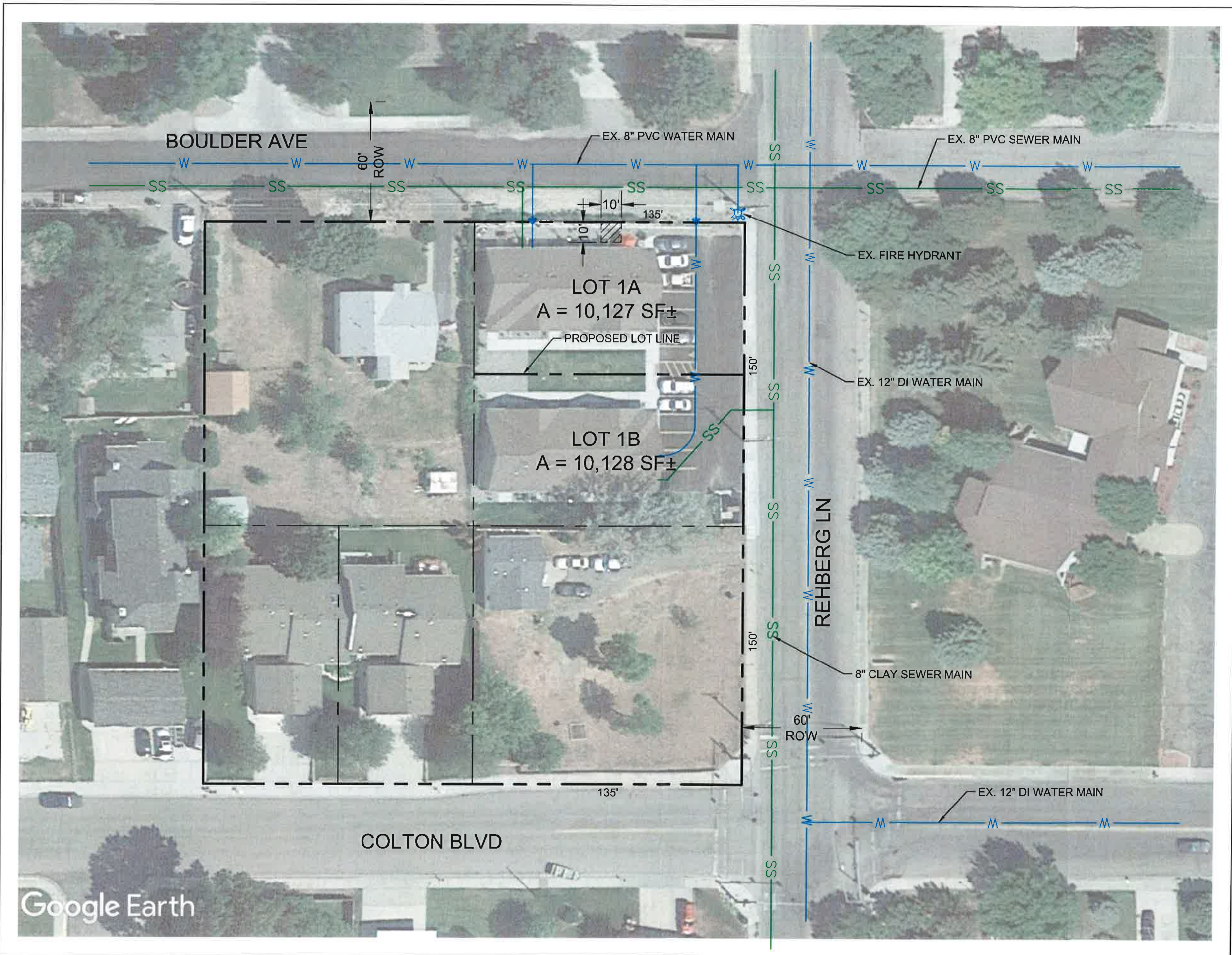
PROPOSED SUBDIVISION

AMENDED PLAT OF N 1/2 OF LOT 1, WOLF SUBDIVISION, BILLINGS, MT

2120 REHBERG, LLC
BILLINGS, MT

DESIGNED: DS
DRAWN: BQ
CHECKED: DS
DATE: 2-22-2018

SHEET
Fig. 2



Google Earth