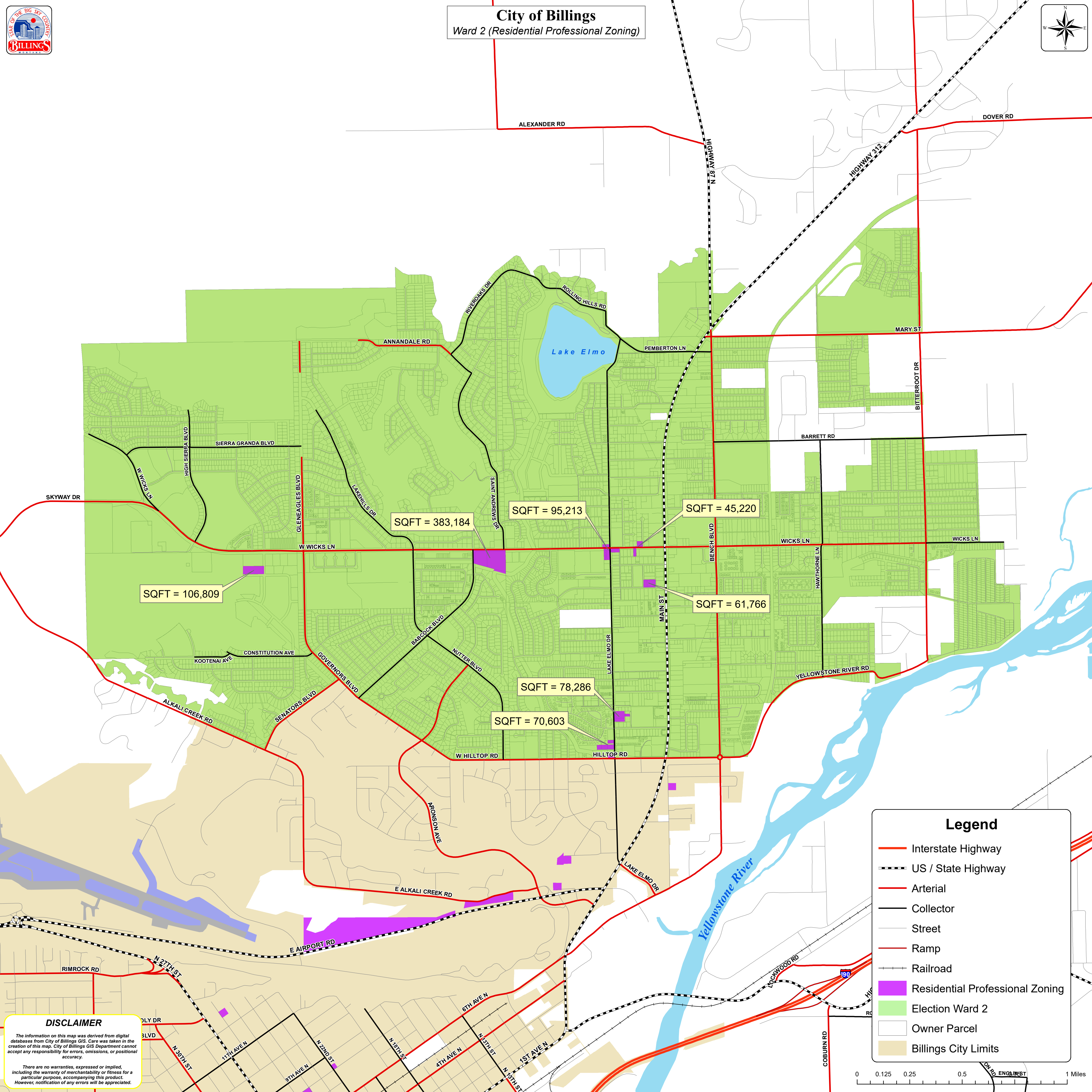
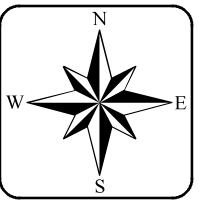




City of Billings
Ward 2 (Residential Professional Zoning)



DISCLAIMER
The information on this map was derived from digital databases from City of Billings GIS. Care was taken in the creation of this map. City of Billings GIS Department cannot accept any responsibility for errors, omissions, or positional accuracy.
There are no warranties, expressed or implied, including the warranty of merchantability or fitness for a particular purpose, accompanying this product. However, notification of any errors will be appreciated.

Legend

- Interstate Highway
- US / State Highway
- Arterial
- Collector
- Street
- Ramp
- Railroad
- Residential Professional Zoning
- Election Ward 2
- Owner Parcel
- Billings City Limits

