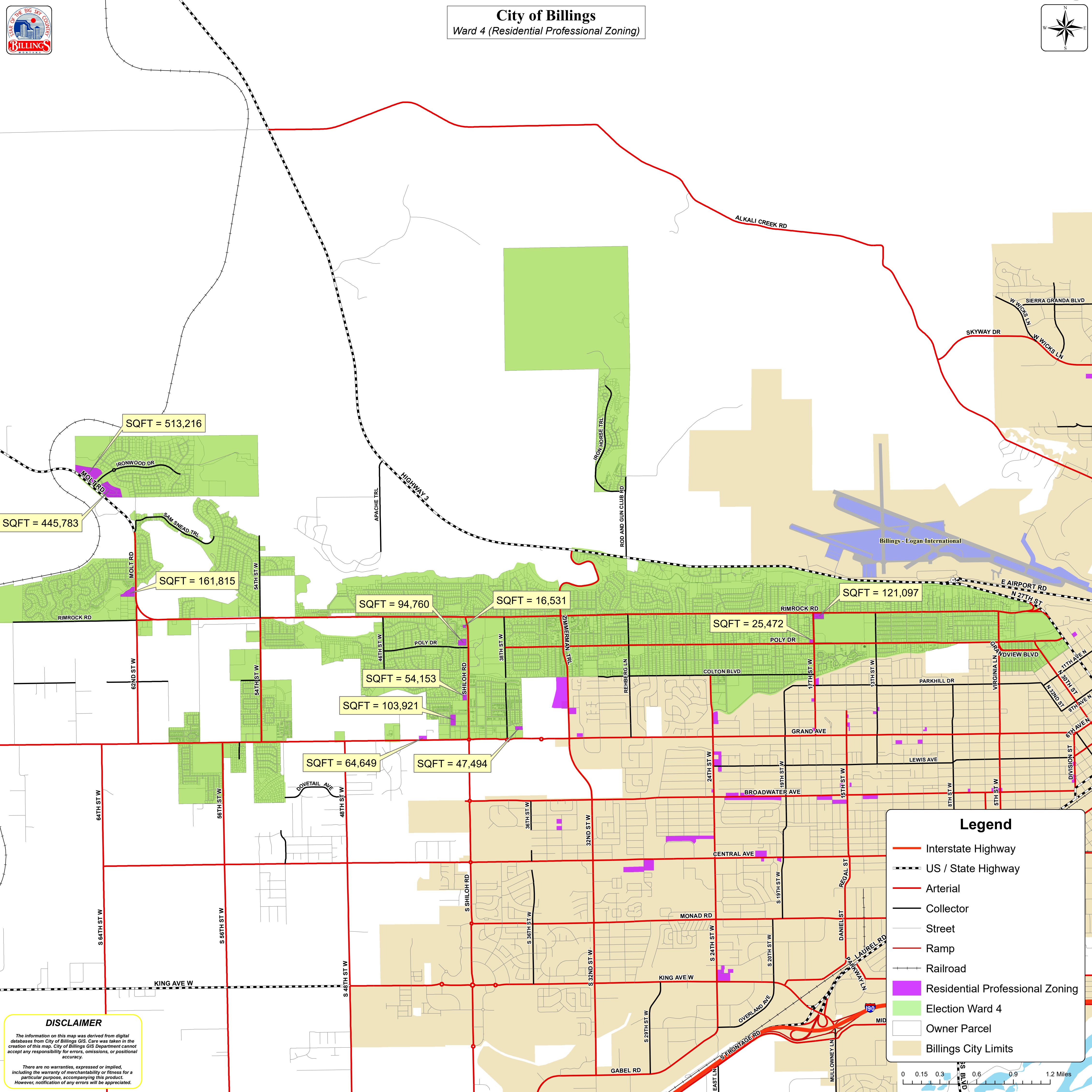
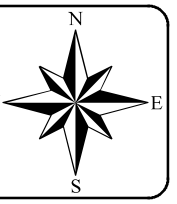




City of Billings
Ward 4 (Residential Professional Zoning)



SQFT = 513,216
 SQFT = 445,783
 SQFT = 161,815

SQFT = 94,760
 SQFT = 16,531
 SQFT = 25,472
 SQFT = 121,097
 SQFT = 54,153
 SQFT = 103,921
 SQFT = 64,649
 SQFT = 47,494

Legend

- Interstate Highway
- US / State Highway
- Arterial
- Collector
- Street
- Ramp
- Railroad
- Residential Professional Zoning
- Election Ward 4
- Owner Parcel
- Billings City Limits

DISCLAIMER
 The information on this map was derived from digital databases from City of Billings GIS. Care was taken in the creation of this map. City of Billings GIS Department cannot accept any responsibility for errors, omissions, or positional accuracy.
 There are no warranties, expressed or implied, including the warranty of merchantability or fitness for a particular purpose, accompanying this product. However, notification of any errors will be appreciated.

