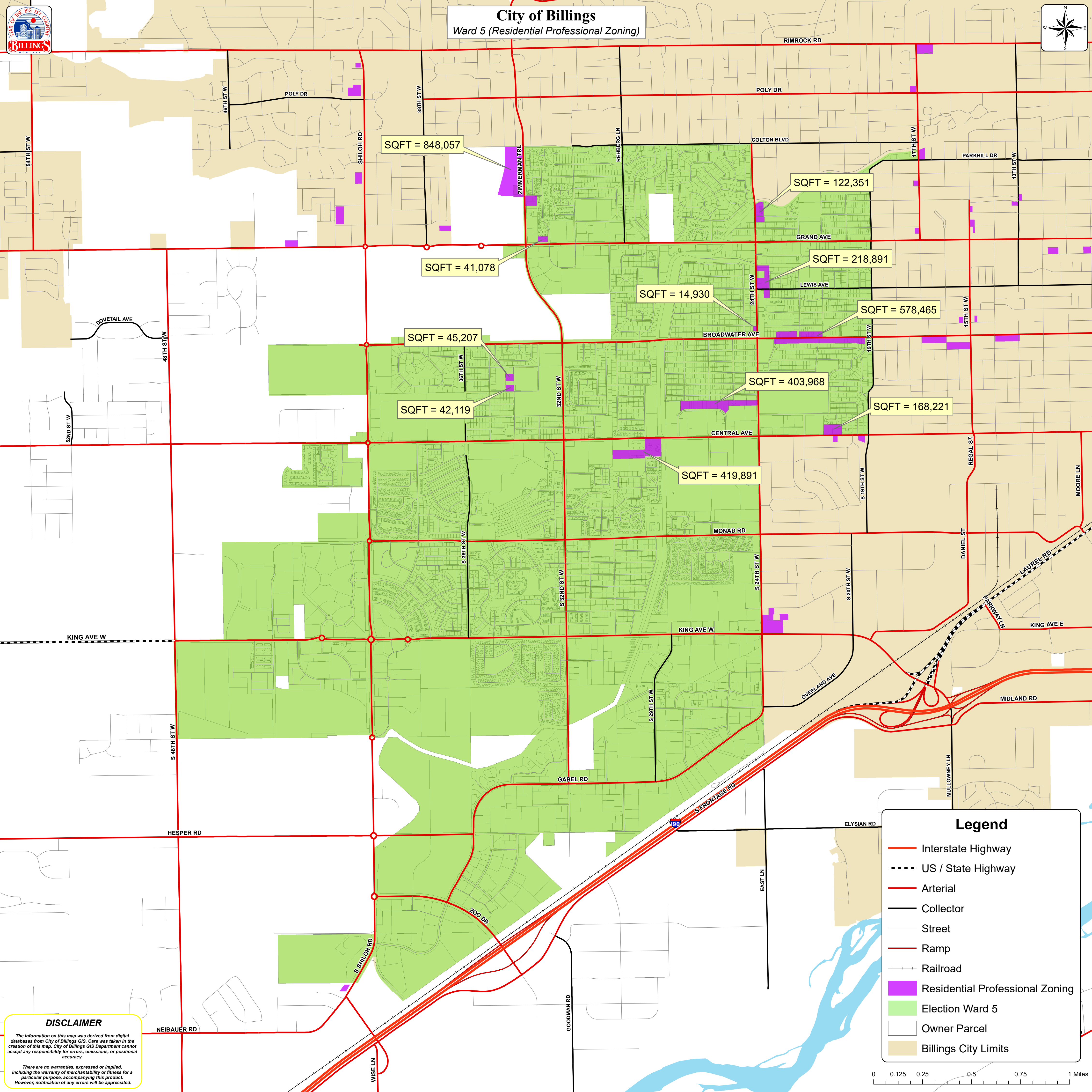
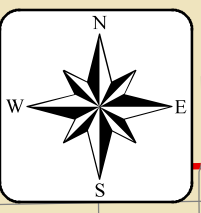




City of Billings
Ward 5 (Residential Professional Zoning)



SQFT = 848,057

SQFT = 122,351

SQFT = 41,078

SQFT = 218,891

SQFT = 14,930

SQFT = 578,465

SQFT = 45,207

SQFT = 403,968

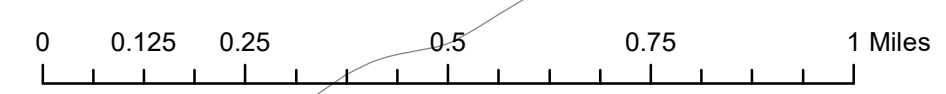
SQFT = 42,119

SQFT = 168,221

SQFT = 419,891

Legend

- Interstate Highway
- US / State Highway
- Arterial
- Collector
- Street
- Ramp
- Railroad
- Residential Professional Zoning
- Election Ward 5
- Owner Parcel
- Billings City Limits



DISCLAIMER

The information on this map was derived from digital databases from City of Billings GIS. Care was taken in the creation of this map. City of Billings GIS Department cannot accept any responsibility for errors, omissions, or positional accuracy.

There are no warranties, expressed or implied, including the warranty of merchantability or fitness for a particular purpose, accompanying this product. However, notification of any errors will be appreciated.