

PLAT OF LAKE HILLS SUBDIVISION, 36TH FILING

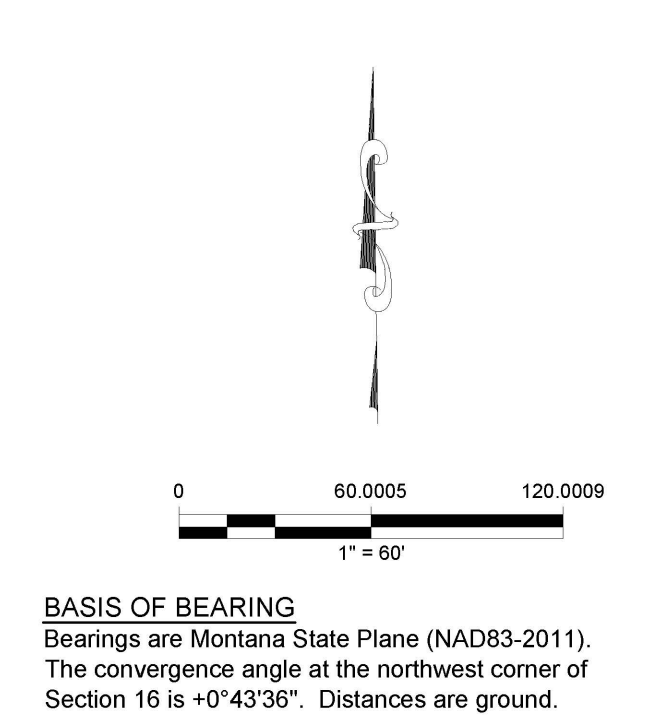
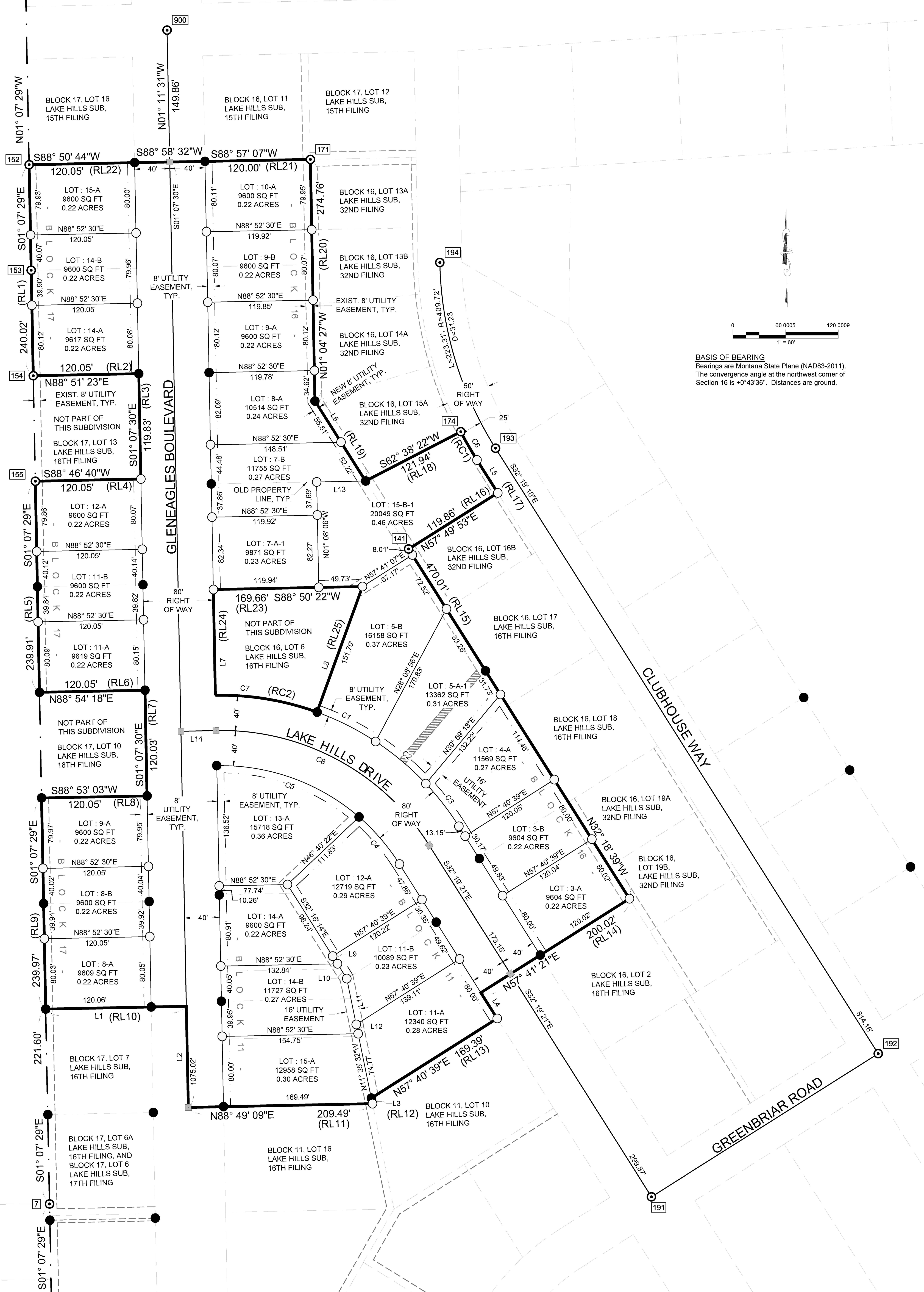
BEING LOTS 9 & 10, BLOCK 16, LOTS 14 & 15, BLOCK 17 OF LAKE HILLS SUBDIVISION 15TH FILING, DOCUMENT NO. 600127, LOTS 11-15, BLOCK 11, LOTS 3, 4 & 8, BLOCK 16, LOTS 8, 9, 11 & 12, BLOCK 17, LAKE HILLS SUBDIVISION 16TH FILING, DOCUMENT NO. 612466, LOTS 5-A AND 7-A, BLOCK 16 OF AMENDED PLAT OF LOTS 5, 7 & 16, BLOCK 16, LAKE HILLS SUBDIVISION 16TH FILING, DOCUMENT NO. 3547209, AND LOT 15B, BLOCK 16, LAKE HILLS SUBDIVISION 32ND FILING, DOCUMENT NO. 3565362, SITUATED IN THE NW 1/4 OF SECTION 16, TOWNSHIP 01 NORTH, RANGE 26 EAST, P.M.M., CITY OF BILLINGS, YELLOWSTONE COUNTY, MONTANA

PREPARED FOR : RON S. HILL
PREPARED BY : PERFORMANCE ENGINEERING

DATE OF SURVEY : AUGUST 2017
TOTAL AREA OF SUBDIVISION : ±7.18 ACRES

7/6/2018 11:47:37 AM

D:\Users\Craig D\AppData\Local\Temp\PEC Billings\PEC Billings Team Folder\Ron Hill\2017-07-07 Lake Hills 36th Filing Final Plat.dwg



LEGEND

- = FOUND MONUMENT, SEE TABLE FOR DESCRIPTION
- = FOUND BALD REBAR
- = SET 1/2" X 18" RB W/ PEC YPC, UNLESS OTHERWISE NOTED
- = SET BRASS CAP CENTERLINE MONUMENT WITH MONUMENT BOX
- = TABLED POINT, SEE TABLE FOR MORE INFORMATION
- = SECTION LINE
- = SUBDIVISION BOUNDARY
- = NEW EASEMENT LINE
- = EXISTING EASEMENT LINE
- = EASEMENT VACATION

NOTE: SEE PAGE 1 FOR ASSOCIATED LINE, CURVE, AND SURVEY MONUMENT TABLES.

7100 COMMERCIAL AVE., SUITE 4 BILLINGS, MT 59101	OFFICE - 406-384-0080 www.performance-ec.com	SHEET
		2 OF 2
DRAWN BY: WJM	CHECKED BY: MWK	DATE: 03JUL2018
COPYRIGHT 2018 ©		