

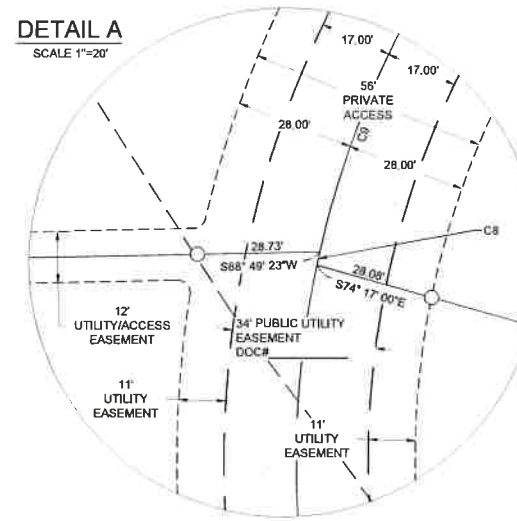
PLAT OF GLYNN ABBEY SUBDIVISION

BEING TRACT 3 AND TRACT 4 OF CERTIFICATE OF SURVEY NO. 836
LOCATED IN THE SW 1/4 AND THE SE 1/4 OF SECTION 30, T 01 N, R 25 E, P.M.M., CITY OF
BILLINGS, YELLOWSTONE COUNTY, MONTANA

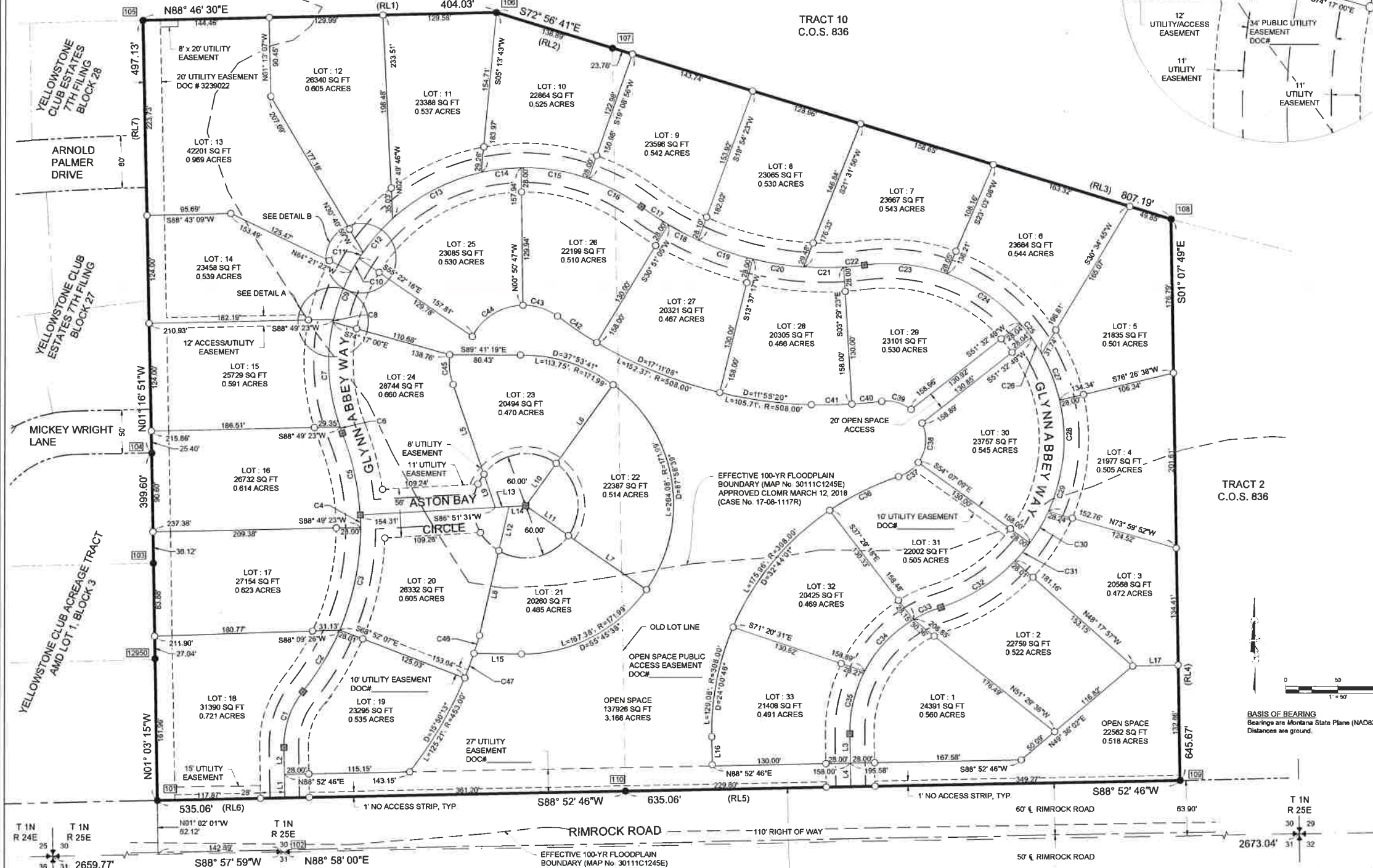
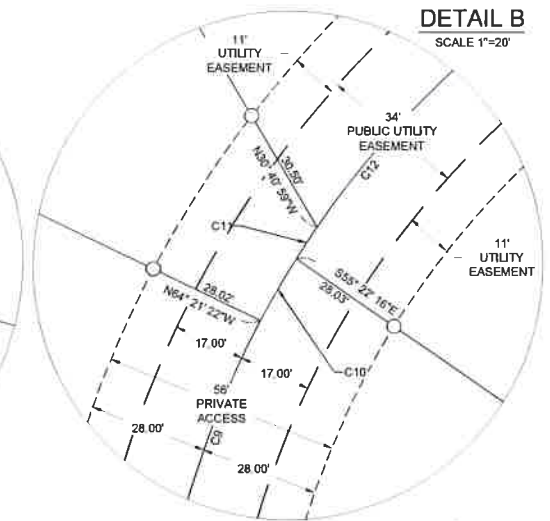
PREPARED FOR: GLYNN ABBEY, LLC
PREPARED BY: PERFORMANCE ENGINEERING

DATE OF SURVEY: JUNE 2018
TOTAL AREA SUBDIVIDED ± 21.89 ACRES

DETAIL A
SCALE 1"=20'



DETAIL B
SCALE 1"=20'



LEGEND

- = FOUND QUARTER CORNER
- = FOUND SECTION CORNER
- = FOUND SURVEY MONUMENT AS NOTED
- = SET 1/2" X 1/8" RW WPC, UNLESS OTHERWISE NOTED
- = SET BRASS CAP CENTERLINE MONUMENT WITH MONUMENT BOX
- = CENTERLINE
- = TABLED POINT - SEE TABLE ON SHEET 1
- = RECORD PLAT INFORMATION TAG - SEE TABLE ON SHEET 1
- = SECTION LINE
- = SUBDIVISION BOUNDARY
- = EASEMENT LINE, AS SPECIFIED IN DRAWING
- = PRIVATE ACCESS AND PUBLIC UTILITY EASEMENT LINE
- = CENTERLINE RIMROCK ROAD

BASIS OF BEARING
Bearings are Montana State Plane (NAD83-2011).
Distances are ground.

7100 COMMERCIAL AVE., SUITE 4
BILLINGS, MT 59101

OFFICE - 406-384-0080
www.performance-ec.com

PERFORMANCE ENGINEERING

SHEET
2 OF 2

DRAWN BY: WJM CHECKED BY: MWK DATE: 24JUL2018 COPYRIGHT 2018 ©

D:\Users\Craig.D\AppData\Local\Temp\2017-08-14\11-11-11\Glynn Abbey Subdivision 2017-08-14\DWG\PLAT\Final\14-011_GA Final Plat.dwg
 W:\95-35-3-RL1072727.dwg
 PEG 151 ANNUAL RW 151