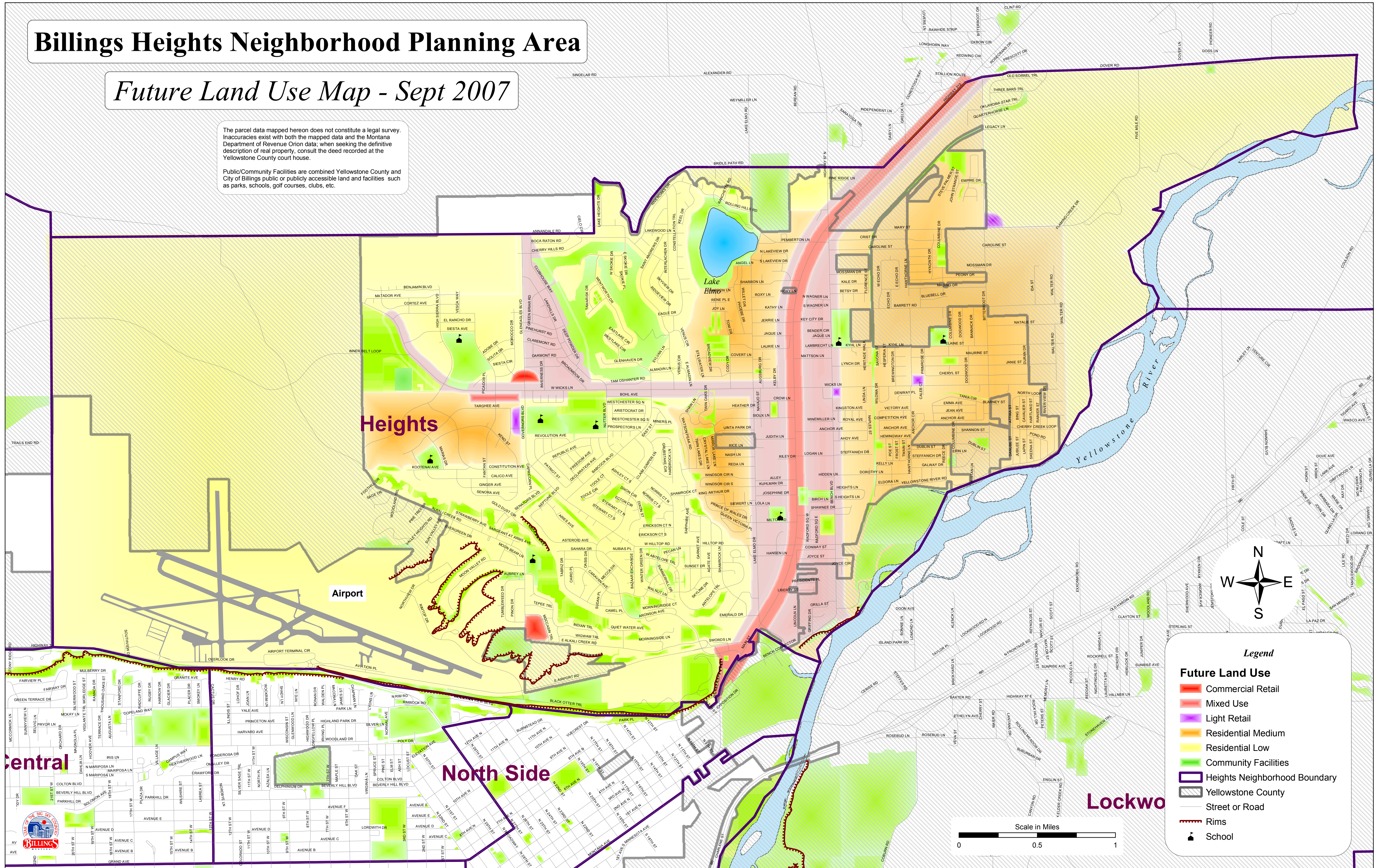


Billings Heights Neighborhood Planning Area

Future Land Use Map - Sept 2007

The parcel data mapped hereon does not constitute a legal survey. Inaccuracies exist with both the mapped data and the Montana Department of Revenue Orion data; when seeking the definitive description of real property, consult the deed recorded at the Yellowstone County court house.

Public/Community Facilities are combined Yellowstone County and City of Billings public or publicly accessible land and facilities such as parks, schools, golf courses, clubs, etc.



Legend

- Commercial Retail
- Mixed Use
- Light Retail
- Residential Medium
- Residential Low
- Community Facilities
- Heights Neighborhood Boundary
- Yellowstone County
- Street or Road
- Rims
- School

