

EXHIBIT A

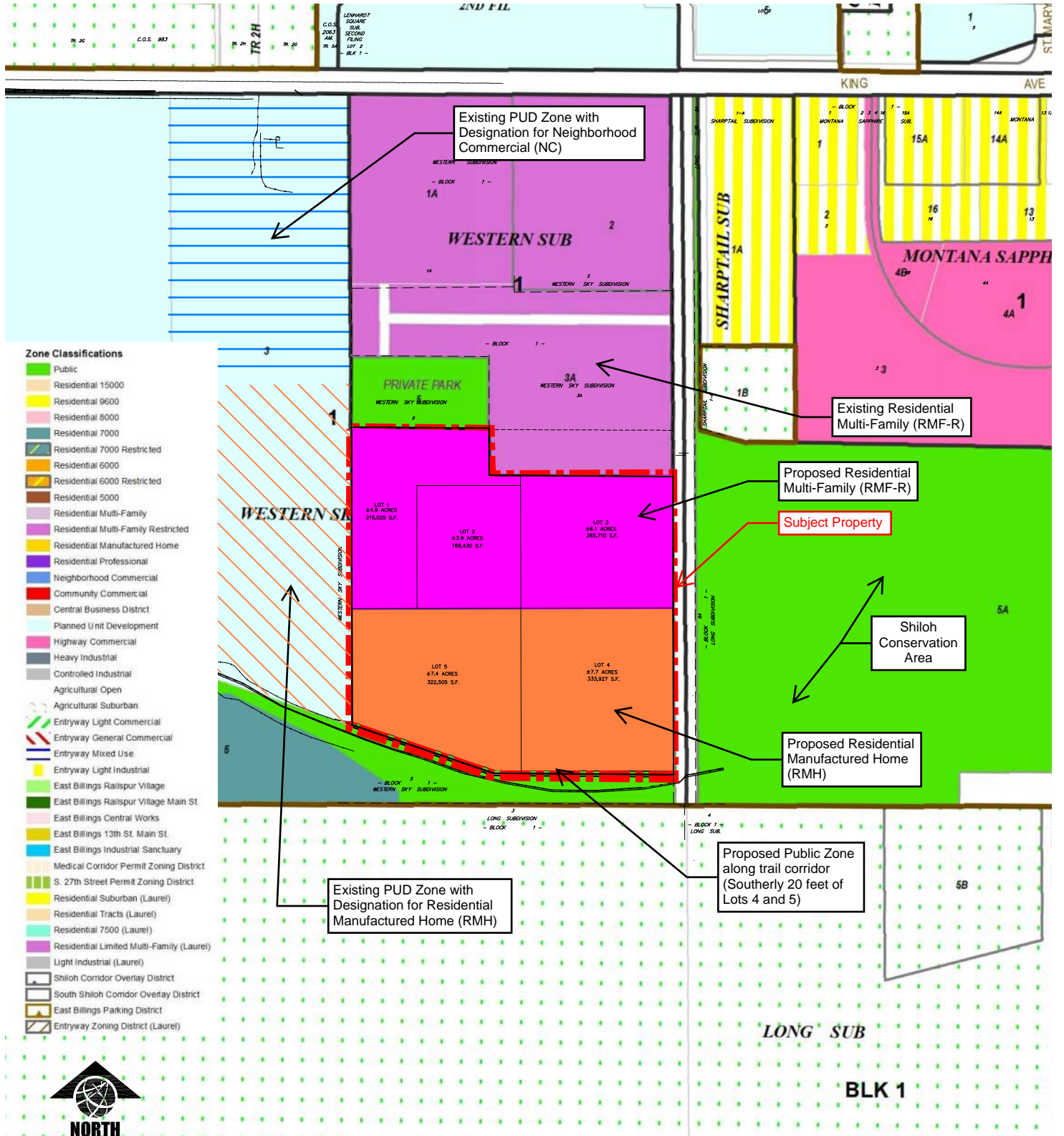
ZONE CHANGE EXHIBIT

PREPARED FOR : PROPRIEDAD, LLC.

OCTOBER, 2018

PREPARED BY : SANDERSON STEWART

BILLINGS, MONTANA



- Zone Classifications**
- Public
 - Residential 15000
 - Residential 9600
 - Residential 8000
 - Residential 7000
 - Residential 7000 Restricted
 - Residential 6000
 - Residential 6000 Restricted
 - Residential 5000
 - Residential Multi-Family
 - Residential Multi-Family Restricted
 - Residential Manufactured Home
 - Residential Professional
 - Neighborhood Commercial
 - Community Commercial
 - Central Business District
 - Planned Unit Development
 - Highway Commercial
 - Heavy Industrial
 - Controlled Industrial
 - Agricultural Open
 - Agricultural Suburban
 - Entryway Light Commercial
 - Entryway General Commercial
 - Entryway Mixed Use
 - Entryway Light Industrial
 - East Billings Railspur Village
 - East Billings Railspur Village Main St.
 - East Billings Central Works
 - East Billings 13th St. Main St.
 - East Billings Industrial Sanctuary
 - Medical Corridor Permit Zoning District
 - S. 27th Street Permit Zoning District
 - Residential Suburban (Laurel)
 - Residential Tracts (Laurel)
 - Residential 7500 (Laurel)
 - Residential Limited Multi-Family (Laurel)
 - Light Industrial (Laurel)
 - Shiloh Corridor Overlay District
 - South Shiloh Corridor Overlay District
 - East Billings Parking District
 - Entryway Zoning District (Laurel)

NORTH
SCALE: 1"=500'