

PRELIMINARY PLAT OF
FOUNDERS PARK SUBDIVISION

BEING TRACT 1B, AMENDED TRACT 1 OF CERTIFICATE OF SURVEY No. 1335
 SITUATED IN THE NW1/4 NE1/4 SECTION 23, T1N, R26E, PMM
 IN THE CITY OF BILLINGS, YELLOWSTONE COUNTY, MONTANA

PREPARED FOR : MID-YELLOWSTONE VALLEY HABITAT FOR HUMANITY

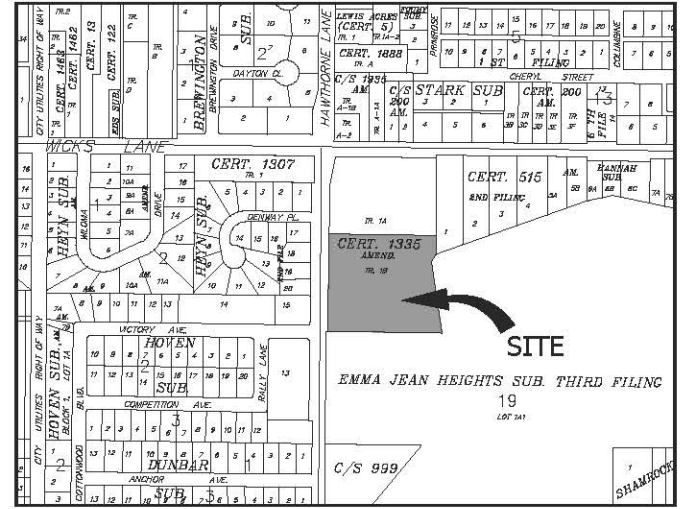
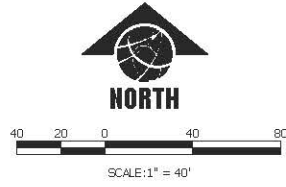
JANUARY, 2019

PREPARED BY : **SANDERSON STEWART**

BILLINGS, MONTANA

PLAT DATA

GROSS AREA	=	5.0 ACRES
NET AREA	=	3.8 ACRES
NUMBER OF LOTS	=	22
MINIMUM LOT SIZE	=	7,000 S.F.
MAXIMUM LOT SIZE	=	9,363 S.F.
LINEAL FEET OF STREETS	=	898 L.F.
PARKLAND REQUIREMENT	=	17,200 S.F.
PARKLAND DEDICATION	=	CASH IN LIEU
EXISTING ZONING	=	R-7000
SURROUNDING ZONING:		
NORTH	=	R-5000
SOUTH	=	R-7000
EAST	=	R-7000
WEST	=	R-7000
EXISTING LAND USE	=	VACANT - URBAN
PROPOSED LAND USE	=	R-7000



VICINITY MAP
 NOT TO SCALE

