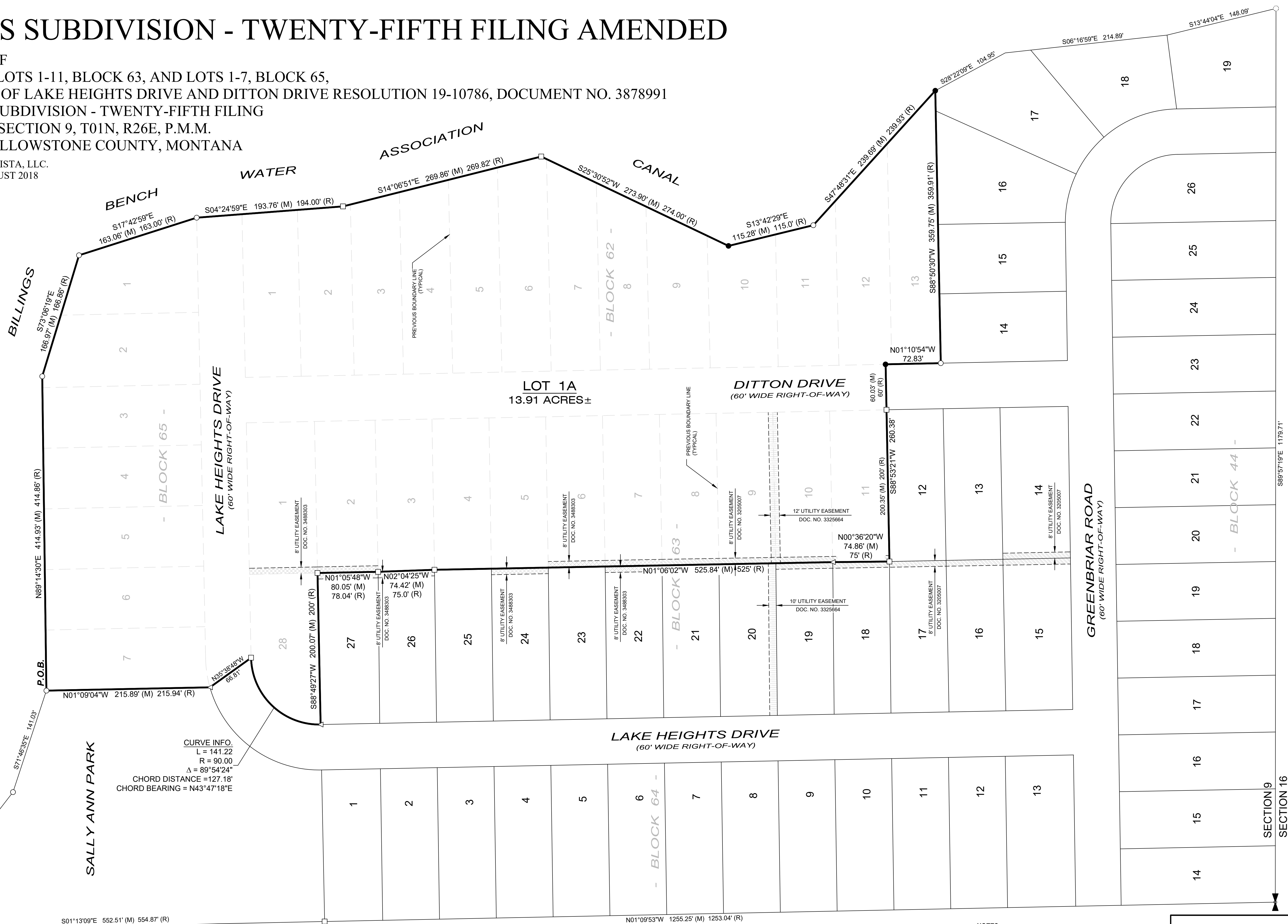
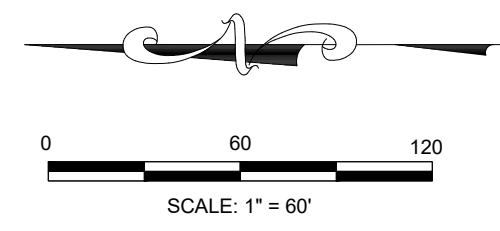


# PLAT OF LAKE HILLS SUBDIVISION - TWENTY-FIFTH FILING AMENDED

BEING A VACATION OF  
 LOTS 1-13, BLOCK 62, LOTS 1-11, BLOCK 63, AND LOTS 1-7, BLOCK 65,  
 A VACATED PORTION OF LAKE HEIGHTS DRIVE AND DITTON DRIVE RESOLUTION 19-10786, DOCUMENT NO. 3878991  
 WITHIN LAKE HILLS SUBDIVISION - TWENTY-FIFTH FILING  
 WITHIN W1/2SE1/4 OF SECTION 9, T01N, R26E, P.M.M.  
 CITY OF BILLINGS, YELLOWSTONE COUNTY, MONTANA

PREPARED FOR: CANAL VISTA, LLC.  
 DATE SURVEYED: AUGUST 2018



**CURVE INFO.**  
 L = 141.22  
 R = 90.00  
 Δ = 89°54'24"  
 CHORD DISTANCE = 127.18'  
 CHORD BEARING = N43°47'18"E

LEGEND	
●	SET REBAR W/ ALUM. CAP - LS 41531
○	FOUND REBAR
□	FOUND IRON PIPE
△	FOUND NAIL - SET REBAR W/ ALUM. CAP - LS 41531
(M)	MEASURED DISTANCE THIS SURVEY
(R)	RECORD DISTANCE PER LAKE HILLS SUBDIVISION - TWENTY-FIFTH FILING DOCUMENT NO. 688241 DATED 7/17/62
⊠	FOUND 1/4 SECTION CORNER
—	ADJACENT PROPERTY BOUNDARY
—	NEW BOUNDARY
---	PREVIOUS BOUNDARY
---	EXISTING EASEMENT
▨	EXISTING EASEMENT GRANTED TO YELLOWSTONE VALLEY ELECTRIC CO-OPERATIVE AND MONTANA DAKOTA UTILITIES, QWEST, AT&T CABLE DOCUMENT NO. 3205007 DATED 12/11/2002
▩	EXISTING EASEMENT GRANTED TO CITY OF BILLINGS DOCUMENT NO. 3325664 DATED 3/16/2005
▧	EXISTING EASEMENT GRANTED TO YELLOWSTONE VALLEY ELECTRIC CO-OPERATIVE AND MONTANA DAKOTA UTILITIES, QWEST COMMUNICATIONS, BRESNAN COMMUNICATIONS - DOCUMENT NO. 3488303 DATED 12/04/2008

**NOTES**  
 1. BASIS OF BEARING: NAD83(2011) MONTANA STATE PLANE COORDINATE SYSTEM, GRID  
 2. DISTANCES: GROUND, INTERNATIONAL FOOT

**SHEET 2 OF 2**

1/4	SEC.	TWP.	RGE.
9	9	01N	26E

**CANAL VISTA, LLC.**

JOB#: 2018-147

REVISIONS	
Date	By

**WWC ENGINEERING**  
 511 N 15th STREET, SUITE 1  
 BILLINGS, MT 59101  
 (406) 894-2210

Drawn By: AMR    Checked By: PAH    Date: DEC 2018    Scale: 1" = 60'