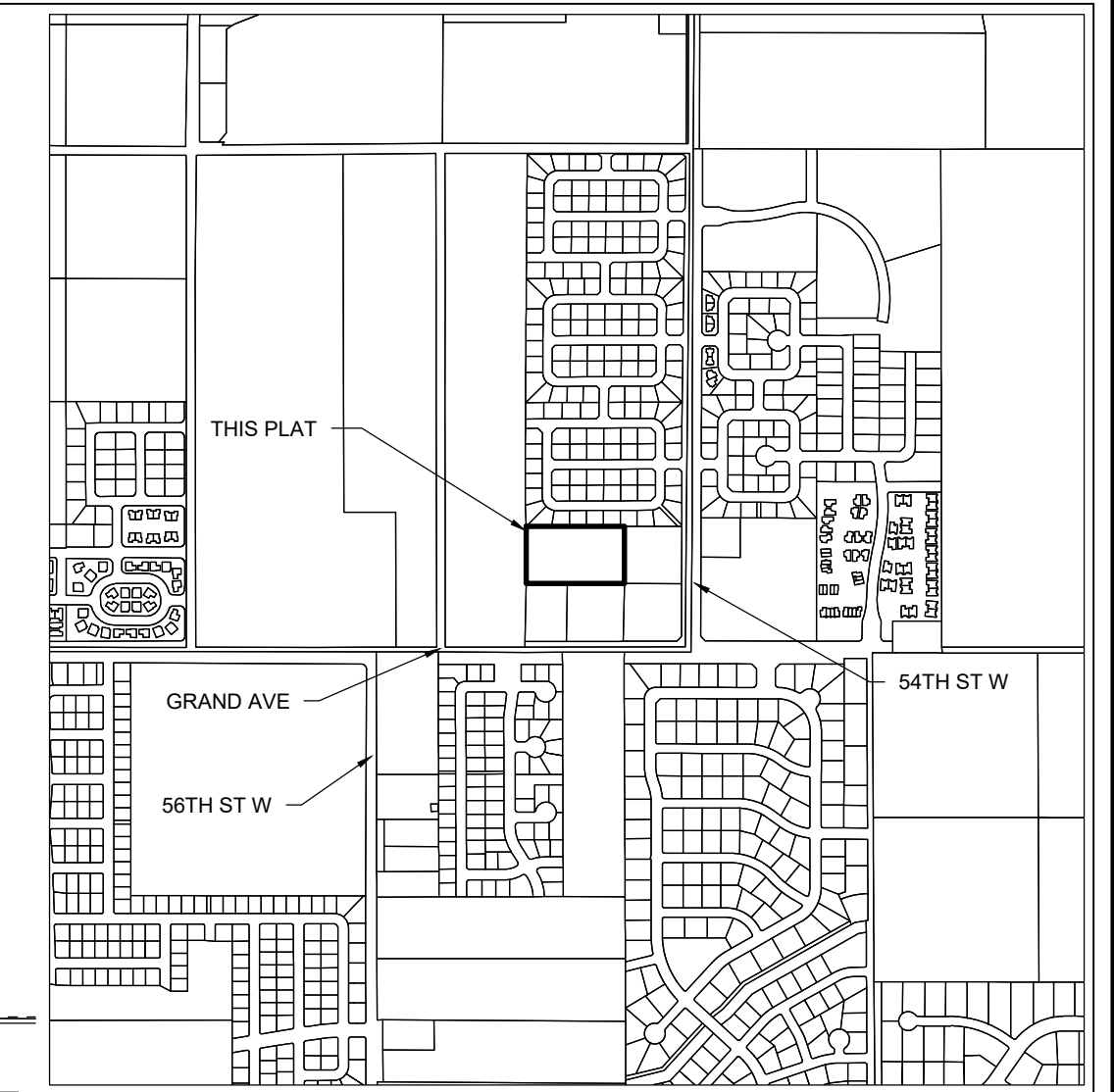
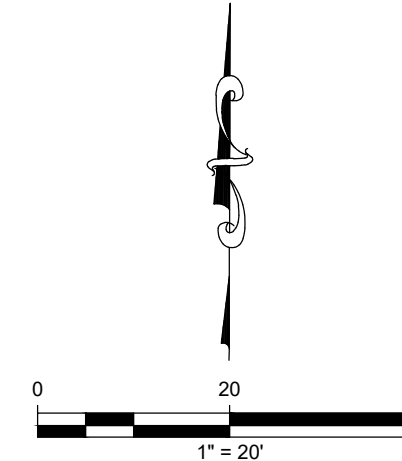


# PRELIMINARY PLAT FOR MK SUBDIVISION, 2ND FILING

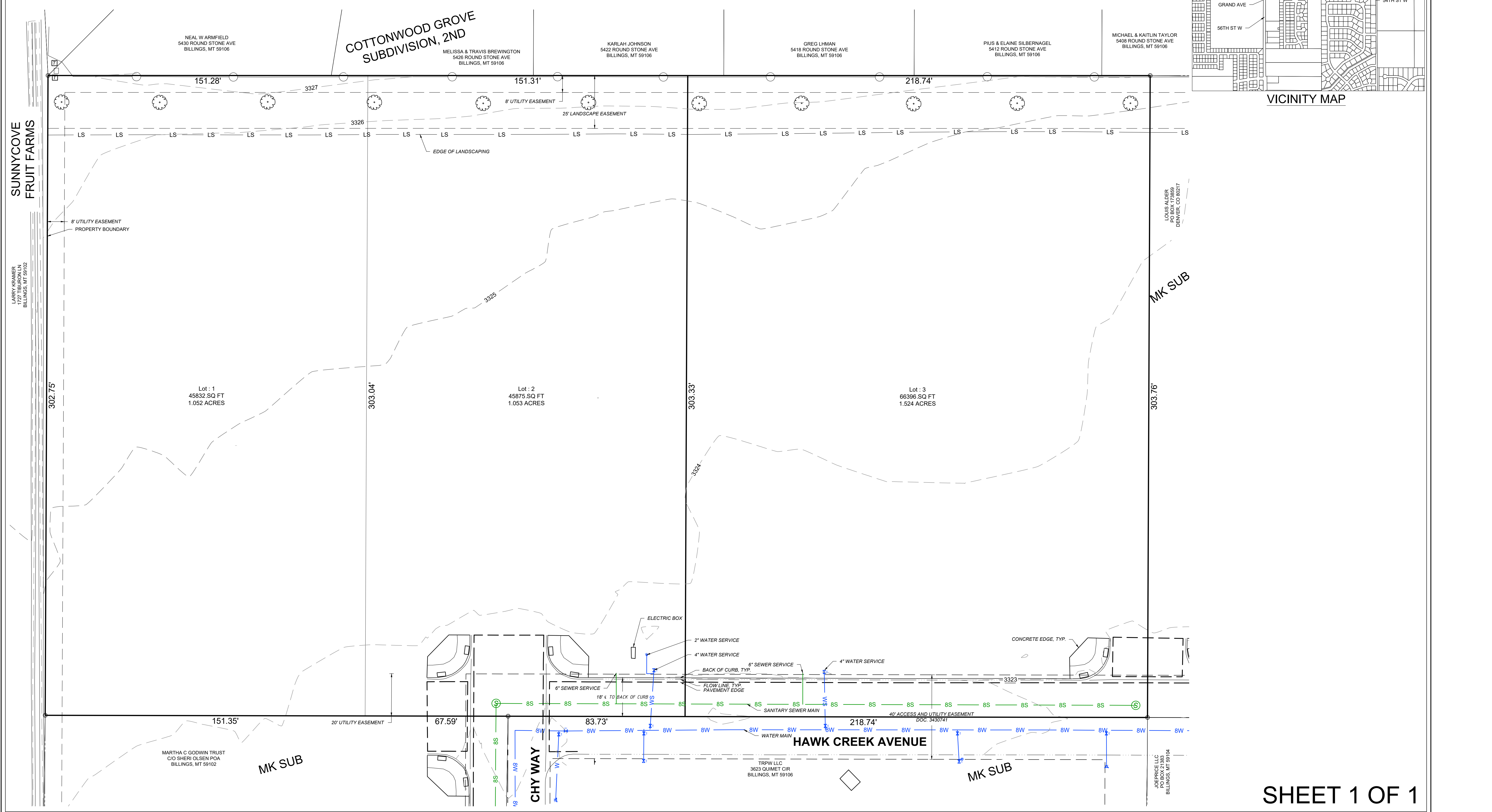
BEING LOT 4, BLOCK 1 OF MK SUBDIVISION  
LOCATED IN THE SE ¼ OF SECTION 31, TOWNSHIP 1 NORTH, RANGE 25 EAST, P.M.M,  
YELLOWSTONE COUNTY, MONTANA

EXISTING LAND USE: NEIGHBORHOOD COMMERCIAL  
PROPOSED LAND USE: NEIGHBORHOOD COMMERCIAL  
ZONING: PLANNED DEVELOPMENT (NC)  
PROPERTY OWNER: ARROWHEAD INVESTMENTS CORP

PREPARED FOR : ARROWHEAD INVESTMENTS CORP.  
PREPARED BY : PERFORMANCE ENGINEERING, LLC



VICINITY MAP



P:\Users\TCallahan\Dropbox (PEC Billings)\PEC Billings Team\Folder\Arrowhead Investment\2019-033 Big Open Beer\CAD\Plat\Plat19-033 Preliminary Plat.dwg  
 8/13/2019 11:16:09 AM  
 C:\Users\TCallahan\Dropbox (PEC Billings)\PEC Billings Team\Folder\Arrowhead Investment\2019-033 Big Open Beer\CAD\Plat\Plat19-033 Preliminary Plat.dwg