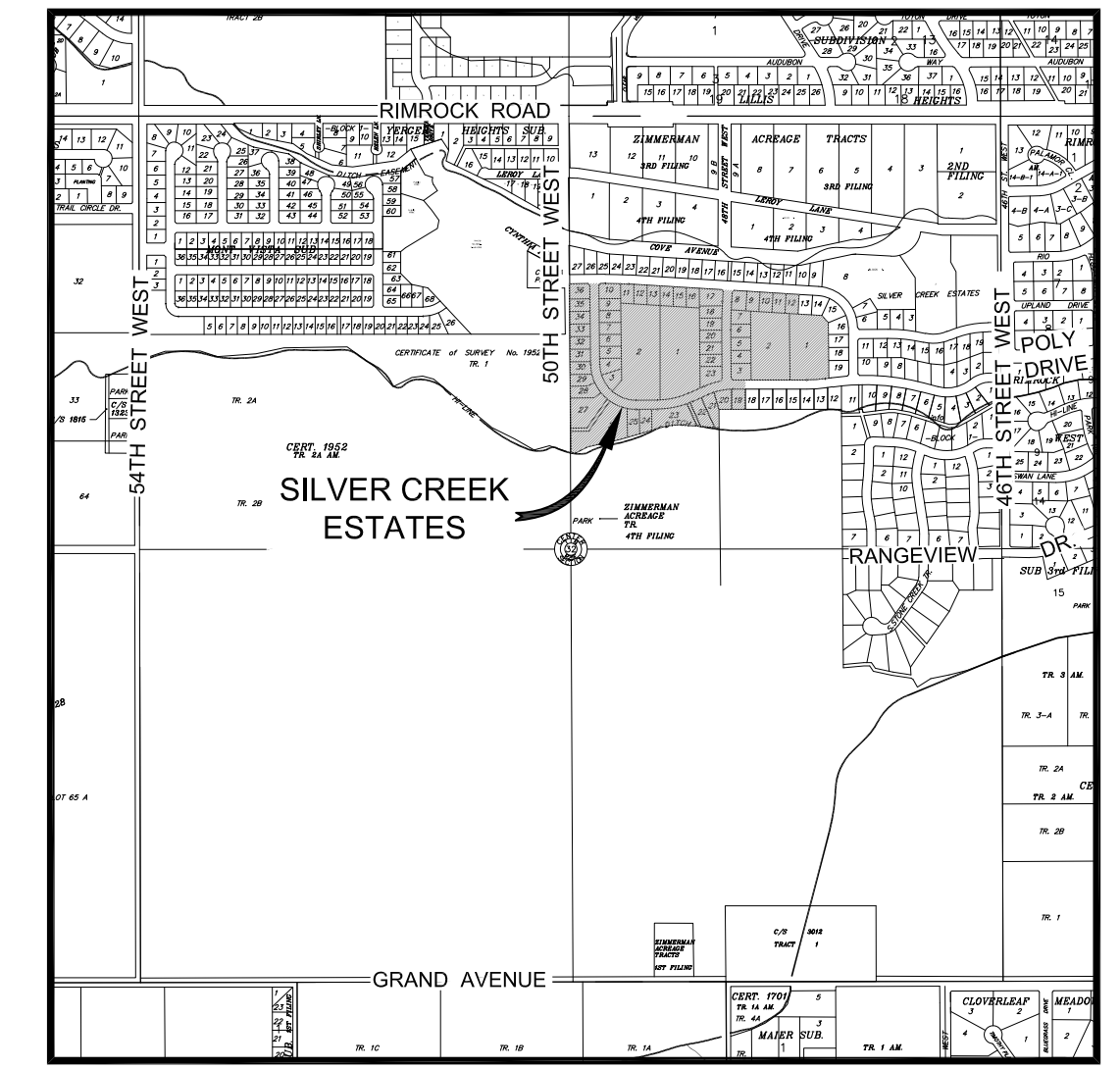
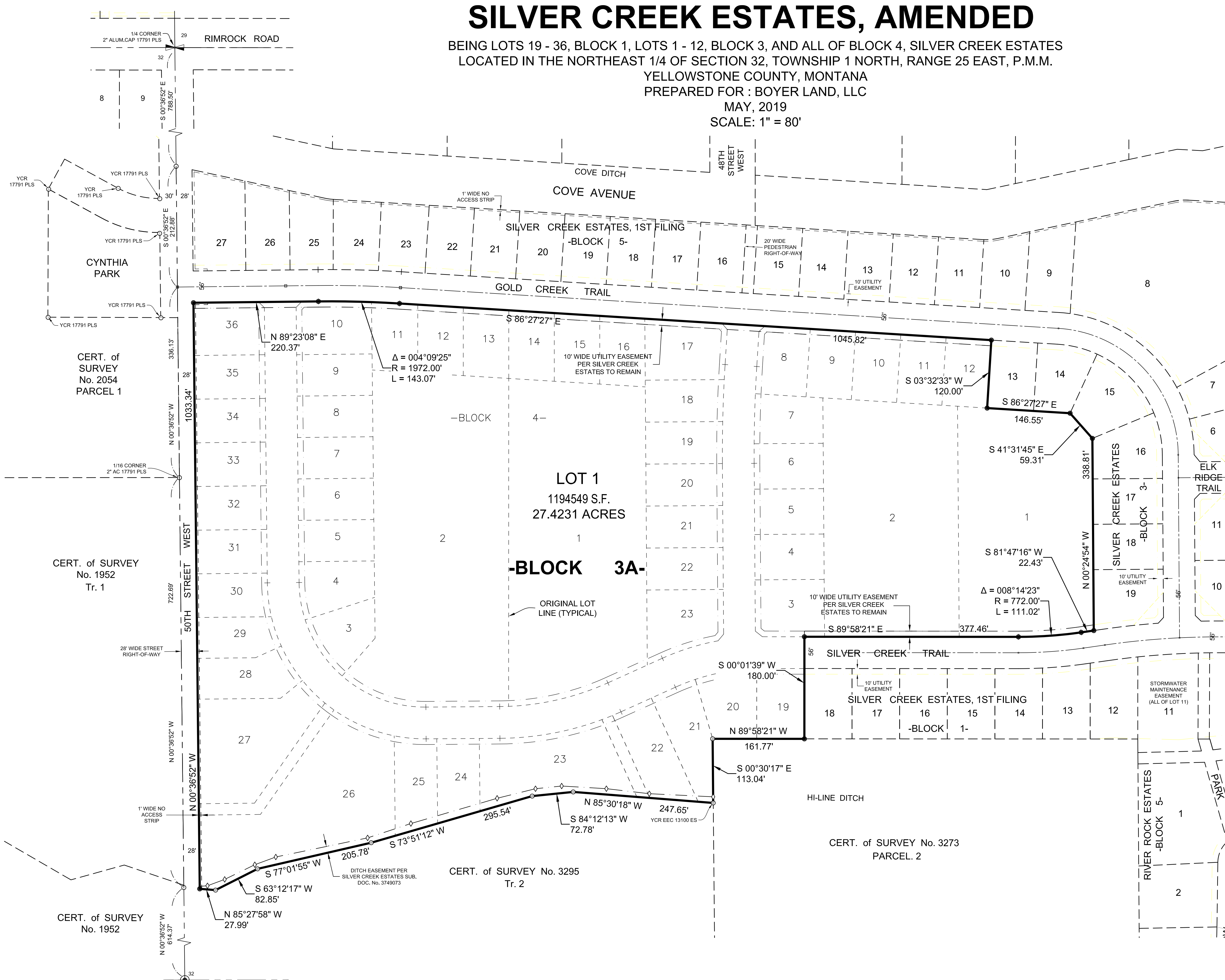
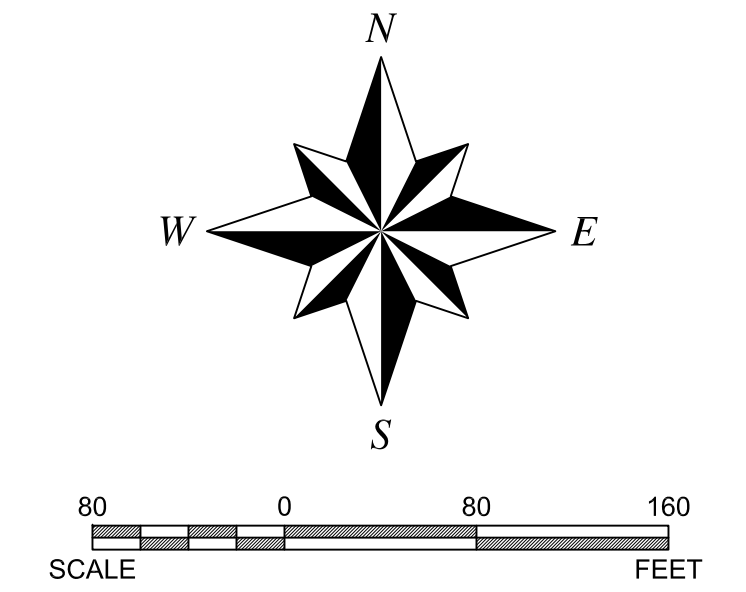


# PLAT OF SILVER CREEK ESTATES, AMENDED

BEING LOTS 19 - 36, BLOCK 1, LOTS 1 - 12, BLOCK 3, AND ALL OF BLOCK 4, SILVER CREEK ESTATES  
 LOCATED IN THE NORTHEAST 1/4 OF SECTION 32, TOWNSHIP 1 NORTH, RANGE 25 EAST, P.M.M.

YELLOWSTONE COUNTY, MONTANA  
 PREPARED FOR : BOYER LAND, LLC

MAY, 2019  
 SCALE: 1" = 80'



VICINITY MAP

**BASIS OF BEARINGS:**  
 GEODETIC NORTH DETERMINED AT THE SOUTHWEST CORNER OF SECTION 32, T. 1 N., R. 25 E., P.M.M. WHICH IS A 2-1/2 INCH BRASS CAP IN A MONUMENT BOX AT THE INTERSECTION OF GRAND AVENUE AND 54TH STREET WEST AND IS LOCATED AT LATITUDE 45°47'02.67960"N, LONGITUDE 108°39'09.64736"W, NAD83(2011) (EPOCH 2010.0000).

BEARINGS SHOWN ARE GRID BEARINGS AND HAVE NOT BEEN ADJUSTED FOR CONVERGENCE.  
 DISTANCES SHOWN ARE GROUND DISTANCES.

- LEGEND**
- ⊠ = FOUND 1/4 CORNER
  - ⊙ = FOUND CENTER 1/4 CORNER
  - = FOUND SURVEY CAPPED REBAR MONUMENT MARKED 17791 PLS, OR AS NOTED
  - = SET SURVEY YELLOW CAPPED REBAR MONUMENT MARKED KLJ 17791 PLS
  - ⊥ = SET 5/8" X 18" REBAR AND CAP MARKED WITH THE LICENSE NUMBER OF THE UNDERSIGNED LAND SURVEYOR AND "KLJ", UNLESS OTHERWISE NOTED
  - ◇ = COMPUTED POSITION NO MONUMENT SET

**BASIS OF BEARINGS:**  
 GEODETIC NORTH DETERMINED AT THE SOUTHWEST CORNER OF SECTION 32, T. 1 N., R. 25 E., P.M.M. WHICH IS A 2-1/2 INCH BRASS CAP IN A MONUMENT BOX AT THE INTERSECTION OF GRAND AVENUE AND 54TH STREET WEST AND IS LOCATED AT LATITUDE 45°47'02.67960"N, LONGITUDE 108°39'09.64736"W, NAD83(2011) (EPOCH 2010.0000).

BEARINGS SHOWN ARE GRID BEARINGS AND HAVE NOT BEEN ADJUSTED FOR CONVERGENCE.  
 DISTANCES SHOWN ARE GROUND DISTANCES.

