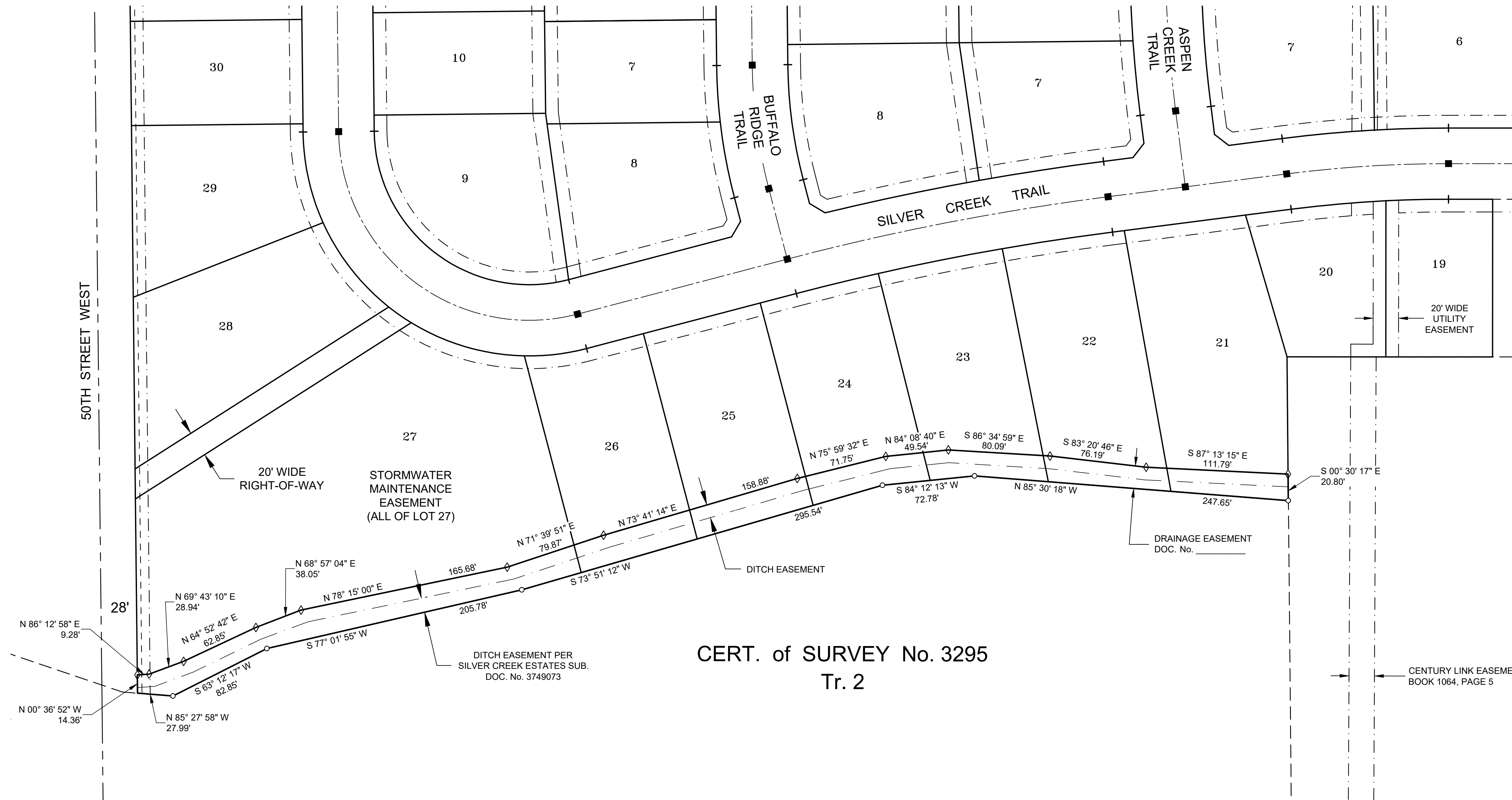
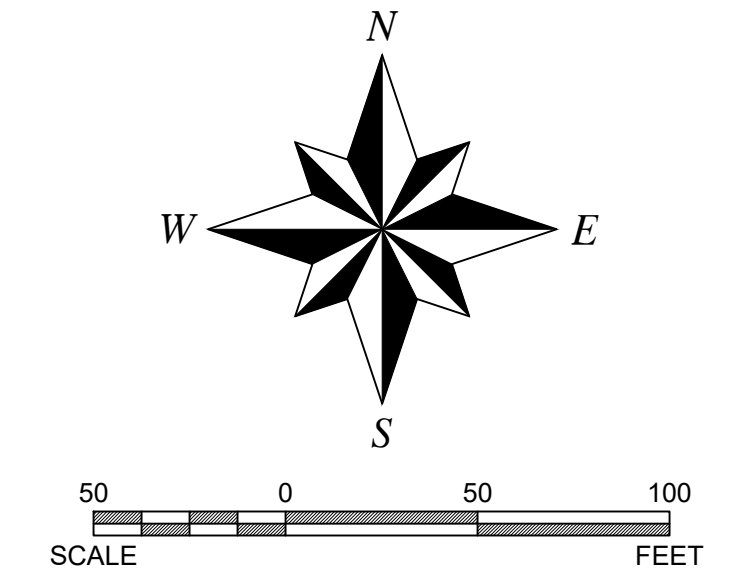


# PLAT OF SILVER CREEK ESTATES, SECOND FILING

BEING LOT 1A, BLOCK 3, SILVER CREEK ESTATES, SECOND AMENDMENT  
 LOCATED IN THE NORTHEAST 1/4 OF SECTION 32, TOWNSHIP 1 NORTH, RANGE 25 EAST, P.M.M.  
 CITY OF BILLINGS, YELLOWSTONE COUNTY, MONTANA  
 PREPARED FOR : BOYER LAND, LLC  
 MAY, 2019



- LEGEND**
- = FOUND 1/4 CORNER
  - = FOUND CENTER 1/4 CORNER
  - = FOUND SURVEY CAPPED REBAR MONUMENT MARKED 15626 LS, OR AS NOTED
  - = SET INTERSECTION MONUMENT, 5/8"x18" REBAR WITH CAP MARKED WITH THE LICENSE NUMBER OF THE UNDERSIGNED LAND SURVEYOR AND "KLJ". WILL BE REPLACED WITH BRASS CAP MONUMENT BOX UPON COMPLETION OF STREET IMPROVEMENTS.
  - = SET 5/8" X 18" REBAR AND CAP MARKED WITH THE LICENSE NUMBER OF THE UNDERSIGNED LAND SURVEYOR AND "KLJ", UNLESS OTHERWISE NOTED
  - = COMPUTED POSITION NO MONUMENT SET

**BASIS OF BEARINGS:**  
 GEODETIC NORTH DETERMINED AT THE SOUTHWEST CORNER OF SECTION 32, T. 1 N., R. 25 E., P.M.M. WHICH IS A 2-1/2 INCH BRASS CAP IN A MONUMENT BOX AT THE INTERSECTION OF GRAND AVENUE AND 54TH STREET WEST AND IS LOCATED AT LATITUDE 45°47'02.6796"N, LONGITUDE 108°39'09.64736"W, NAD83(2011) (EPOCH 2010.0000).  
 BEARINGS SHOWN ARE GRID BEARINGS AND HAVE NOT BEEN ADJUSTED FOR CONVERGENCE.  
 DISTANCES SHOWN ARE GROUND DISTANCES.