

PLAT OF WESTERN SKY SUBDIVISION, 2ND AMENDED

BEING LOTS 3 & 4, BLOCK 1, WESTERN SKY SUBDIVISION
SITUATED IN THE NW1/4 OF SECTION 15, T. 1 S., R. 25 E., P.M.M.,
IN THE CITY OF BILLINGS, YELLOWSTONE COUNTY, MONTANA

PREPARED FOR : MONT VISTA, LLC

JULY, 2019

PREPARED BY : SANDERSON STEWART



BILLINGS, MONTANA

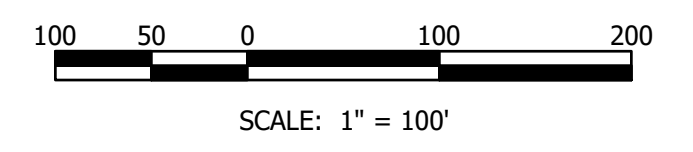
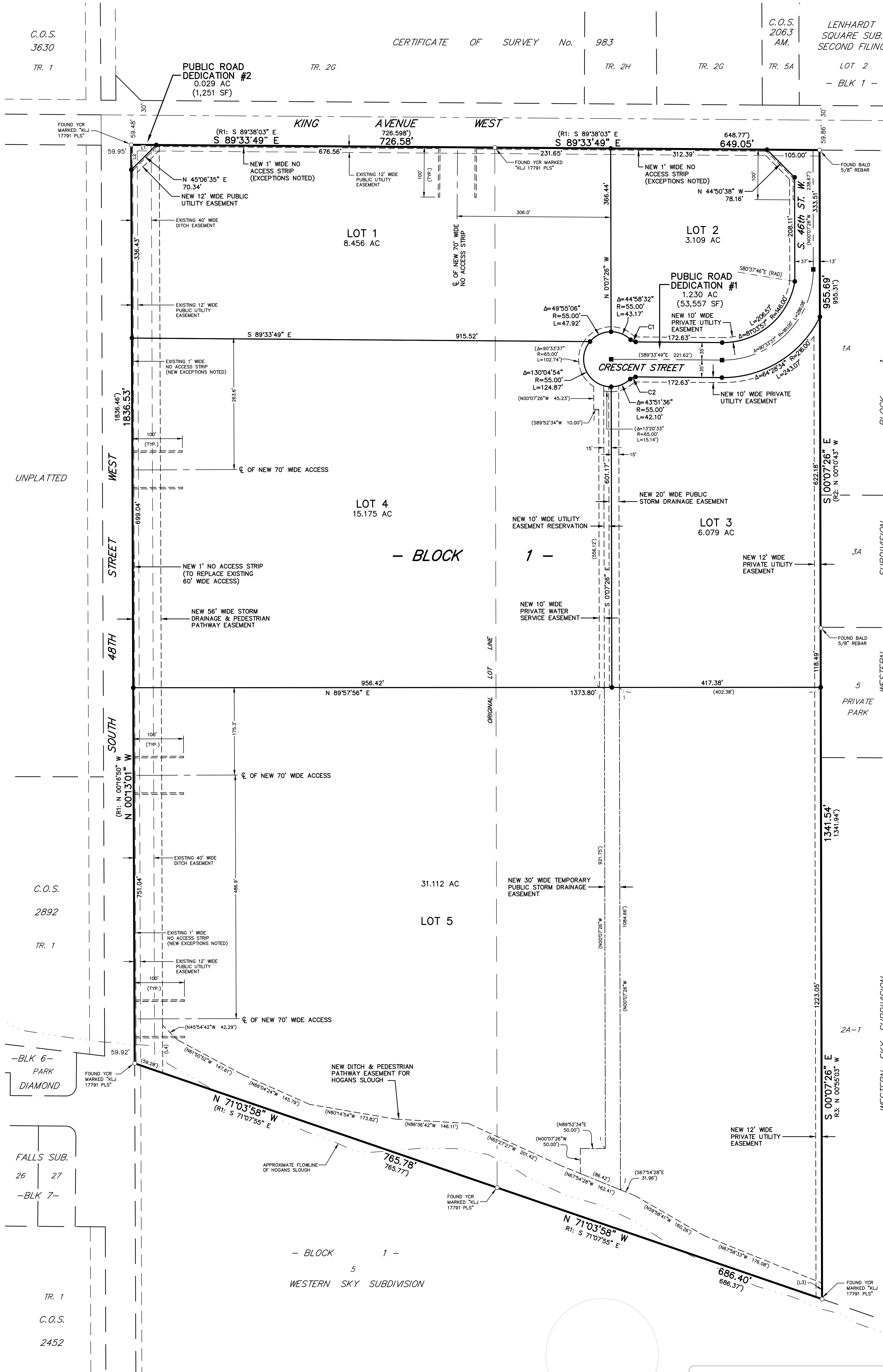
BASIS OF BEARING: THE BASIS OF BEARINGS FOR THIS SURVEY HAS BEEN DERIVED FROM GPS OBSERVATIONS AND IS BASED ON A NAD 83, LAMBERT CONFORMAL CONIC, SINGLE PARALLEL, LOW DISTORTION PROJECTION FOR THE CITY OF BILLINGS; HAVING A POINT OF ORIGIN AT 45°47'00"N LATITUDE AND 108°25'00"W LONGITUDE WITH A SCALE FACTOR OF 1.0001515. THE GRID TO GROUND COMBINED SCALE FACTOR AT THE SE CORNER OF THE INTERSECTION OF KING AVE. AND 48TH ST. W., BEING A REBAR WITH YELLOW CAP MARKED "KLJ 17791 PLS", IS 0.9999982336; THE CONVERGENCE ANGLE IS -0°09'31". DISTANCES ARE INTERNATIONAL FEET. FOR THIS SURVEY, GRID DISTANCE IS ESSENTIALLY EQUAL TO GROUND DISTANCE.

- FOUND SURVEY MONUMENT, AS NOTED
- SET 5/8" X 18" REBAR WITH CAP MARKED WITH THE LICENSE NUMBER OF THE UNDERSIGNED LAND SURVEYOR AND "SANDERSON STEWART"
- SET INTERSECTION MONUMENT, 5/8"x18" REBAR WITH CAP MARKED WITH THE LICENSE NUMBER OF THE UNDERSIGNED LAND SURVEYOR AND "SANDERSON STEWART BILLINGS MT". WILL BE REPLACED WITH BRASS CAP MONUMENT BOX UPON COMPLETION OF STREET IMPROVEMENTS.

NOTE: ALL CURVES ARE TANGENT AND ALL PROPERTY LINES INTERSECTING CURVES ARE RADIAL UNLESS OTHERWISE NOTED (X'X'X' RAD).

RECORD:

- R1: PLAT OF WESTERN SKY SUBDIVISION, DOCUMENT No. 3374355
- R2: PLAT OF WESTERN SUBDIVISION, DOCUMENT No. 3659541
- R3: AMENDED PLAT OF LOT 2A OF AMENDED PLAT OF LOTS 1 & 2, WESTERN SKY SUBDIVISION, DOCUMENT No. 3720149



Curve #	Delta	Radius	Length
C1	44°24'55"	15.00'	11.63'
C2	44°23'47"	15.00'	11.62'

Line #	Bearing	Distance
L1	N 89°33'49" W	50.02'
L2	S 00°13'01" E	50.02'
L3	N 00°07'26" W	31.99'
L4	S 00°13'01" E	95.48'

RESERVED FOR CLERK AND RECORDER