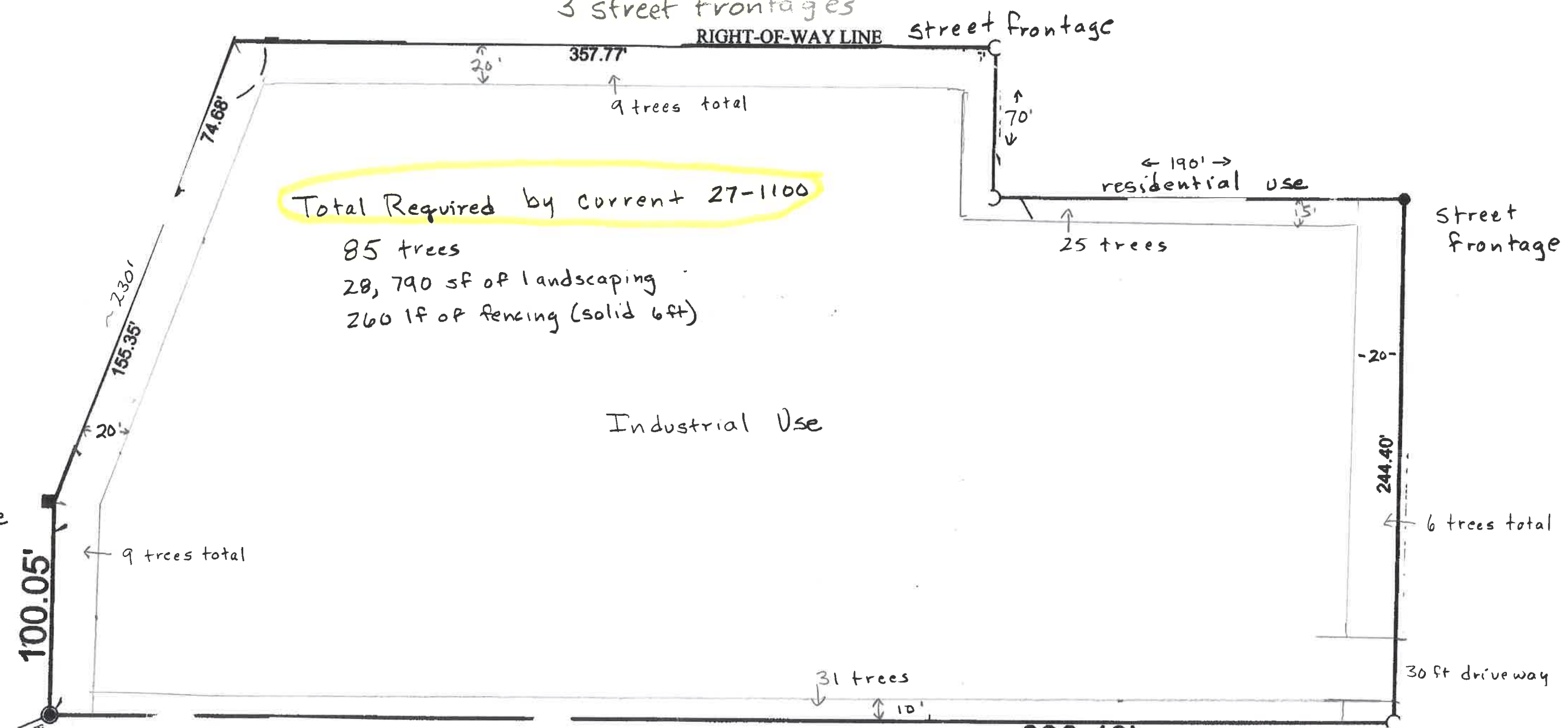


Industrial / Commercial Use
 Example: 4 acre site

Residential Adjacent
 Commercial Adjacent

Community Commercial zone

3 street frontages



Total Required by current 27-1100
 85 trees
 28,790 SF of landscaping
 260 LF of fencing (solid 6ft)

Industrial Use

- Existing LIS code at 27-1100 requires:
- On each street frontage: (Option 1 - 27-1105.b.1)
 20 ft wide buffer yard with 1 tree per 40 ft. (excluding driveways)
 24 trees + ~ 18,100 SF of frontage landscaping
 - At property line with Residential Use: (D-Industrial to(R) 27-1105.b.2)
 D - 15 ft wide with 4 trees every 40 ft.
 6ft sight obscuring fence - no chainlink allowed
 25 trees + ~ 3,900 SF of perimeter landscaping + 260 linear feet of solid fencing (@ \$35/ft)
 - At property line with Commercial Use: (B-Industrial to(Comm) 27-1105.b.2)
 B - 10 ft wide with 2 trees every 40 ft
 31 trees + ~ 6,100 SF of perimeter landscaping

Zoning = Community Commercial

Area = 4.05 acres
 176,418 SF

Parking Lot = 50 spaces
 27-1106 requires
 5 trees + 690 SF of landscaping