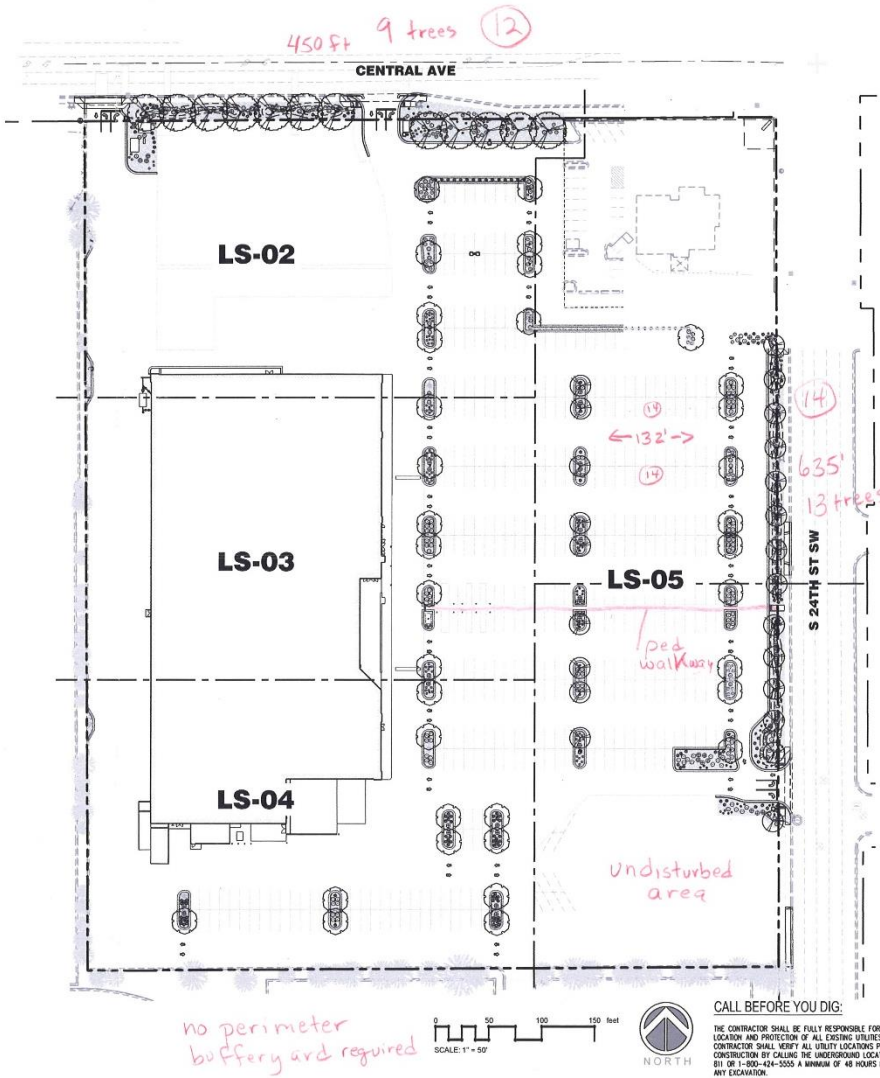


**PLANT SCHEDULE (ALL SHEETS)**

TREES	QTY	BOTANICAL NAME	CAL.	DESC.
	12	ACER X FREEMANI 'SIENNA' SIENNA GLEN MAPLE	2.5' GAL.	10-12' HT. B4B
	95	GLEDITSIA TRIACANTHOS 'IMPERIAL' 'IMPERIAL' HONEYLOCUST	2.5' GAL.	10-12' HT. B4B
	23	TILIA AMERICANA 'REDMOND' 'REDMOND' LINDEN	2.5' GAL.	10-12' HT. B4B
SHRUBS	QTY	BOTANICAL NAME	SIZE	SPACING
	86	CARAGANA ARBORESCENS 'GLOBOSA' 'GLOBE' PEASHRUB	1 GAL	AS SHOWN
	163	HELICOTRICHON SEMPERVIRENS BLUE OAT GRASS	1 GAL	AS SHOWN
	62	JUNIPERUS SABINA 'CALGARY CARPET' 'CALGARY CARPET' JUNIPER	1 GAL	AS SHOWN
	156	PHYSCARRUS OPALIFOLIUS 'LITTLE DEVIL' 'LITTLE DEVIL' NINEBARK	5 GAL	AS SHOWN
	85	PINUS MISO 'SLOMOUND' MISO FINE	5 GAL	AS SHOWN
	150	POTENTILLA FRUTICOSA 'PINK BEAUTY' 'PINK BEAUTY' CINQUEFOIL	1 GAL	AS SHOWN
	80	RIBES ALPINUM 'GREEN MOUND' 'GREEN MOUND' CURRANT	5 GAL	AS SHOWN

**LANDSCAPE SHEET NOTES**

- THE LANDSCAPE ARCHITECTURAL SITE PLAN IS TO BE USED IN CONJUNCTION WITH THE CIVIL, IRRIGATION, MECHANICAL, ELECTRICAL, AND ARCHITECTURAL SITE PLANS TO FORM COMPLETE INFORMATION REGARDING THE SITE.
- THE INFORMATION ON THIS SHEET IS INCOMPLETE UNLESS ACCOMPANIED BY THE CORRESPONDING SPECIFICATION SECTIONS DEVELOPED FOR THIS PROJECT. REFER TO SPECIFICATIONS FOR ADDITIONAL INFORMATION.
- LANDSCAPE CONSTRUCTION SHALL CONFORM TO ALL APPLICABLE STATE AND LOCAL CODES AND SPECIFICATIONS.
- ALL MATERIAL AND WORKMANSHIP SHALL BE MAINTAINED AND GUARANTEED FOR A PERIOD OF 12 MONTHS FOLLOWING THE SUBSTANTIAL COMPLETION DATE.
- LANDSCAPE CONTRACTOR SHALL EXAMINE THE SITE CONDITIONS UNDER WHICH THE WORK IS TO BE PERFORMED, NOTIFY THE GENERAL CONTRACTOR IN WRITING OF UNSATISFACTORY CONDITIONS. DO NOT PROCEED UNTIL CONDITIONS HAVE BEEN CORRECTED.
- BEFORE COMMENCING WORK, LANDSCAPE CONTRACTOR SHALL CONTACT APPROPRIATE UTILITY COMPANIES FOR UTILITY LOCATIONS, AND COORDINATE WITH GENERAL CONTRACTOR IN REGARD TO LOCATION OF PROPOSED UTILITIES, INSULATION SLEEVES, CONDUITS, ETC.
- VERIFY THAT SUBGRADE PREPARATION HAS BEEN COMPLETED TO ACCEPTABLE TOLERANCES PRIOR TO BEGINNING ANY WORK.
- ALL TREE AND SHRUB LOCATIONS ARE TO BE STAKED ON SITE FOR APPROVAL BY OWNER'S REPRESENTATIVE PRIOR TO INSTALLATION.
- 2" MIN. DEPTH ROOT BARRIER SHALL BE INSTALLED ON ALL TREES WITHIN 6' OF A CURB OR SIDEWALK.
- ALL B4B PLANT MATERIAL SHALL HAVE ALL WIRE, TYNE, OR OTHER CONTAINMENT MATERIAL EXCEPT FOR 100% HEMP BURLAP REMOVED FROM THE TRUNK AND ROOT BALL OF THE PLANT PRIOR TO PLANTING. REMOVE THE TOP 2/3 OF THE HEMP BURLAP AFTER PLACING PLANT IN THE PIT.
- DISTRIBUTE IMPORTED SANDY LOAM TOPSOIL (APPROVED BY THE LANDSCAPE ARCHITECT) IN AREAS SHOWN AND AT DEPTHS INDICATED FOR CROWNS AND BERMS OF LANDSCAPE AREAS. DOTTED LINES INDICATE 1' CONTIGUOUS INTERVALS.
- PLANTING SOIL:
  - SPREADING OF PLANTING SOIL SHALL BE COMPLETED BY THE LANDSCAPE CONTRACTOR AND SUPERVISED BY THE GENERAL CONTRACTOR SO THAT GRADES ARE MET AS NOTED ON THE GRADING PLANS.
  - TOPSOIL SHALL BE PLACED IN ALL LANDSCAPE PLANTERS TO A DEPTH OF TWO (2) FEET. PLACE FINAL TOPSOIL GRADE TO WITHIN SIX (6) INCHES OF TOP OF ADJACENT CURBS TO ACHIEVE REQUIRED ROCK MULCH FINISH LEVEL.
  - PREPARATION OF BACKFILL FOR TREES, SHRUBS AND GROUNDCOVERS SHALL CONSIST OF 25% HIGH QUALITY COMPOST AND 75% PLANTING SOIL (OR IMPORTED SOIL AS ABOVE).
  - ALL CONSTRUCTION DEBRIS, ASPHALT, GRAVEL, AND OTHER DELETERIOUS MATERIALS SHALL BE REMOVED IN PARKING ISLANDS AND PLANTERS DOWN TO NATIVE SUBGRADE, AND BACKFILLED WITH APPROVED NATIVE OR IMPORTED TOPSOIL. IF SITE IS CONSTRUCTED OF IMPORTED PIT RUN OR FREE DRAINING SIMILAR NON-NATIVE MATERIAL, SPECIFY THREE FEET MINIMUM DEPTH OF IMPORT SOIL IN PARKING ISLANDS AND TWO (2) FEET MINIMUM DEPTH IN SHRUB BEDS.
- ALL PLANTING AREAS SHOWN ON PLANS SHALL BE MULCHED WITH A 4" DEPTH OF 1-1/2" NORTH HILLS GOLD LANDSCAPE ROCK OR APPROVED EQUAL. PLACE ROCK MULCH THROUGHOUT ENTIRE LANDSCAPE AREA TO A DEPTH OF 4 INCHES.
- PLANT SYMBOLS SHALL DICTATE COUNT.
- REFER TO PROJECT SPECIFICATIONS FOR MORE DETAILED INSTRUCTIONS.



no perimeter  
bufferly and required

CALL BEFORE YOU DIG:

THE CONTRACTOR SHALL BE FULLY RESPONSIBLE FOR THE LOCATION AND PROTECTION OF ALL EXISTING UTILITIES. THE CONTRACTOR SHALL VERIFY ALL UTILITY LOCATIONS PRIOR TO CONSTRUCTION BY CALLING THE UNDERGROUND LOCATE LINE 811 OR 1-800-424-5555 A MINIMUM OF 48 HOURS PRIOR TO ANY EXCAVATION.

REVISIONS	
NO. 1	DATE
NO. 2	DATE
NO. 3	DATE
NO. 4	DATE
NO. 5	DATE
NO. 6	DATE
NO. 7	DATE
NO. 8	DATE
NO. 9	DATE
NO. 10	DATE
<b>SCJ ALLIANCE</b> COMMERCIAL SERVICES 1075 N. 10TH ST. SUITE 100 BILLINGS, MONTANA 59102-1000 (406) 251-1111	
WINCO FOODS STORE NO. 155 2424 CENTRAL AVENUE BILLINGS, MONTANA	
<b>WinCo Foods</b>	
SHEET TITLE OVERALL LANDSCAPE PLAN	
SHEET LS-01	

Winco Foods 2424 Central – Redevelopment Landscape Plan – Meets or exceeds proposed new County LS code