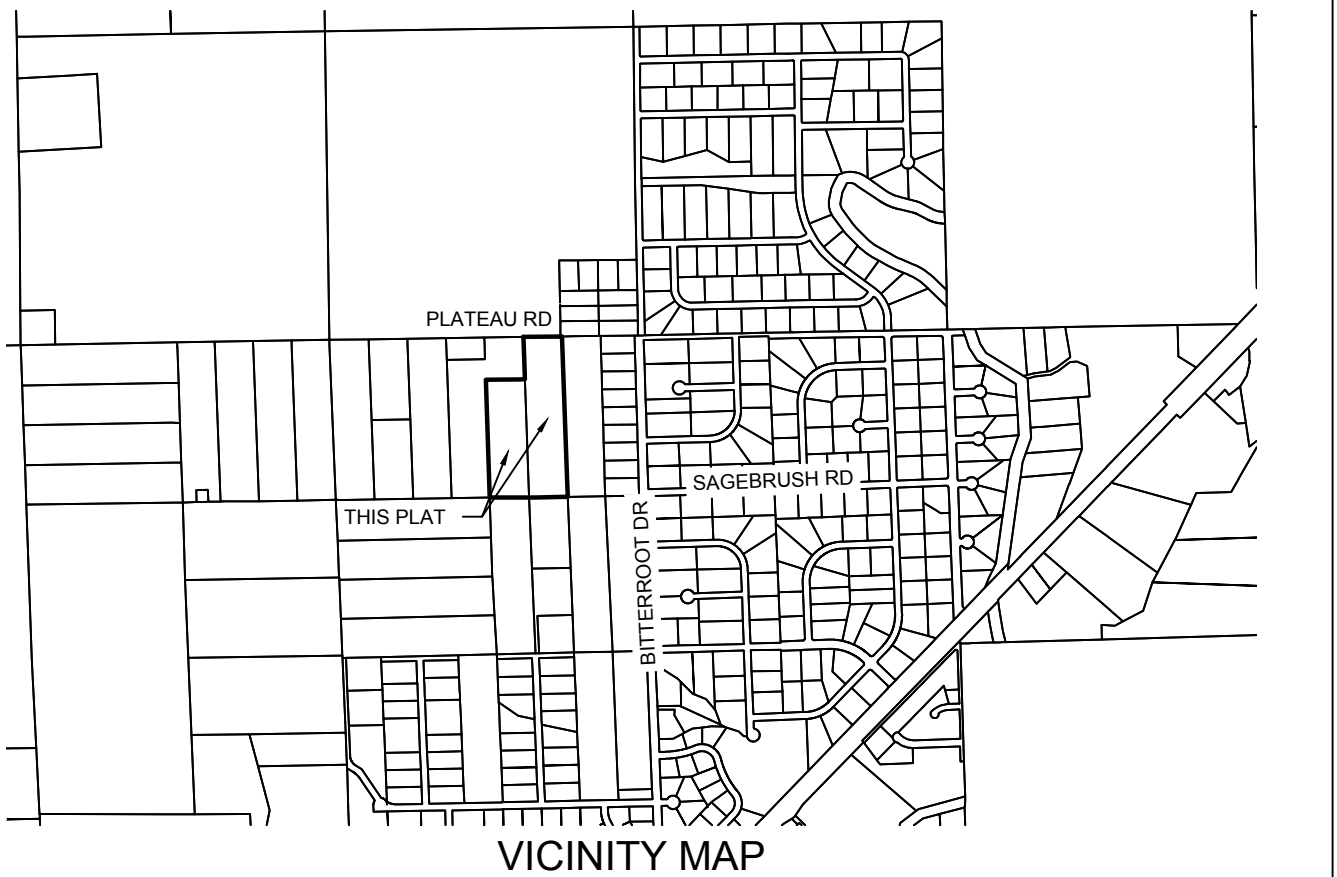
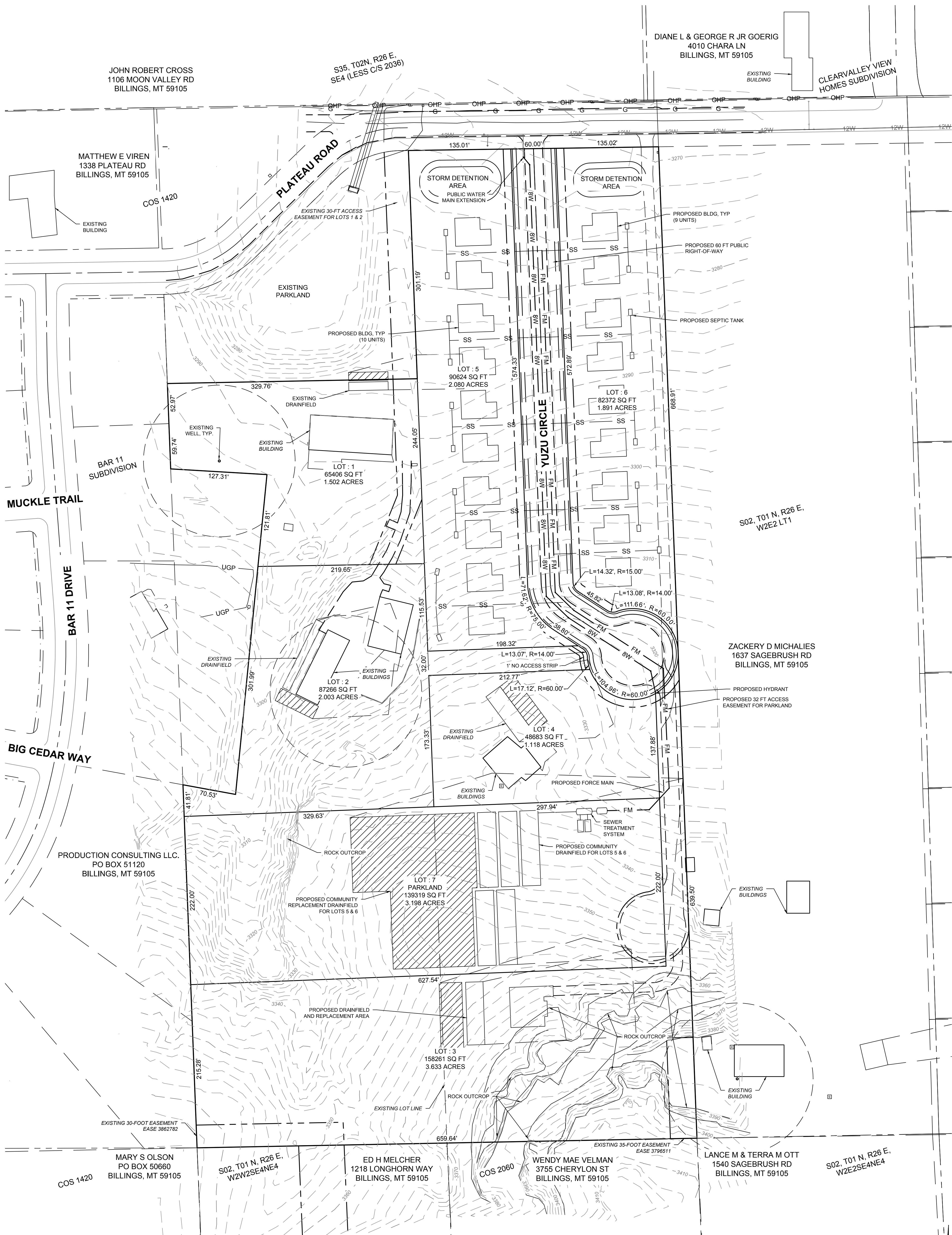


PRELIMINARY PLAT OF
BAR ELEVEN ESTATES SUBDIVISION
 BEING LOCATED IN THE NE 1/4 OF THE NE 1/4 OF SECTION 2, TOWNSHIP 01 NORTH,
 RANGE 26 EAST, P.M.M., YELLOWSTONE COUNTY, MONTANA



EXISTING LAND USE: RESIDENTIAL
 EXISTING ZONING: RESIDENTIAL (R96)
 PROPOSED LAND USE: RESIDENTIAL
 PROPERTY OWNER: PRODUCTION CONSULTING, LLC.

7100 COMMERCIAL AVE., SUITE 4
 BILLINGS, MT 59101
 OFFICE - 406-384-0080
 www.performance-ec.com

PERFORMANCE ENGINEERING

DRAWN BY: TFC CHECKED BY: CPD DATE: FEBRUARY 2019

SHEET
1 OF 1
 1" = 60'
 COPYRIGHT 2018 ©

C:\Users\TCallahan\Dropbox (PEC Billings)\PEC Billings Team\Folden\Production Consulting, LLC\2017-07-18 Bar 11 Estates\CAD\DWG\Plats\17-0718 Prelim Plat.dwg
 3/19/2019 1:09:58 PM PEC STANDARD DWG.CTB