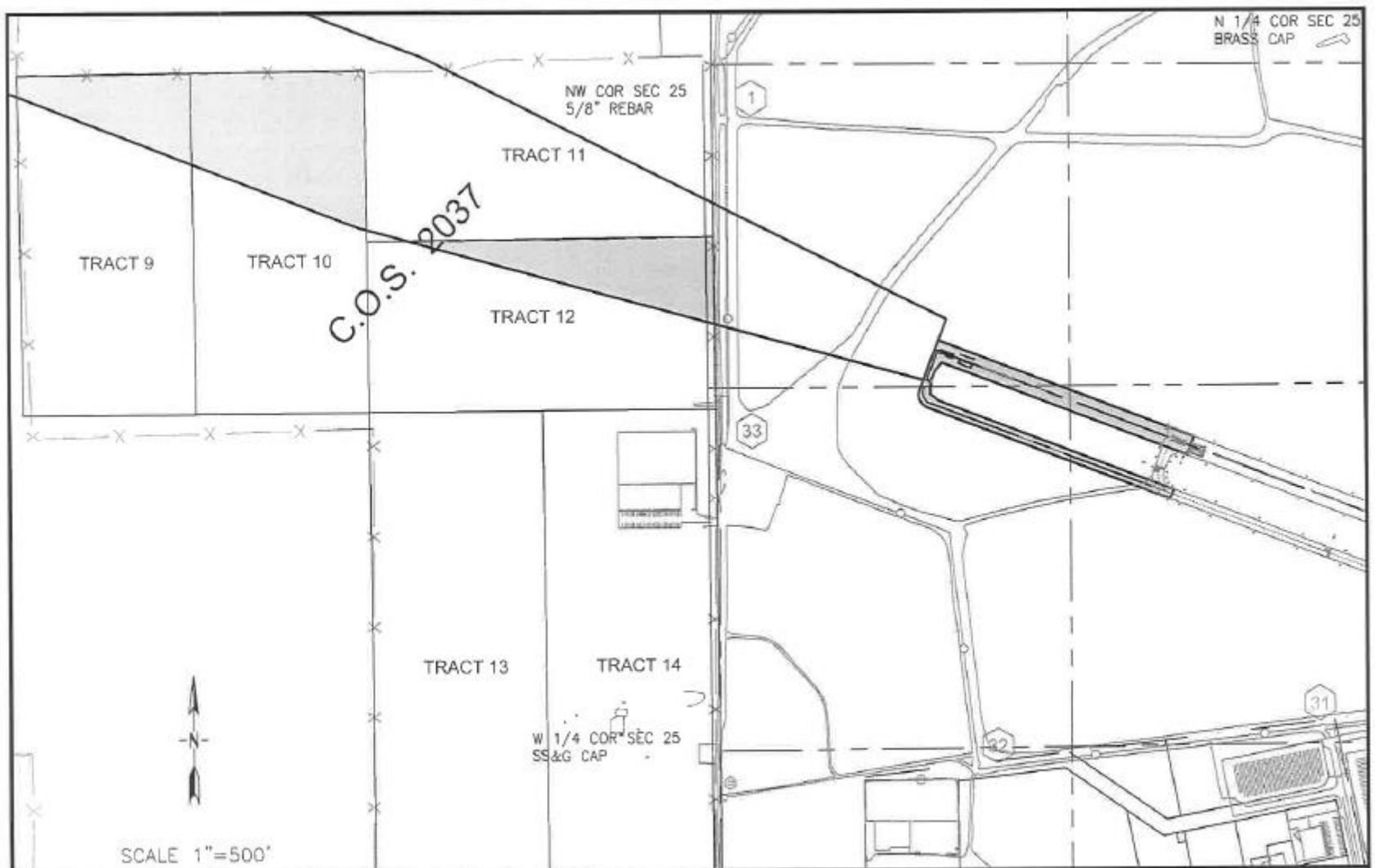




Airport Land Purchase

April 2020





N 1/4 COR SEC 25
BRASS CAP

NW COR SEC 25
5/8" REBAR

C.O.S. 2037

TRACT 9

TRACT 10

TRACT 11

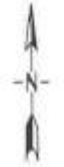
TRACT 12


TRACT 13

TRACT 14

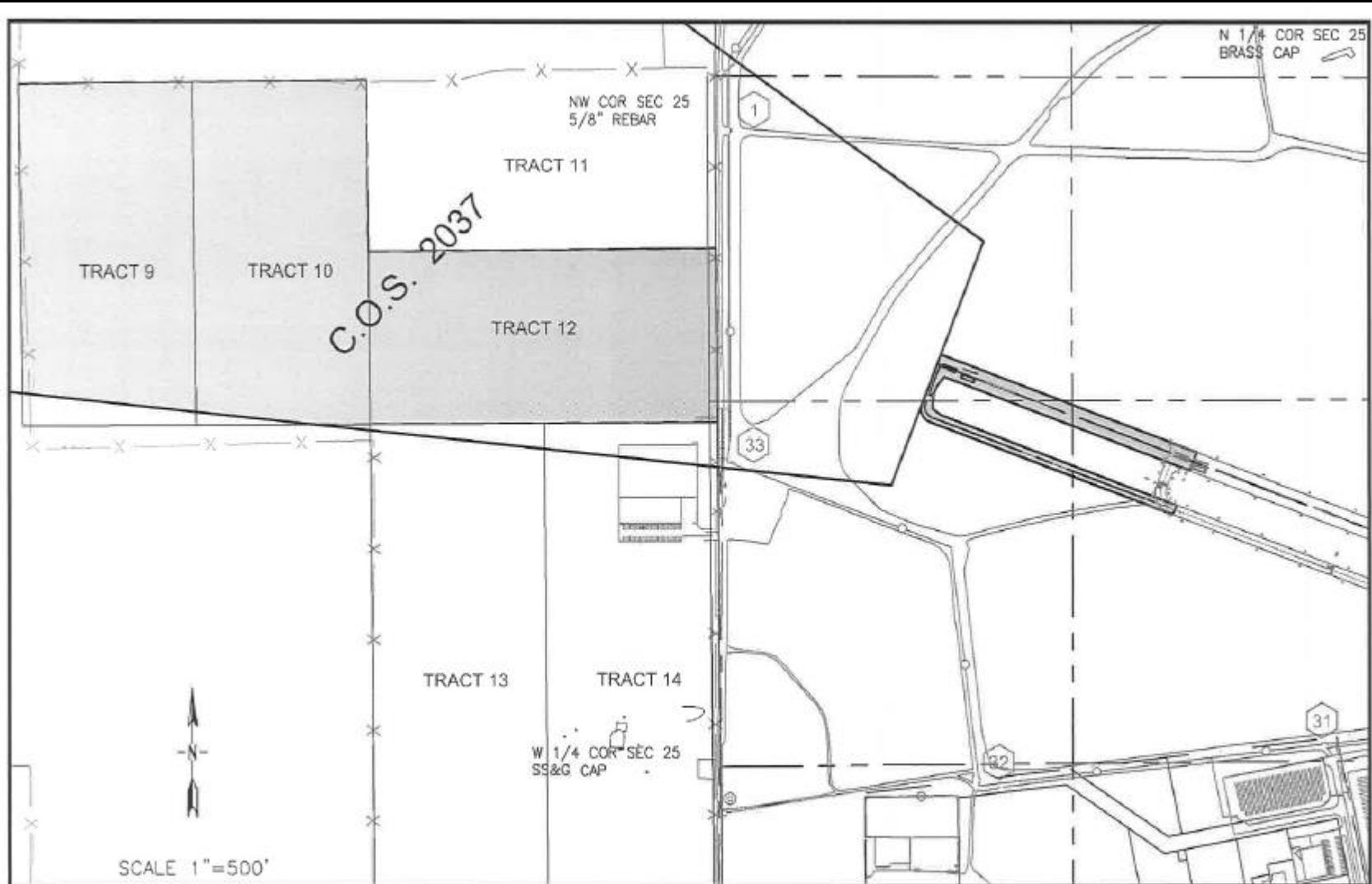
W 1/4 COR SEC 25
SS&G CAP


SCALE 1"=500'



 <p>Morrison Maierle engineers • surveyors • planners • scientists</p> <p>316 N. 20th Street, Suite 102 Billings, MT 59101 Phone: 406.655.6000 Fax: 406.237.1201 ©2017 Morrison Maierle & Partners, Inc. All rights reserved.</p>	<p>DRAWN BY: <u> </u></p> <p>DESIGN BY: <u> </u></p> <p>APPROV BY: <u> </u></p> <p>DATE: <u> </u></p>	<p>EXHIBIT A AVIATION AND TRANSIT DEPARTMENT - CITY OF BILLINGS MONTANA</p>	<p>PROJECT NO. 2447.114</p>
	<p>BILLINGS</p> <p>APPROACH SURFACE EASEMENT FOR TRACTS 9, 10 AND 12, C.O.S. 2037</p>		<p>FIGURE NUMBER 1 of 2</p>

J:\2447.114 - 102204CAD\B\102204CAD-APP\102204CAD-APP\102204CAD-APP.dwg Plotted by kkuhn on Apr 19, 2017



 <p>Morrison Maierle engineers - architects - planners - scientists</p>	<p>315 N. 25th Street, Suite 102 Billings, MT 59101</p> <p>Phone: 406.655.8660 Fax: 406.237.1201</p> <p><small>COPYRIGHT © 2008 MORRISON MAIERLE, INC. 0011</small></p>	<p>DRAWN BY: <u>JDG</u></p> <p>DESIGN BY: <u>JHE</u></p> <p>APPR. BY: <u>JHE</u></p> <p>DATE: <u>3/2017</u></p>	<p>BILLINGS</p>		<p>EXHIBIT A AVIATION AND TRANSIT DEPARTMENT - CITY OF BILLINGS</p>		<p>MONTANA</p>		<p>PROJECT NO. 2447.114</p>
			<p>DEPARTURE SURFACE EASEMENT FOR TRACTS 9, 10 AND 12, C.O.S. 2037</p>			<p>FIGURE NUMBER 1 of 2</p>			

212427114 - 10001.ACAD\Fairhold\DEPARTURE-EASEMENT.dwg Plotted by Maierle on April 13, 2017